

# Victoria Mills Studios

Stratford • London • E15 2SW  
Per Week: £650 Per Week



coopers  
est 1986

# Victoria Mills Studios

Stratford • London • E15 2SW

Rare to the market, a stunning two double bedroom penthouse apartment with a fabulous wrap around roof terrace.

The spectacular lounge is flooded with natural light and features generous entertaining space, floor to ceiling windows and patio doors leading out to the west facing roof terrace. At approximately 1000sq ft, the terrace offers a fantastic opportunity to create a unique outside space.

A fully integrated kitchen is semi-open plan and the remainder of the property comprises: Large master bedroom with direct access onto the roof terrace, built in wardrobes and en-suite shower room; second double bedroom, family bathroom and entrance hallway.

The apartment benefits from plenty of built in storage throughout and comes with a secure underground car parking space.

Victoria Mills Studios is fantastically positioned to benefit from all that Stratford provides, including a host of transport facilities, Westfield Shopping Centre and the Olympic Park.

Available July

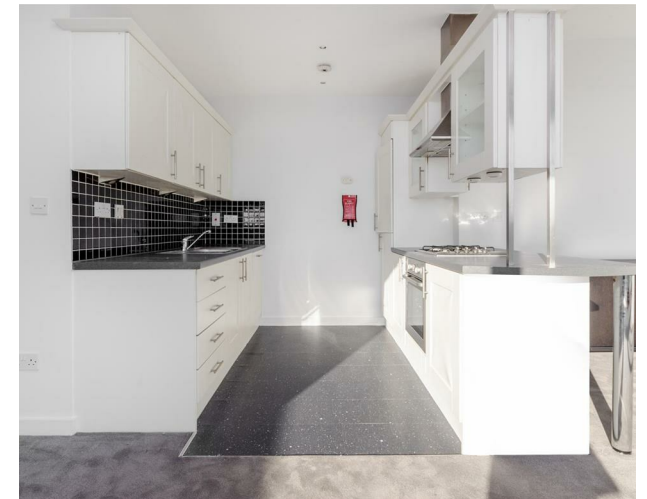
Penthouse

Two bed

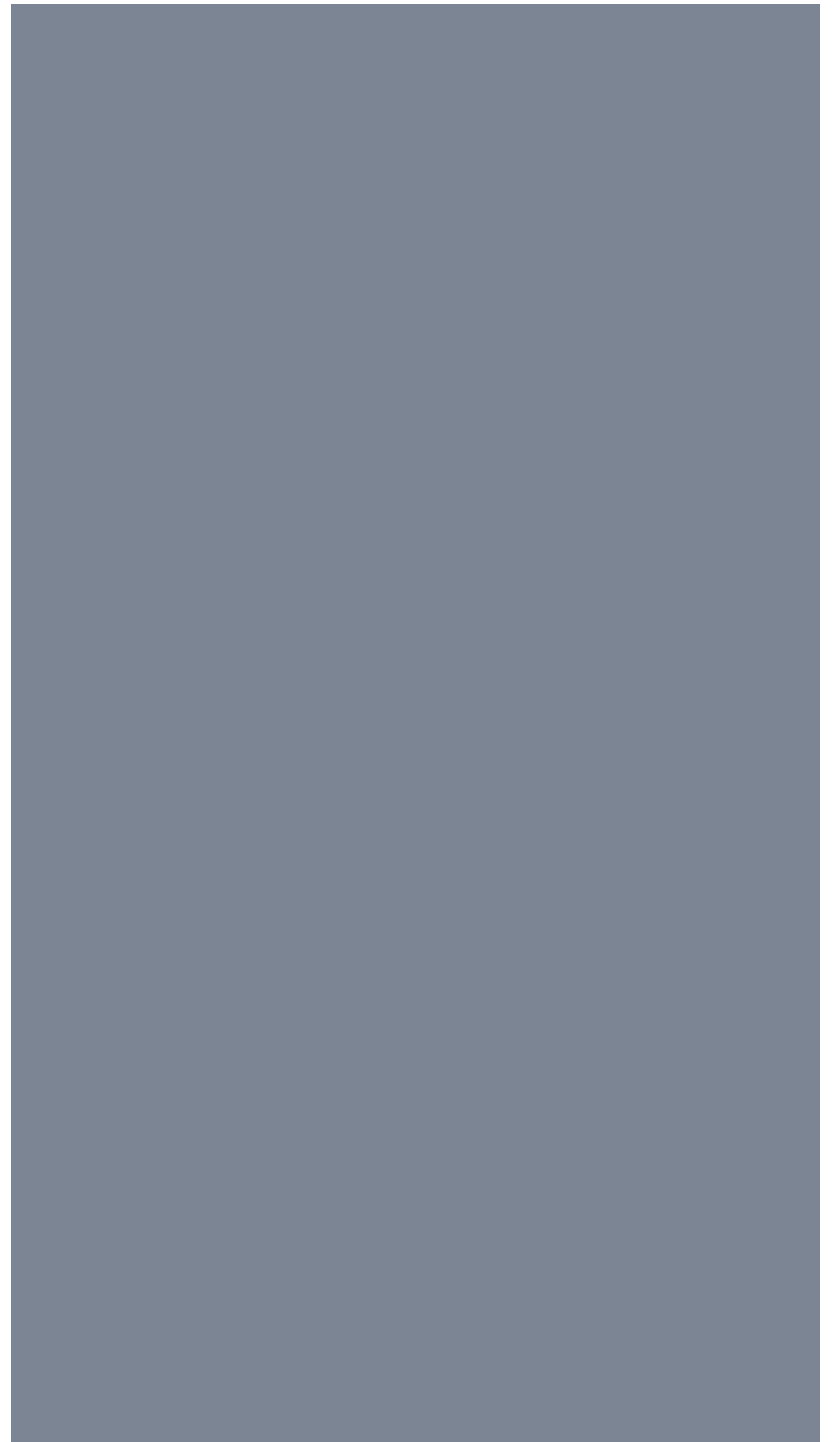
Two bath

Close to Westfield Shopping Centre

These particulars are intended as a guide and must not be relied upon as statements of fact. Your attention is drawn to the Important Notice on the last page.









Schools:



Train:



Car:

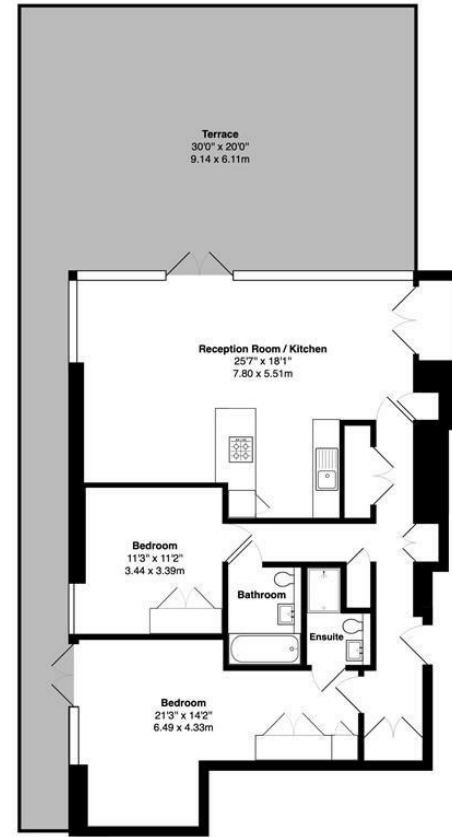
M4, A40, M25, M40



Council Tax Band:

E

(Distances are straight line measurements from centre of postcode)



6th Floor

Burford Road E15

Total Gross Area: 1005 ft² ... 93.4 m² (excluding terrace)
Floor plans are for identification and guideline purposes only, not to scale
Compliant RICS code of measuring practice



0207 580 9658
22 Cleveland Street, Fitzrovia, London, W1T 4JB
info@coopersonlondon.co.uk

CoopersResidential.co.uk

Energy Efficiency Rating table with columns for Current, Target, and Energy class (A-G).

Important Notice: These particulars, whilst believed to be accurate are set out as a general outline only for guidance and do not constitute any part of an offer or contract.