

Lambert House

London • • EC4M 7AS
Per Month: £2,200 Per Month



coopers
est 1986

Lambert House

London • • EC4M 7AS

A one bedroom apartment arranged on the 1st floor of an impressive building located in the heart of the City. Features include a bright living room with high ceilings, a semi open plan kitchen and a double bedroom.

One bedroom apartment

1st Floor (with lift)

Wood Flooring

High Ceilings

Excellent transport links

These particulars are intended as a guide and must not be relied upon as statements of fact. Your attention is drawn to the Important Notice on the last page.







Schools:

A one bedroom apartment arranged on the 1st floor of an impressive building located in the heart of the City. Features include a bright living room with high ceilings, a semi open plan kitchen and a double bedroom.



Train:



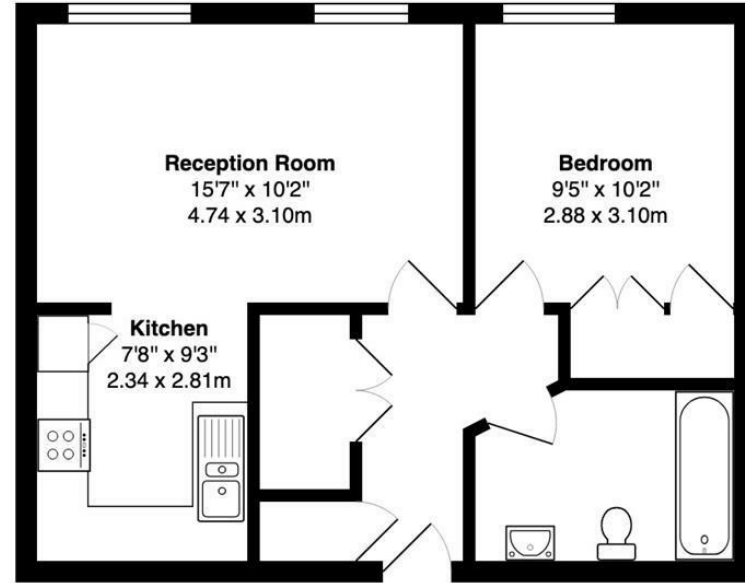
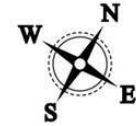
Car:

M4, A40, M25, M40



Council Tax Band:

(Distances are straight line measurements from centre of postcode)



1st floor

Lambert House, Ludgate Square EC4M

Total Gross Area: 499 ft² ... 46.4 m²

All measurements are approximate and for identification guideline purposes only, not to scale. Compliant with the RICS code of measuring practice

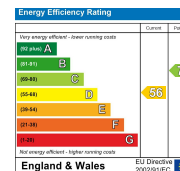
0207 580 9658

22 Cleveland Street, Fitzrovia,
London, W1T 4JB

info@coopersonlondon.co.uk

CoopersResidential.co.uk

coopersonlondon
est 1986



Important Notice: These particulars, whilst believed to be accurate are set out as a general outline only for guidance and do not constitute any part of an offer or contract. Intending purchasers should not rely on them as statements or representation of fact, but must satisfy themselves by inspection or otherwise has the authority to make or give any representation or warranty in respect of the property.