

# Crown Court

London • • WC2B 5EX  
Per Month: £3,000 Per Month



coopers  
est 1986

# Crown Court

London • • WC2B 5EX

Located in the heart of Covent Garden, this very large one bedroom apartment is on the first floor of a sought after, residential development.

Charter House is located on the pedestrianised Crown Court in between Bow Street and Drury Lane. The flat comprises of a charming living/dining room, separate kitchen, good size bedroom and large bathroom.

The flat is on the first floor and is light and bright. The building has a week day porter and lift access.

Crown Court is moments from the Royal Opera House and the Covent Garden Piazza, and within walking distance to the numerous world famous restaurants, theatres and cafes. Transport links include Covent Garden, Leicester Square and Holborn underground stations.

## Recently Refurbished

One bedroom

One bathroom

Day porter

These particulars are intended as a guide and must not be relied upon as statements of fact. Your attention is drawn to the Important Notice on the last page.







Schools:



Train:



Car:

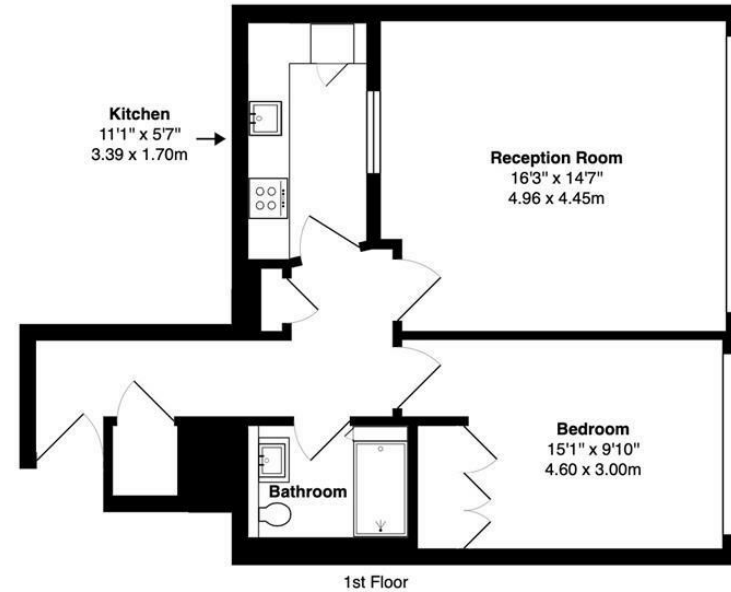
M4, A40, M25, M40



Council Tax Band:

F

(Distances are straight line measurements from centre of postcode)



Charter House WC2B

Total Gross Area: 604 ft² ... 56.2 m²

Floor plans are for identification and guideline purposes only, not to scale  
Compliant RICS code of measuring practice

0207 580 9658

22 Cleveland Street, Fitzrovia,  
London, W1T 4JB

info@coopersonlondon.co.uk

CoopersResidential.co.uk

coopersonlondon  
est 1986

Energy Efficiency Rating	
Current	Potential
79	81
Best energy efficient - lower running costs (Low energy) A (Low energy) B (Low energy) C (Low energy) D (Low energy) E (Low energy) F (Low energy) G Not energy efficient - higher running costs	
England & Wales EPC Directive 2002/91/EC	

Important Notice: These particulars, whilst believed to be accurate are set out as a general outline only for guidance and do not constitute any part of an offer or contract. Intending purchasers should not rely on them as statements or representation of fact, but must satisfy themselves by inspection or otherwise has the authority to make or give any representation or warranty in respect of the property.