

# Alexandra Grove

London • • N4 2LF  
Per Month: £2,600 Per Month



coopers  
est 1986

# Alexandra Grove

London • • N4 2LF

Two-bedroom apartment with lots of natural light and high ceilings.

This apartment has been refurbished to a high spec. Located on the Ground floor, this apartment comprises of a bright reception room, kitchen and a private garden.

Internally the flat is 694sqft. There are two generous double bedrooms and a family bathroom.

This property is in close proximity to shops and cafes, minutes walk to Stoke Newington, as well as local parks (Clissold Park, Gillespie Nature Reserve and Woodberry Wetlands).

AVAILABLE NOW

Two Bedroom

Family bathroom

Private garden

Recently Re-furnished

Great transport links

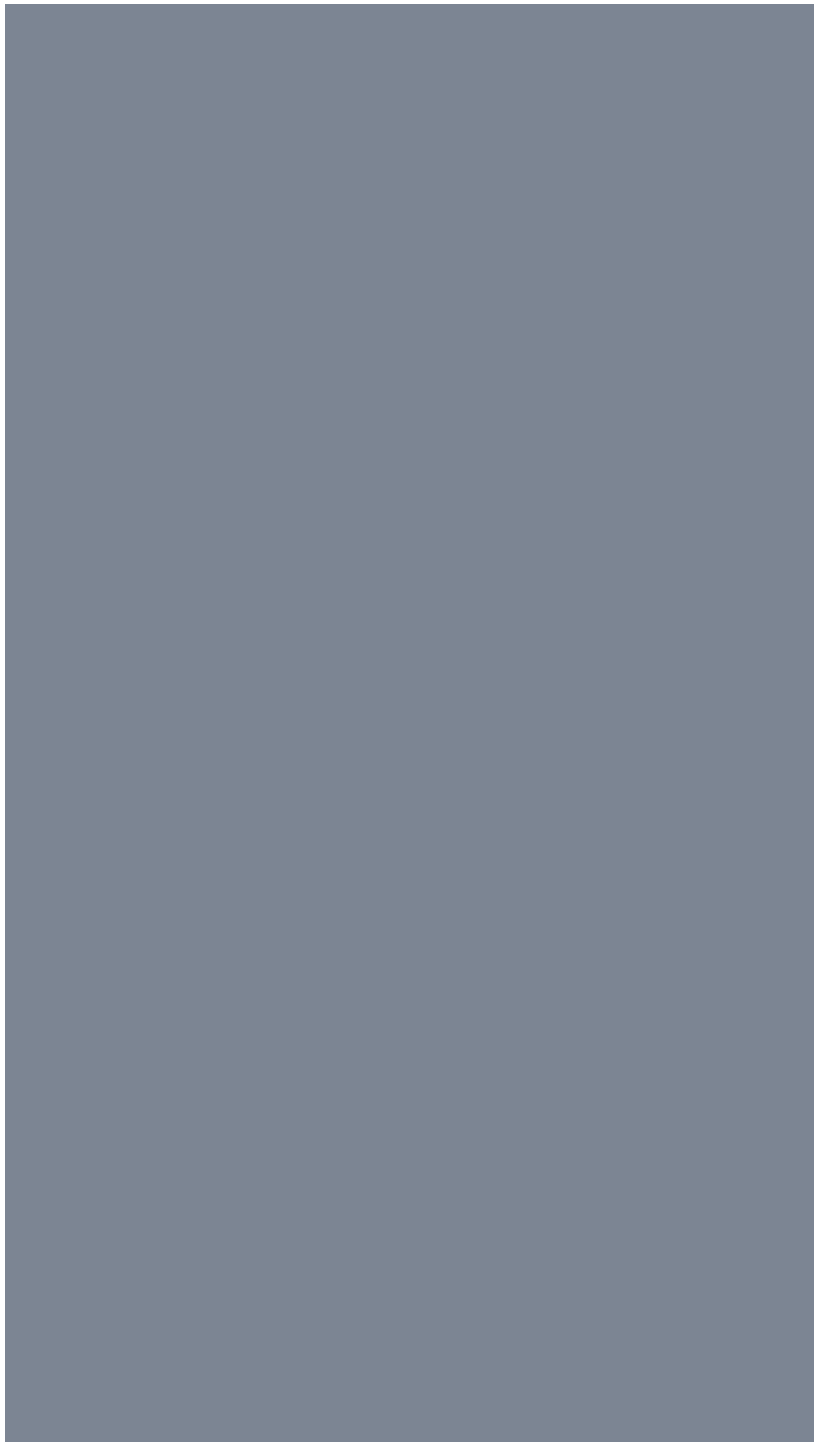
---

---

---

These particulars are intended as a guide and must not be relied upon as statements of fact. Your attention is drawn to the Important Notice on the last page.







Schools:



Train:



Car:

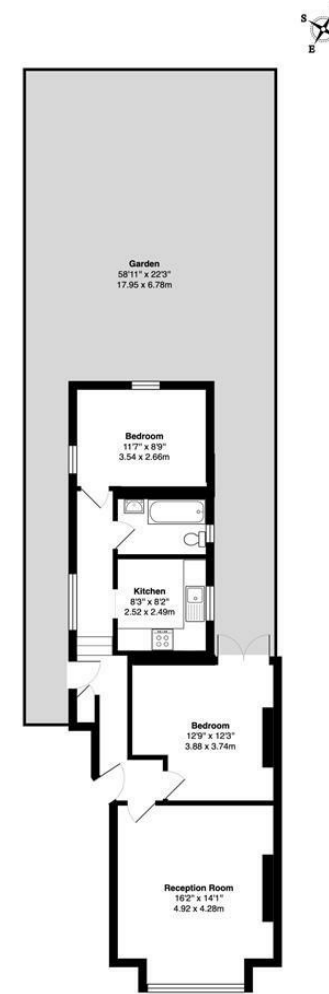
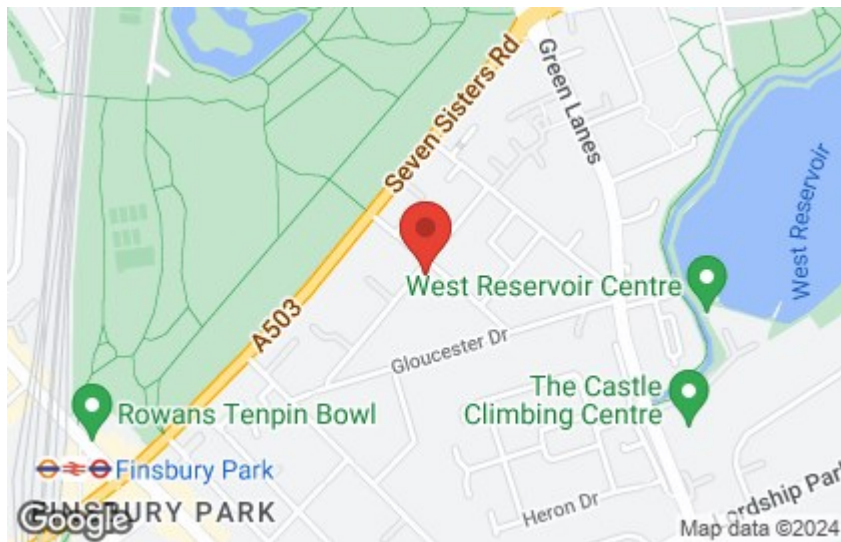
M4, A40, M25, M40



Council Tax Band:

D

(Distances are straight line measurements from centre of postcode)



Alexandra Grove, London N4

Total Gross Area: 694 ft<sup>2</sup> ... 64.4 m<sup>2</sup>

All measurements are approximate and for identification guideline purposes only; not to scale. Compliant with the RICS code of measuring practice

0207 580 9658

22 Cleveland Street, Fitzrovia,  
London, W1T 4JB

info@coopersonlondon.co.uk

CoopersResidential.co.uk

coopersonlondon  
est 1986

Energy Efficiency Rating	
Energy efficient - lower running costs	Costs
A	Low
B	Low
C	Low
D	Low
E	Low
F	Low
G	Low
Not energy efficient - higher running costs	
England & Wales	

Important Notice: These particulars, whilst believed to be accurate are set out as a general outline only for guidance and do not constitute any part of an offer or contract. Intending purchasers should not rely on them as statements or representation of fact, but must satisfy themselves by inspection or otherwise has the authority to make or give any representation or warranty in respect of the property.