

Because life is

PettyTM
Real

28 28 Green End Avenue
Earby
BB18 6NT



For Sale

- Spacious mid terrace
- Popular location
- Ideal for first time buyer or family
- 4 bedrooms
- Lounge

Offers In The Region Of £135,000

- Fully fitted dining kitchen
- Open aspect to the front
- Enclosed rear yard
- UPVC DG & GFCH
- Viewing recommended



This beautifully presented four-bedroom mid-terrace family home offers a rare blend of modern comforts and traditional charm, set in a peaceful location with a stunning outlook. The property boasts K-rendered elevations, providing a sleek and contemporary façade.

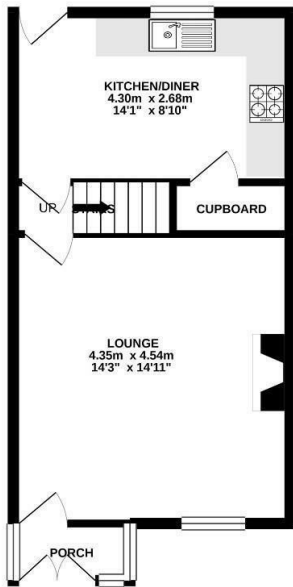
Internally, the accommodation spans three floors. The ground floor begins with an inviting entrance porch leading to a spacious lounge, highlighted by a flame gas fire that creates a cozy focal point. Toward the rear, the modern 'L' shaped dining kitchen offers ample space for family meals and includes a convenient under-stairs storage area.

The first floor hosts two bedrooms, one being a generous double at the front and a comfortable single at the rear. These are complemented by a stylish three-piece family bathroom. The second floor reveals two additional double bedrooms, both well-proportioned and filled with natural light.

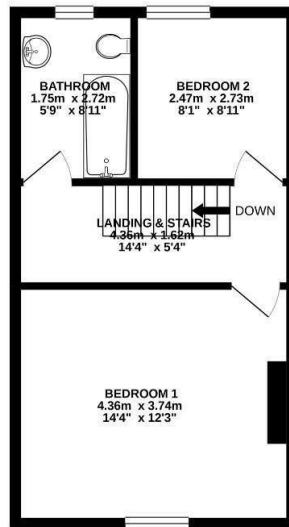
Externally, the property continues to impress. The front boasts a charming garden forecourt, while the rear offers a particularly attractive enclosed yard. Recent upgrades include new Indian stone paving, providing a sophisticated outdoor space perfect for relaxation or entertaining. The yard also features a new shed with power, adding both functionality and storage.

An internal inspection is highly recommended to truly appreciate the deceptive size and serene setting of this wonderful family home.

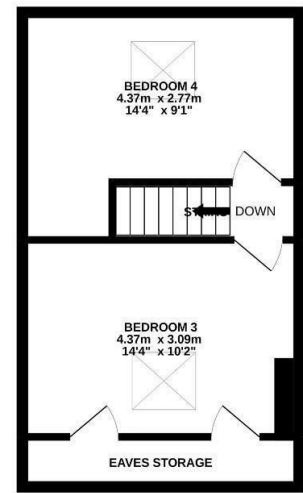
GROUND FLOOR
36.1 sq.m. (389 sq.ft.) approx.



1ST FLOOR
34.7 sq.m. (373 sq.ft.) approx.



2ND FLOOR
32.1 sq.m. (346 sq.ft.) approx.



TOTAL FLOOR AREA: 102.9 sq.m. (1108 sq.ft.) approx.

Whilst every attempt has been made to ensure the accuracy of the floorplan contained here, measurements of doors, windows, rooms and any other items are approximate and no responsibility is taken for any error, omission or mis-statement. This plan is for illustrative purposes only and should be used as such by any prospective purchaser. The services, systems and appliances shown have not been tested and no guarantee as to their operability or efficiency can be given.
Made with Metropix ©2020



These particulars, whilst believed to be accurate are set out as a general outline only for guidance and do not constitute any part of an offer or contract. Intending purchasers should not rely on them as statements of representation of fact, but must satisfy themselves by inspection or otherwise as to their accuracy. No person in this firm's employment has the authority to make or give any representation or warranty in respect of the property.