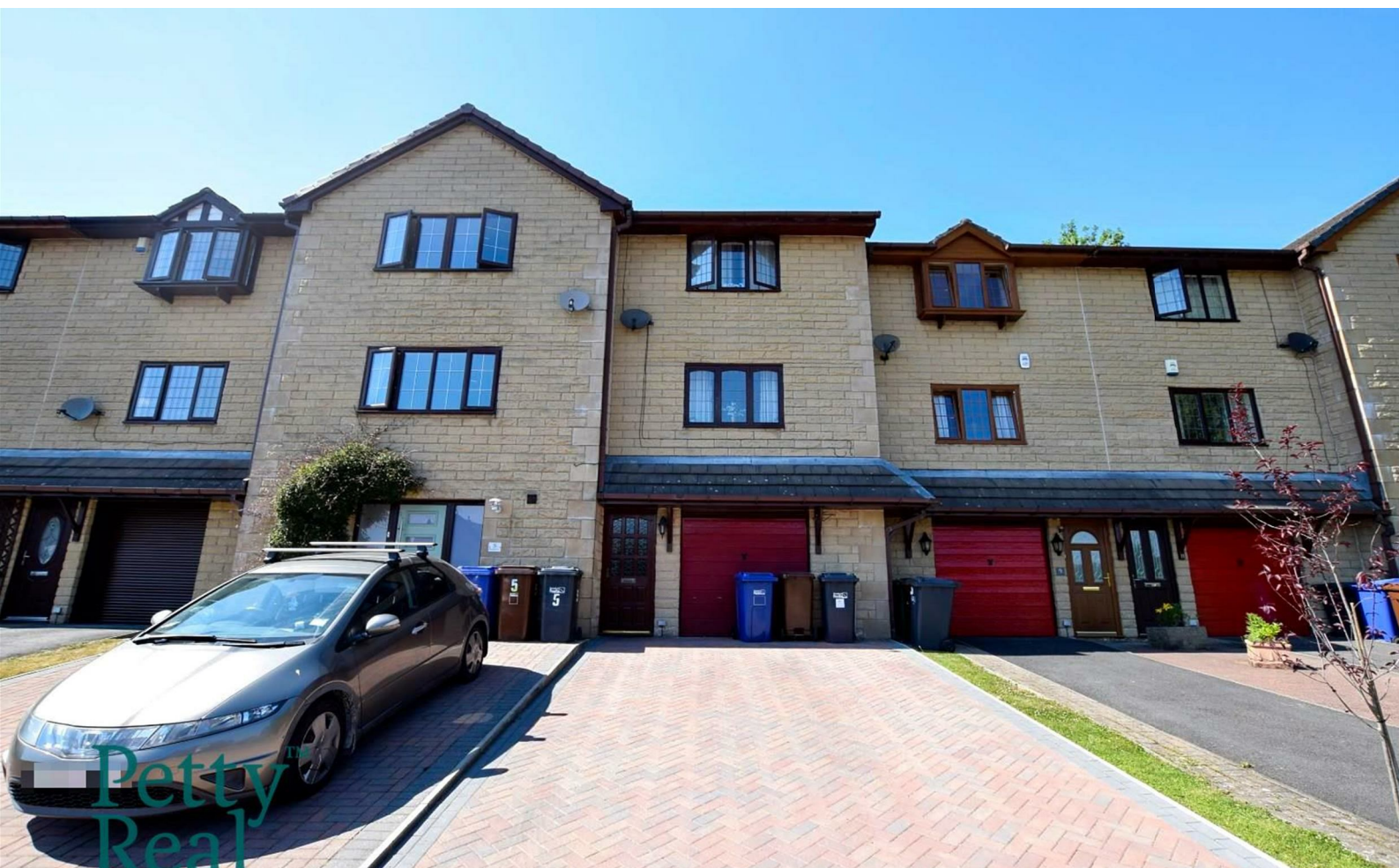


Because life is

PettyTM
Real

7 Park Street East
Barrowford
BB9 6JY



For Sale

Price £235,000

- Three storey town-house
- Three bedrooms
- Ideal for a family
- Open plan lounge/ dining area
- Modern fitted kitchen

- Modern three piece bathroom
- Gas central heating & double glazing
- Garden to the rear
- Garage & driveway
- No chain



An impressive three-bedroom, three-storey townhouse, located on a quiet private cul-de-sac in an elevated position within the highly sought-after Pendleside village of Barrowford. Renowned for its charming boutiques, independent shops, and stylish bistros, Barrowford offers a vibrant community atmosphere, while being just a five-minute drive from the M65, providing excellent commuter access to the M66 and Manchester.

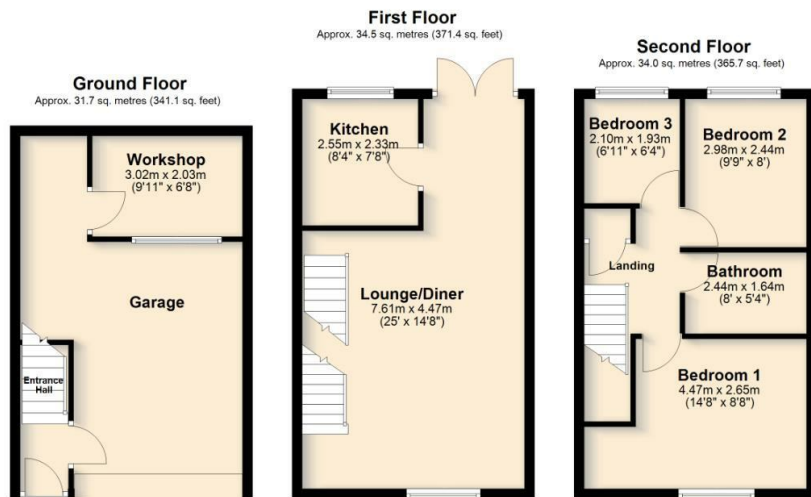
Presented to an exceptional standard throughout, the accommodation begins with a welcoming entrance hallway that provides internal access to the integral garage and workshop—ideal for storage, hobbies, or a home gym setup.

On the first floor, the home reveals a spacious open-plan lounge and dining area, featuring a traditional wooden fire surround with marble hearth and gas fire, sleek laminate flooring, and French doors opening out to the garden, creating a light and airy living space. Modern fitted kitchen is stylish and practical, fitted with a range of cream wall, base, and drawer units with chrome fittings, and includes a built-in gas oven and hob.

The second floor comprises three bedroom and a modern three-piece bathroom suite in white, complete with an over-bath shower and contemporary chrome fixtures.

Externally, the home enjoys a spacious rear patio framed by mature trees and shrubs, offering privacy and a peaceful retreat. To the front, a newly laid block-paved driveway provides off-road parking for two to three vehicles.

The property also benefits from the modern comforts of gas central heating and double glazing, making it move-in ready for the next owners.



Total area: approx. 100.2 sq. metres (1078.2 sq. feet)

All floorplans provided by Petty Real are for guidance only. Please check all dimensions before making any decisions reliant upon them.
Plan produced using PlanUp.



These particulars, whilst believed to be accurate are set out as a general outline only for guidance and do not constitute any part of an offer or contract. Intending purchasers should not rely on them as statements of representation of fact, but must satisfy themselves by inspection or otherwise as to their accuracy. No person in this firm's employment has the authority to make or give any representation or warranty in respect of the property.