

Because life is

PettyTM
Real

1 Moorland Close
Barrowford
BB9 6BG



For Sale

£365,000

- Spacious detached true bungalow
- Ideal for a downsizer
- Sought after location
- Three bedrooms
- Lounge & dining room

- Garden room
- Fitted kitchen
- Bathroom & shower
- Driveway, garage & large garden
- No chain



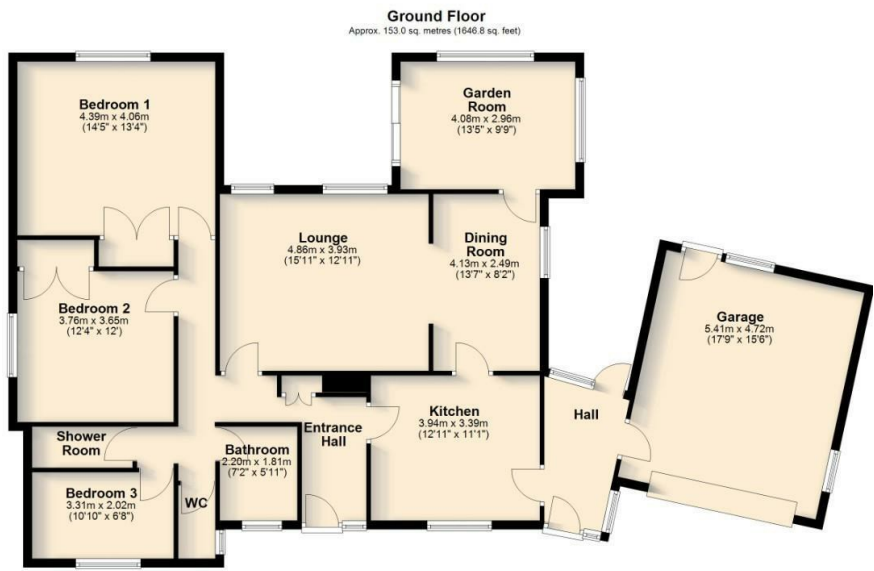
Situated in a sought-after residential area of Barrowford, this three-bedroom detached true bungalow on Moorland Close presents an excellent opportunity for buyers looking to put their own stamp on a property. Available with no onward chain, the home requires some TLC but benefits from significant recent upgrades, including a newly replaced roof and boiler within the last 12 months. Offering generous living space both inside and out, this property is ideal for a variety of buyers, including families and downsizers.

Upon entering, a welcoming main hallway leads to a spacious lounge, providing a comfortable and light-filled living area. The fitted kitchen offers ample storage and workspace, with access to a charming garden room, an ideal spot for relaxing while enjoying views of the expansive rear garden. A side hallway connects the main living areas to a large attached garage, offering excellent storage and potential for conversion if desired.

The bungalow features three well-proportioned bedrooms, ensuring plenty of space for family life or flexible use such as a home office. A two-piece bathroom, a separate WC, and an additional shower room provide convenience and practicality, catering to modern living needs. While the property does require some updating, it offers fantastic potential to create a stylish and comfortable home.

Externally, the property boasts a large garden, perfect for outdoor enjoyment, gardening enthusiasts, or entertaining. Off-road parking is available, ensuring easy access and convenience.

Located in the popular village of Barrowford, the bungalow is within easy reach of local amenities, scenic countryside, and excellent transport links. With ample potential and a desirable location, early viewing is highly recommended to appreciate the opportunity this home presents.



Total area: approx. 153.0 sq. metres (1646.8 sq. feet)
All floorplans provided by Petty Real are for guidance only. Please check all dimensions before making any decisions reliant upon them.
Plan produced using PlanUp.



These particulars, whilst believed to be accurate are set out as a general outline only for guidance and do not constitute any part of an offer or contract. Intending purchasers should not rely on them as statements of representation of fact, but must satisfy themselves by inspection or otherwise as to their accuracy. No person in this firm's employment has the authority to make or give any representation or warranty in respect of the property.