

Because life is

PettyTM
Real

14 Clover Croft
Higham
BB12 9HR



For Sale

Price £184,950

- Modern first-floor apartment
- Sought after village location
- Quiet gated community
- Entrance hallway
- Open plan lounge & kitchen

- Double bedroom with fitted wardrobes
- Modern four piece bathroom
- Spacious living room/occasional bedroom
- Ample storage
- Designated parking



This beautifully presented first-floor apartment offers a fantastic opportunity to own a home in the quiet, gated community of Higham, a popular village known for its charm and tranquility. The property is ideal for those seeking a peaceful yet well-connected location, with noteworthy features throughout.

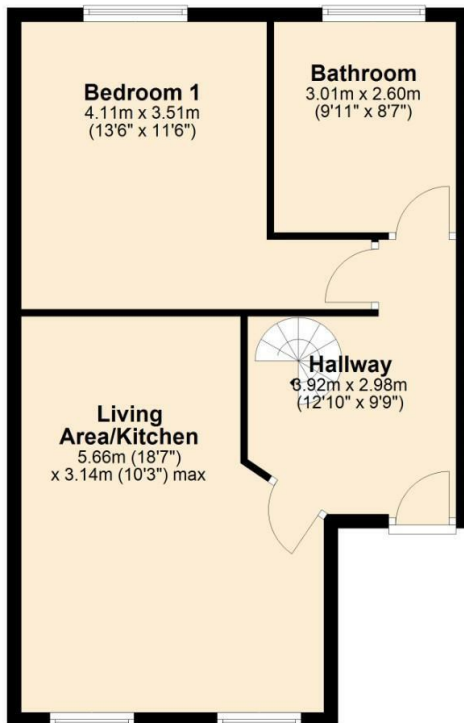
Upon entering the communal hallway, a staircase leads to the first-floor apartments. Inside, you are greeted by a welcoming hallway, complete with a striking spiral staircase that adds character to the space. The open-plan living room and fitted kitchen provide a modern and comfortable setting, perfect for both relaxing and entertaining. The apartment also boasts a spacious double bedroom and a contemporary four-piece bathroom suite.

On the upper floor, the property offers a large room with versatile potential. Whether used as an additional bedroom, office space, or a cozy lounge, this area adds flexibility and appeal to the home's layout.

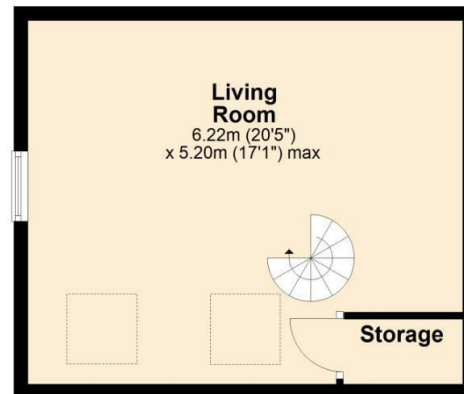
Externally, the front of the building features a gated car park with designated parking for residents, ensuring convenience and security. With its excellent presentation and prime location, early viewing is highly recommended to avoid disappointment.

No onward chain.

First Floor



Second Floor



Total area: approx. 88.2 sq. metres (949.5 sq. feet)



These particulars, whilst believed to be accurate are set out as a general outline only for guidance and do not constitute any part of an offer or contract. Intending purchasers should not rely on them as statements of representation of fact, but must satisfy themselves by inspection or otherwise as to their accuracy. No person in this firm's employment has the authority to make or give any representation or warranty in respect of the property.

134 Gisburn Road, Barrowford, Lancashire, BB9 6HQ
T. 01282 615900
Barrowford.sales@pettyreal.co.uk

www.pettyreal.co.uk