

Because life is

PettyTM
Real

2 The Fold
Barrowford
BB9 6JL



For Sale

- Beautiful three storey cottage
- Sought after location
- Ideal for first time buyer or downsizer
- Fitted dining kitchen
- Ground floor bathroom

Offers In The Region Of £185,000

- Spacious lounge
- 2 Double bedrooms
- Shower and seperate wc on the 2nd floor
- Garden to the front
- No chain

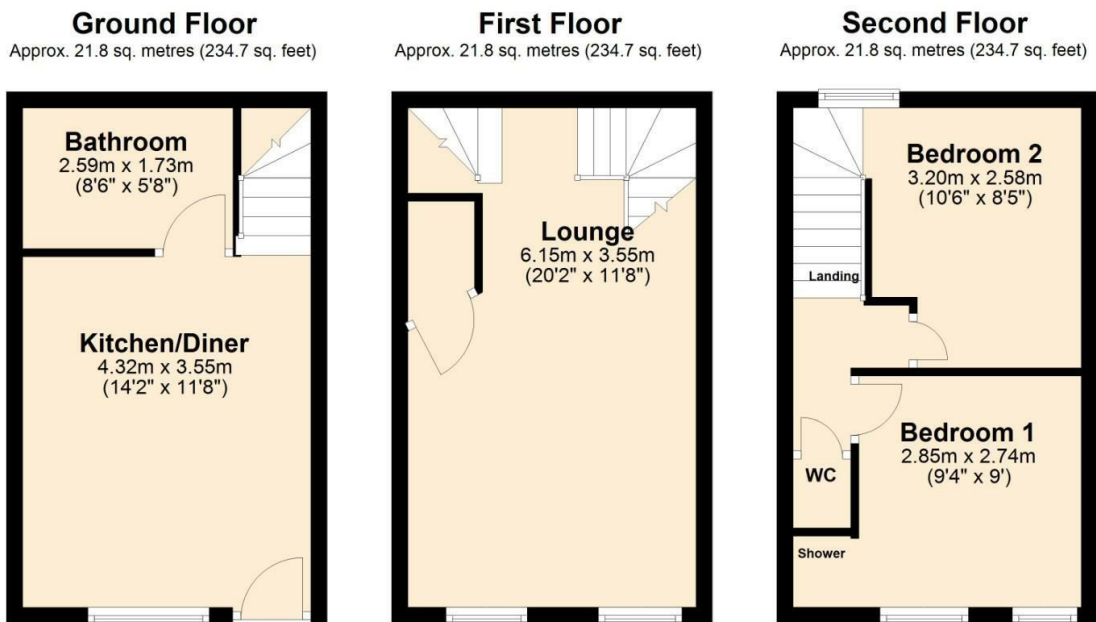


This charming period property, spread across three floors, is nestled in a picturesque location just off Gisburn Road. The home beautifully blends traditional character with modern comforts, featuring stone mullion windows fitted with double-glazed units and efficient gas central heating. The extensively fitted dining kitchen, finished in a classic country cream, offers a warm and inviting space for meals. The bathroom is modern and sleek, featuring a contemporary three-piece suite.

The entire first floor is dedicated to a spacious lounge, providing an elegant yet cozy area to relax or entertain. On the second floor, you'll find two delightful bedrooms, both showcasing stunning exposed beams set against the vaulted ceiling, adding to the property's unique charm. Additionally there is a separate WC and a shower is located to the main bedroom.

Outside, the cottage boasts a pretty forecourt garden, perfect for enjoying the tranquil surroundings. This delightful home offers generous accommodation, combining the appeal of a period cottage with the convenience of modern living, making it a truly special find.

No onward chain



Total area: approx. 65.4 sq. metres (704.2 sq. feet)



These particulars, whilst believed to be accurate are set out as a general outline only for guidance and do not constitute any part of an offer or contract. Intending purchasers should not rely on them as statements of representation of fact, but must satisfy themselves by inspection or otherwise as to their accuracy. No person in this firm's employment has the authority to make or give any representation or warranty in respect of the property.

134 Gisburn Road, Barrowford, Lancashire, BB9 6HQ
T. 01282 615900
Barrowford.sales@pettyreal.co.uk

www.pettyreal.co.uk