

Because life is

PettyTM
Real

12 Shap Close
Barrowford
BB9 6EZ



For Sale

£290,000

- Extended semi detached dormer bungalow
- Sought after location
- Ideal for family
- Hallway & house bathroom
- Lounge

- Dining room
- 4 bedrooms
- Shower room
- Driveway & garage
- Gardens front & rear



Nestled in the sought-after location of Barrowford, this charming four-bedroom semi-detached dormer bungalow offers a perfect blend of comfort and functionality. As you enter through the welcoming hallway, the layout flows seamlessly into various living spaces. The ground floor features a spacious lounge ideal for relaxation, a dining room perfect for entertaining, and a fully fitted dining kitchen equipped with high-quality Neff appliances. The ground floor also houses bedroom four, providing flexibility for guests or use as a home office. Completing this level is the house bathroom, designed with modern amenities to ensure comfort and convenience.

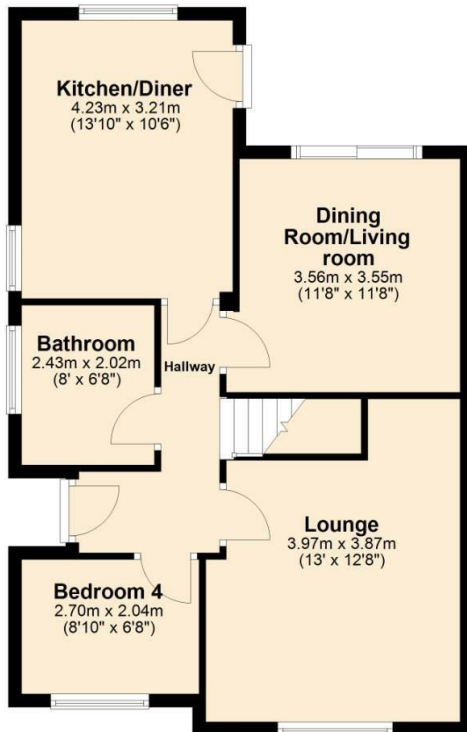
Upstairs, the property boasts a three-piece shower room, adding to the practicality of the home. The first floor accommodates the master bedroom, which features a convenient walk-in wardrobe, providing ample storage space. Additional bedrooms on this level offer flexibility for family living or guest accommodation.

The exterior of the property is equally impressive, with well-maintained gardens at both the front and rear, providing beautiful outdoor spaces for leisure and recreation. A driveway ensures ample parking space, while the garage adds further convenience for storage or vehicle security.

This dormer bungalow in Barrowford stands out with its thoughtful design and attention to detail, making it a perfect choice for those seeking a blend of style and practicality in a desirable location

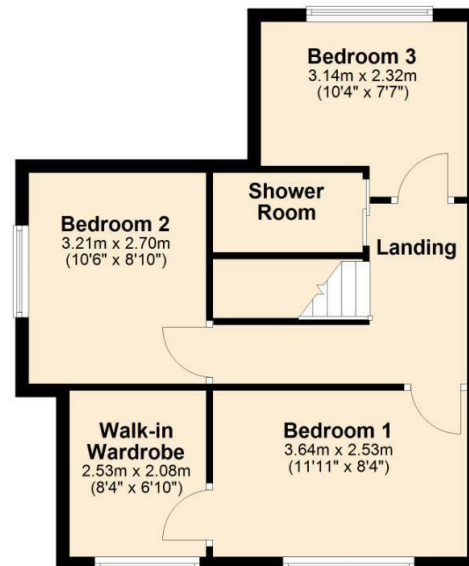
Ground Floor

Approx. 61.4 sq. metres (660.6 sq. feet)

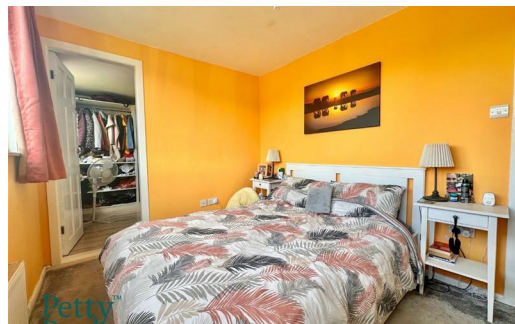


First Floor

Approx. 43.9 sq. metres (472.8 sq. feet)



Total area: approx. 105.3 sq. metres (1133.4 sq. feet)



These particulars, whilst believed to be accurate are set out as a general outline only for guidance and do not constitute any part of an offer or contract. Intending purchasers should not rely on them as statements of representation of fact, but must satisfy themselves by inspection or otherwise as to their accuracy. No person in this firm's employment has the authority to make or give any representation or warranty in respect of the property.

134 Gisburn Road, Barrowford, Lancashire, BB9 6HQ
 T. 01282 615900
 Barrowford.sales@pettyreal.co.uk

www.pettyreal.co.uk