

Because life is

Petty
Real™

5 Chevassut Close
Barrowford
BB9 6DR



For Sale

- Modern three bedroom detached
- Sought after location
- Ideal for a family
- Lounge
- Cloak room & utility

Price £275,000

- Contemporary kitchen with appliances
- Modern bathroom
- Three bedrooms
- Garden & garage
- Viewing advised

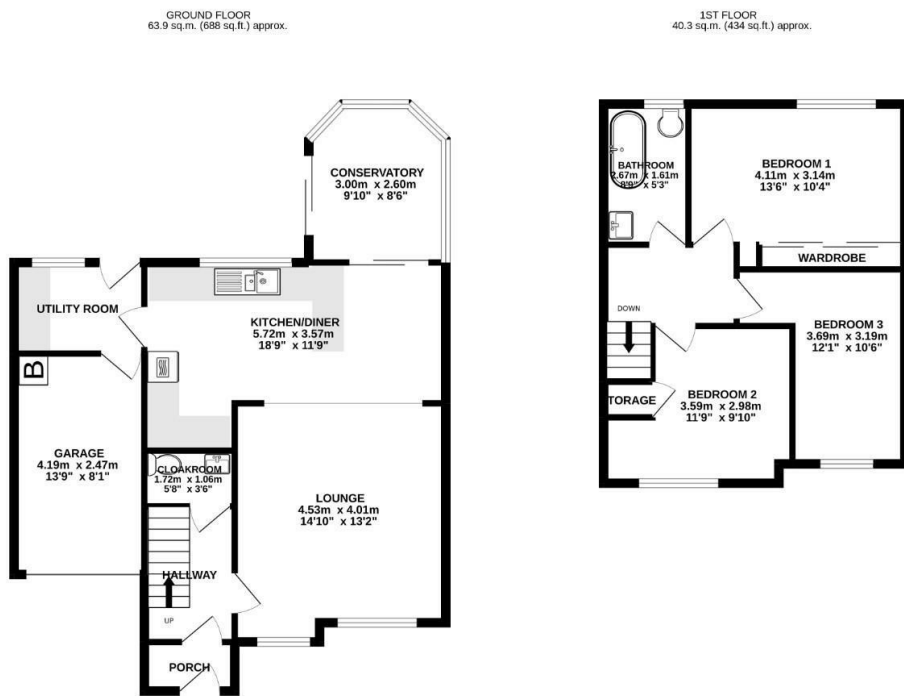


Spacious three bedroom detached dwelling located with in a quiet cul-de-sac in the sought after Carr Hall area of Barrowford. This superb home would make an ideal home for a growing family and offers contemporary accommodation arranged over two floors.

The property briefly comprising of: an entrance vestibule accessed via composite door, entrance hallway with an oak and glass balustrade staircase leading to the first floor / landing, ground floor two piece cloakroom, family sized lounge, modern fitted dining kitchen housing an excellent range of modern wall, base & drawer units, Quartz work surfaces, tiled flooring, recessed spot lights, inset sink with a chrome mixer tap, Bosch 4-ring induction hob, air induction hood over, Bosch integrated oven, Bosch integrated microwave, integrated 60/40 fridge/freezer, integrated AEG dishwasher and breakfast bar. Completing the ground floor accommodation is a UPVC doubled conservatory and useful utility room.

To the first floor is landing are three well proportioned bedrooms and a contemporary three piece bathroom suite which comprises, jacuzzi spa bath with mixer shower over, vanity sink and low level wc.

Externally to the front is a driveway which leads up to the integral garage with an 'up and over' door and has power, lighting & Baxi gas fired combination boiler To the rear is a large enclosed garden which is mainly laid to lawn with Indian stone paved patio area making this the perfect space for a family to enjoy.



TOTAL FLOOR AREA: 104.3 sq.m. (1122 sq.ft.) approx.
 Whilst every attempt has been made to ensure the accuracy of the floorplan contained here, measurements of doors, windows, rooms and any other items are approximate and no responsibility is taken for any error, omission or mis-statement. This plan is for illustrative purposes only and should be used as such by any prospective purchaser. The services, systems and appliances shown have not been tested and no guarantee as to their operability or efficiency can be given.
 Made with Metropix ©2022



These particulars, whilst believed to be accurate are set out as a general outline only for guidance and do not constitute any part of an offer or contract. Intending purchasers should not rely on them as statements of representation of fact, but must satisfy themselves by inspection or otherwise as to their accuracy. No person in this firms employment has the authority to make or give any representation or warranty in respect of the property.

134 Gisburn Road, Barrowford, Lancashire, BB9 6HQ
 T. 01282 615900
 Barrowford.sales@pettyreal.co.uk

www.pettyreal.co.uk