

Because life is

PettyTM
Real

6 Beckside
Salterforth
BB18 5BL



For Sale

£279,950

- Tastefully appointed town house
- Quiet village location
- On the fringe of open countryside
- 3 Double bedrooms
- Modern dining kitchen with appliances

- Lounge with double French doors
- En-suite & family bathroom
- Low maintenance garden
- Off road parking
- GFCH & UPVC DG



Built in 2017, this immaculate semi-detached townhouse is located on this quiet sought after development of similar type properties providing spacious three bedroom family accommodation. Located on the fringe of open countryside within the popular village and is in walking distance to Salterforth Primary school and the Leeds Liverpool canal. The property is also only a few minutes drive of Barnoldswick town centre and all amenities.

The property briefly comprises, to the ground floor, an entrance hallway, two piece cloakroom with corner pedestal wash basin and toilet with concealed cistern. The modern fully fitted white gloss kitchen has a superb range of coordinating base and wall units housing integrated fridge and freezer, double electric oven, gas hob with extractor fan over, 1½ bowl stainless steel sink unit and providing plenty of space for a dining table. The lounge is an excellent sized reception room and has French doors leading out onto the garden.

Upstairs to the first floor, off the main landing area is a double bedroom with plenty of space for storage, also a further double bedroom which is currently being used as a home office and the main family bathroom with a modern three piece suite comprising of paneled bath, wash basin and wc and useful storage cupboard.

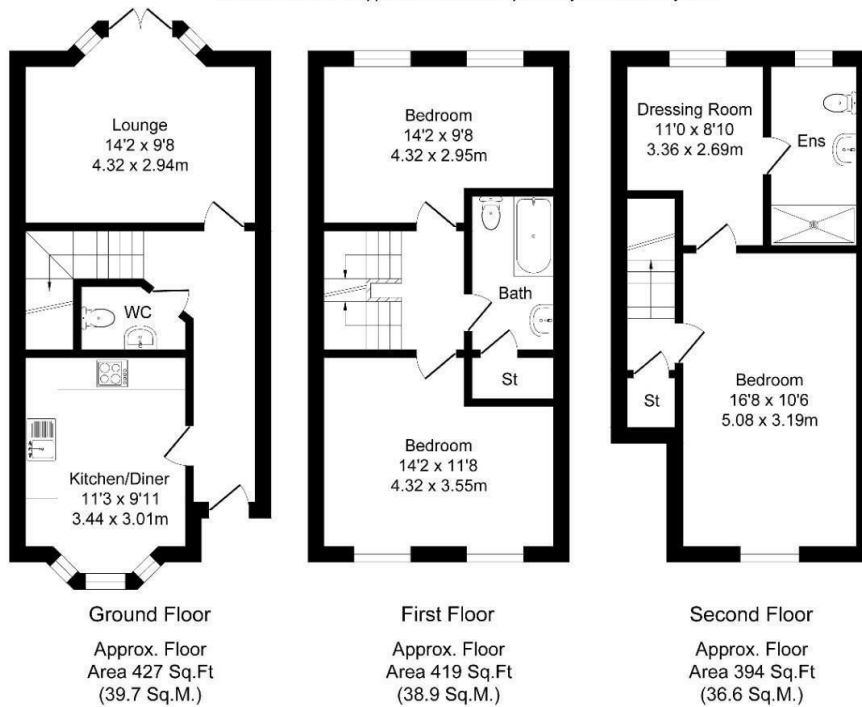
Stairs lead up to the second floor where there is a small landing which leads into the master bedroom which is spacious double bedroom with Velux skylight, walk in dressing room and en-suite shower room comprising glass and chrome shower unit, white wc and wash hand basin.

Externally there is a double length driveway and to the rear is a private low maintenance garden with an Indian stone flagged patio and timber shed.

This home is well suited for someone looking for a move-in ready property.

Beckside Total Approx. Floor Area 1240 Sq.ft. (115.2 Sq.M.)

Surveyed and drawn by Lens Media for illustrative purposes only. Not to scale. Whilst every attempt was made to ensure the accuracy of the floor plan, all measurements are approximate and no responsibility is taken for any error.



These particulars, whilst believed to be accurate are set out as a general outline only for guidance and do not constitute any part of an offer or contract. Intending purchasers should not rely on them as statements of representation of fact, but must satisfy themselves by inspection or otherwise as to their accuracy. No person in this firm's employment has the authority to make or give any representation or warranty in respect of the property.