

Because life is

PettyTM
Real

34 Bedford Street
Barrowford
BB9 6DA



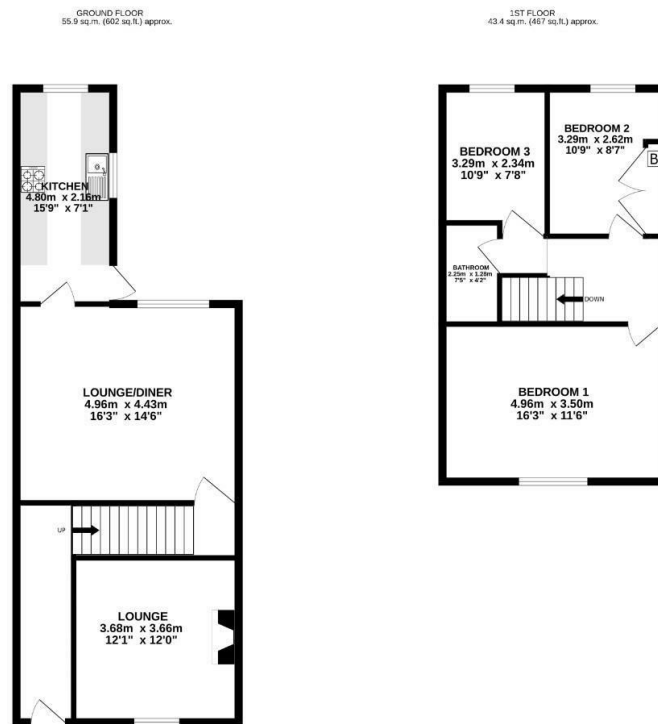
For Sale

£130,000

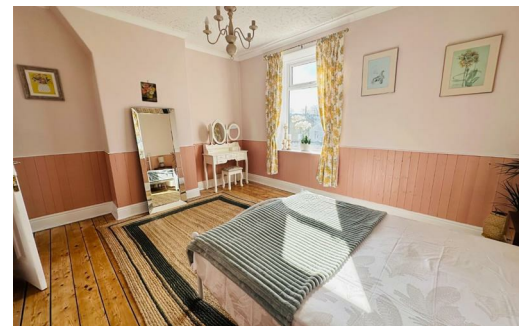
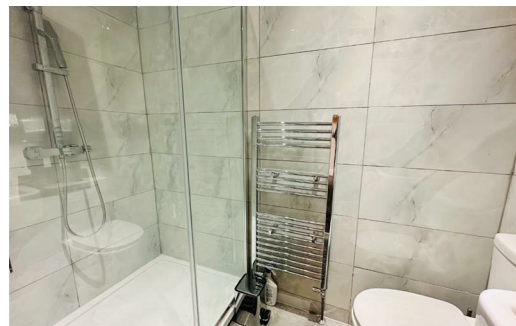
- Mid terrace property
- Lounge & living room with electric fire
- Extended kitchen.
- Two double bedrooms & one single
- Built in oven & hob to the kitchen
- Brand new shower room
- GCH & DBL glazing
- Rear yard and garden area
- Within walking distance of amenities
- Viewing advised.



A garden fronted mid terrace house located in the popular Pendleside village of Barrowford, conveniently located being within walking distance of all local facilities and amenities and Victoria Park is only a short walk away. The accommodation comprises hallway, lounge, living room with electric fire, extended kitchen with built in oven and hob. To the first floor are two double bedrooms, and one single bedroom. There is also a three piece bathroom- wc, sink and walk in shower The property is further complemented by the modern day comforts of gas central heating and double glazing. Externally there is a garden area to the front and rear yard.



TOTAL FLOOR AREA: 99.3 sq.m. (1,069 sq ft.) approx.
Whilst every attempt has been made to ensure the accuracy of the floorplans contained herein, measurements of areas, volumes, etc. are not intended to be a representation of fact, but must satisfy themselves by inspection or otherwise as to their accuracy. No person in this firm's employment has the authority to make or give any representation or warranty in respect of the property.



These particulars, whilst believed to be accurate are set out as a general outline only for guidance and do not constitute any part of an offer or contract. Intending purchasers should not rely on them as statements of representation of fact, but must satisfy themselves by inspection or otherwise as to their accuracy. No person in this firm's employment has the authority to make or give any representation or warranty in respect of the property.

134 Gisburn Road, Barrowford, Lancashire, BB9 6HQ
 T. 01282 615900
 Barrowford.sales@pettyreal.co.uk

www.pettyreal.co.uk