

Because life is

Petty<sup>TM</sup>  
Real

34 Church Street  
Barrowford  
Nelson  
BB9 6EE



- For Sale by Auction – T & C's apply
- Subject to an undisclosed Reserve Price
- Reservation Fee applicable
- The Modern Method of Auction



## For Sale

Auction Guide £75,000

- 2 bedroom terrace
- Needs full modernisation
- Elevated position
- Close to Barrowford Centre
- Suit speculator or FTB



\*\*\*For Sale by Modern Method of Auction\*\*\*

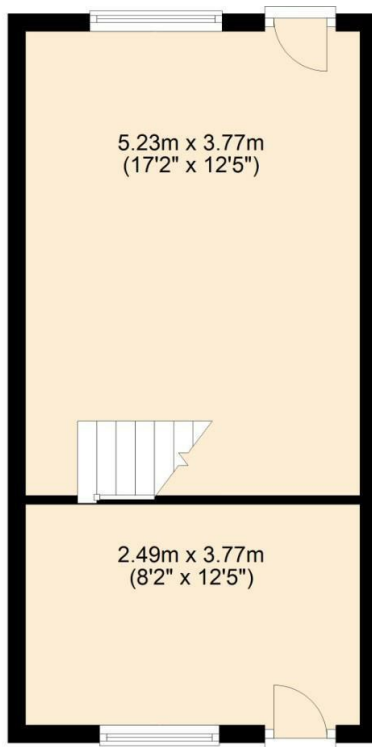
Set in an elevated position overlooking the village of Barrowford this 2 bedroom property requires a full refurbishment program and will suit a FTB or property speculator.

Conveniently located for the bars bistros and boutiques that the village has to offer and also benefits from a garden area to the rear held on a ground lease with Pendle Borough Council. Any buyer will have to make their own separate enquiries.

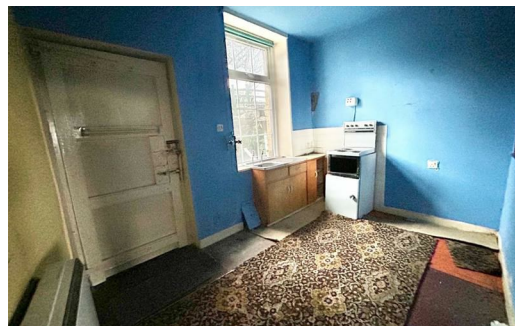
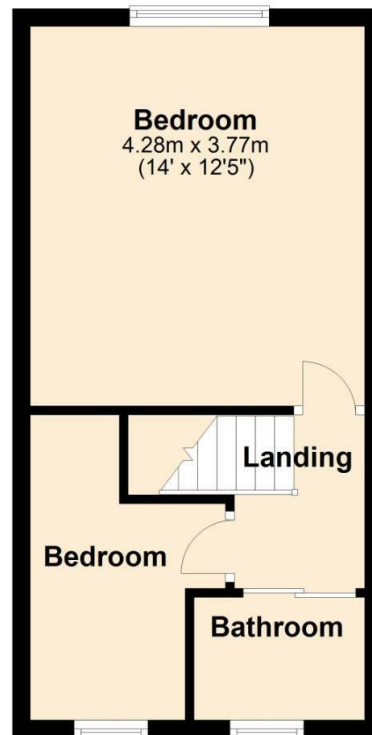
The property briefly comprises Living Room Kitchen 2 Bedrooms and a bathroom.

NO CHAIN.

**Ground Floor**



**First Floor**



These particulars, whilst believed to be accurate are set out as a general outline only for guidance and do not constitute any part of an offer or contract. Intending purchasers should not rely on them as statements of representation of fact, but must satisfy themselves by inspection or otherwise as to their accuracy. No person in this firm's employment has the authority to make or give any representation or warranty in respect of the property.

134 Gisburn Road, Barrowford, Lancashire, BB9 6HQ  
T. 01282 615900  
Barrowford.sales@pettyreal.co.uk

[www.pettyreal.co.uk](http://www.pettyreal.co.uk)