

Because life is

Petty<sup>TM</sup>  
Real

10 Wilton Street  
Barrowford  
BB9 8PU



For Sale

£125,000

- Spacious 2 Bedroom terrace
- Fitted Kitchen
- Two Double Bedrooms
- Modern 3-piece Bathroom
- Gas Fired Central Heating
- Close to Bull Holme Recreation Fields
- Walking Distance of amenities
- Permit Parking
- UPVC Double Glazing
- Tax Band A



\*\*\* ATTENTION FIRST TIME BUYERS \*\*\*

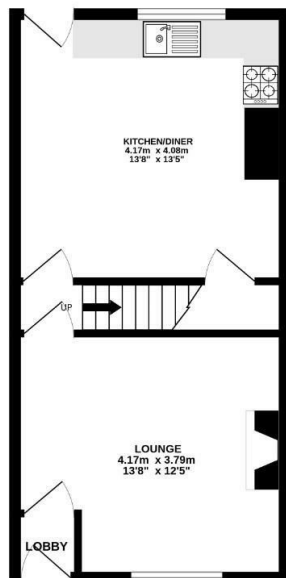
A spacious two bedroom stone built Victorian terrace property occupying a level position close to Bull Holme recreation fields and within walking distance of amenities. This would make the perfect home for a first time buyer to gain a foothold on the property ladder.

The front door opens to an entrance lobby with space for coats, which leads into a spacious lounge with living flame gas fire. Fitted kitchen has a range of matching units, contrasting work surfaces with stainless steel sink unit and useful under stairs storage.

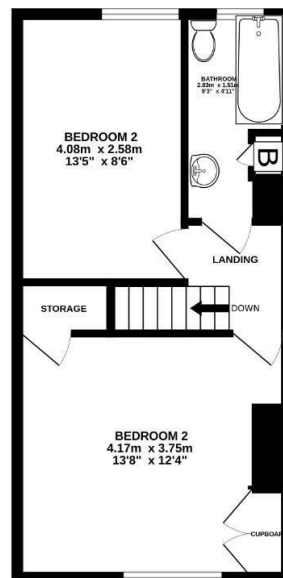
On the first floor there are two excellent double bedrooms, the larger is front facing with a walk-in cupboard together with a smaller rear facing double bedroom. The modern three piece bathroom houses a three piece white suite comprising of pedestal wash basin, bath with shower over, mixer tap, and low level w.c. Fitted storage cupboard.

Externally to the front is permit parking and to the rear is a neat enclosed rear yard.

GROUND FLOOR  
34.5 sq.m. (371 sq.ft.) approx.



1ST FLOOR  
34.8 sq.m. (374 sq.ft.) approx.



TOTAL FLOOR AREA: 69.3 sq.m. (745 sq.ft.) approx.

Whilst every attempt has been made to ensure the accuracy of the floorplan contained here, measurements of doors, windows, rooms and any other items are approximate and no responsibility is taken for any error, omission or mis-statement. This plan is for illustrative purposes only and should be used as such by any prospective purchaser. The services, systems and appliances shown have not been tested and no guarantee as to their suitability or reliability can be given.  
Made with Floorplan CS200



These particulars, whilst believed to be accurate are set out as a general outline only for guidance and do not constitute any part of an offer or contract. Intending purchasers should not rely on them as statements of representation of fact, but must satisfy themselves by inspection or otherwise as to their accuracy. No person in this firm's employment has the authority to make or give any representation or warranty in respect of the property.

134 Gisburn Road, Barrowford, Lancashire, BB9 6HQ  
T. 01282 615900  
Barrowford.sales@pettyreal.co.uk

[www.pettyreal.co.uk](http://www.pettyreal.co.uk)