

Because life is

Petty<sup>TM</sup>  
Real

73 Gawthorpe Edge Padiham Road  
Burnley  
BB12 6PA



For Sale

Asking Price £85,000

- Highly Desirable Location.
- Corner Plot Park Home.
- Large Reception Room
- Two Bedrooms.
- Fitted Wardrobes & Storage In Bedrooms.
- Three Piece Bathroom.
- Located Just Off A Main Bus Route.
- EPC Rating: E.
- Council Tax Band: A.
- Freehold.





Welcome to Gawthorpe Edge, Burnley! This desirable park home is located just off Burnley Road, offering a spacious and practical layout. Upon entering, you are greeted by a large hallway that connects the reception room, kitchen, bathroom, and two bedrooms.

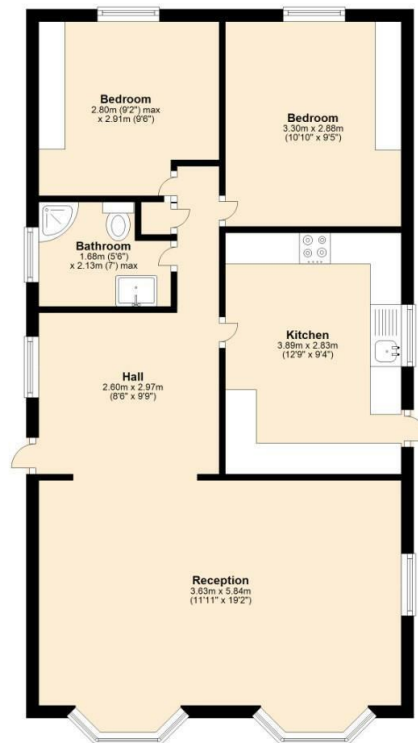
The reception room, spanning the full width of the home at 5.8m, features two bay windows at the front and a side window, allowing plenty of natural light to fill the room. It's a bright and welcoming space, perfect for relaxation.

Moving through to the kitchen, you'll find ample counter space and storage, ideal for home cooking. The bathroom is equipped with a shower, toilet, and sink, providing all the essentials.

Both bedrooms are generously sized and come with built-in wardrobes, offering plenty of storage without the need for freestanding furniture.

This well-designed home combines comfort with functionality, making it a great choice for anyone looking for a bright, spacious living space. Don't miss out on this fantastic opportunity!

#### Ground Floor



#### Gawthorpe Edge, Burnley



These particulars, whilst believed to be accurate are set out as a general outline only for guidance and do not constitute any part of an offer or contract. Intending purchasers should not rely on them as statements of representation of fact, but must satisfy themselves by inspection or otherwise as to their accuracy. No person in this firm's employment has the authority to make or give any representation or warranty in respect of the property.

4 Manchester Road, Burnley, Lancashire, BB11 1HH

T.

[Burnley.sales@pettyreal.co.uk](mailto:Burnley.sales@pettyreal.co.uk) [burnley.lettings@pettyreal.co.uk](mailto:burnley.lettings@pettyreal.co.uk)  
[property.management@pettyreal.co.uk](mailto:property.management@pettyreal.co.uk)

[www.pettyreal.co.uk](http://www.pettyreal.co.uk)