

Because life is

Petty  
Real™

Cork Holbeck Park  
Burnley  
BB10 1QD



For Sale

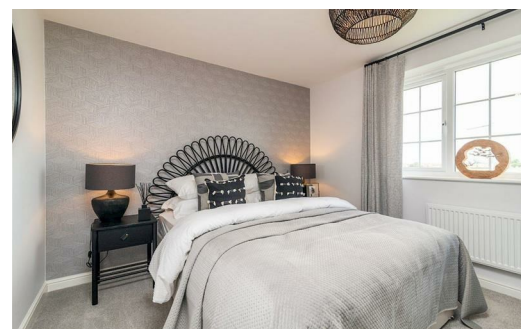
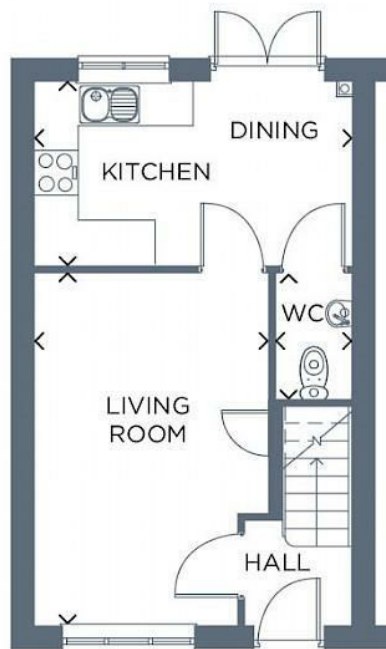
£149,995

- Two Bedrooms
- Semi-detached
- West-facing garden
- Kitchen Diner
- Downstairs WC
- 10 Year NHBC Warranty and Insurance
- 2 Year Gleeson Warranty
- Freehold



Discover The Cork, a thoughtfully designed two-bedroom home, perfect for modern living. The ground floor features a bright and inviting living room, offering the ideal space to relax and unwind. This flows effortlessly into the contemporary kitchen-diner, complete with stylish French doors that open onto the rear garden, creating a wonderful indoor-outdoor living experience. A handy cloakroom completes the ground floor, adding extra convenience.

Upstairs, you'll find two generously sized bedrooms, each offering ample space for comfort and versatility. The family bathroom, finished to a high standard, adds to the appeal of this charming home. The Cork offers a perfect blend of practicality and style for modern-day living.



These particulars, whilst believed to be accurate are set out as a general outline only for guidance and do not constitute any part of an offer or contract. Intending purchasers should not rely on them as statements of representation of fact, but must satisfy themselves by inspection or otherwise as to their accuracy. No person in this firm's employment has the authority to make or give any representation or warranty in respect of the property.

4 Manchester Road, Burnley, Lancashire, BB11 1HH

T.

[burnley.sales@pettyreal.co.uk](mailto:burnley.sales@pettyreal.co.uk) [burnley.lettings@pettyreal.co.uk](mailto:burnley.lettings@pettyreal.co.uk)  
[property.management@pettyreal.co.uk](mailto:property.management@pettyreal.co.uk)

[www.pettyreal.co.uk](http://www.pettyreal.co.uk)