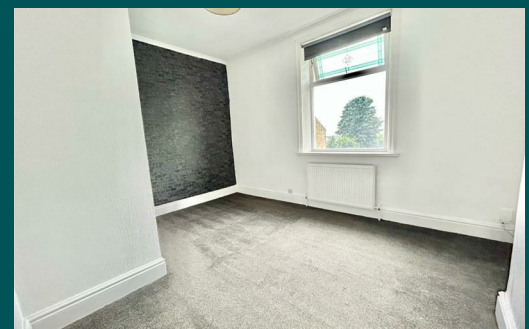


Because life is

Petty<sup>TM</sup>  
Real

449 Burnley Road  
Colne  
BB8 8LA



For Sale

£695 PCM

- Three Bedrooms
- Two Reception Rooms
- Three Piece Bathroom
- Large Kitchen
- Close to Transport Links

- Breakfast Bar
- Petty Real
- EPC: D
- Council Tax Band: A
- Deposit £695



D

This spacious three-bedroom terraced house in Colne offers comfortable and practical living, ideal for families or professionals.

The property features two generous reception rooms, perfect for both dining and lounging areas. The large kitchen provides plenty of counter space and storage, offering a functional layout for daily cooking.

Upstairs, there are three well-sized bedrooms, filled with natural light, and a three-piece bathroom for convenience. Situated close to local schools and with excellent transport links nearby, this property is ideally suited for families or professionals looking for easy access to amenities and commuting routes.

Our initial tenancy agreements are for 6 or 12 months.

Although these particulars are thought to be materially correct their accuracy cannot be guaranteed and they do not form part of any contract.

A holding deposit capped at one weeks rent to reserve the property. If the application is successful this can be used towards the rent and deposit.



These particulars, whilst believed to be accurate are set out as a general outline only for guidance and do not constitute any part of an offer or contract. Intending purchasers should not rely on them as statements of representation of fact, but must satisfy themselves by inspection or otherwise as to their accuracy. No person in this firms employment has the authority to make or give any representation or warranty in respect of the property.

4 Manchester Road, Burnley, Lancashire, BB11 1HH

T.

[burnley.sales@pettyreal.co.uk](mailto:burnley.sales@pettyreal.co.uk) [burnley.lettings@pettyreal.co.uk](mailto:burnley.lettings@pettyreal.co.uk)  
[property.management@pettyreal.co.uk](mailto:property.management@pettyreal.co.uk)

[www.pettyreal.co.uk](http://www.pettyreal.co.uk)