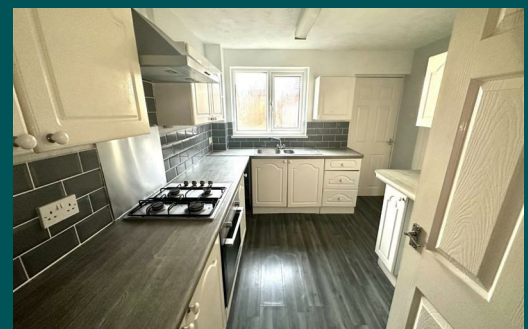
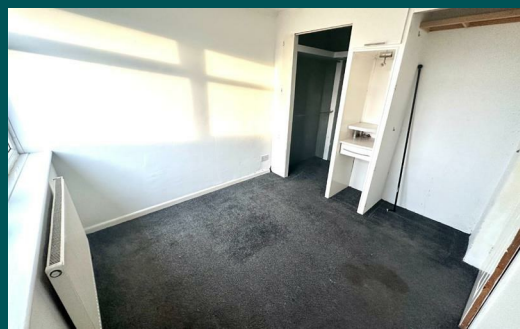


Because life is

Petty
Real™

11 Somerset Grove
Church
Accrington
BB5 4AJ



For Sale

£750 PCM

- Three Bedrooms
- Spacious Living/Dining Area
- Three Piece Bathroom
- Front and Back Garden
- Fitted Wardrobes

- EPC: D
- Driveway
- Council Tax Band: A
- Close to Transport Links and Town Centre
- Deposit £750



Welcome to this inviting 3-bedroom house located in the charming neighbourhood of Church, Accrington. As you step into the hallway, you're greeted by a warm ambiance that sets the tone for comfortable living.

To the right, discover a spacious living/dining area, perfect for relaxing evenings with loved ones or hosting gatherings. The layout provides versatility for various furniture arrangements, accommodating your lifestyle seamlessly.

To the back of the house, you'll find the kitchen, boasting ample cupboard space for all your storage needs. Meal preparation becomes a breeze in this well-appointed kitchen, offering functionality without sacrificing style.

To the upstairs is three good sized bedrooms, two consisting on wardrobe storage ensuring convenient storage solutions for clothing and personal items.

A three-piece bathroom provides comfort and convenience for all occupants.

Upstairs, the landing storage provides additional space for household essentials, enhancing the home's efficiency.

Conveniently located close to transport links, commuting is made easy, while the town centre is within walking distance, offering access to amenities and services.

Our initial tenancy agreements are for 6 or 12 months.

Although these particulars are thought to be materially correct their accuracy cannot be guaranteed and they do not form part of any contract.

A holding deposit capped at one weeks rent to reserve the property. If the application is successful this can be used towards the rent and deposit.



These particulars, whilst believed to be accurate are set out as a general outline only for guidance and do not constitute any part of an offer or contract. Intending purchasers should not rely on them as statements of representation of fact, but must satisfy themselves by inspection or otherwise as to their accuracy. No person in this firm's employment has the authority to make or give any representation or warranty in respect of the property.

4 Manchester Road, Burnley, Lancashire, BB11 1HH

T.

Burnley.sales@pettyreal.co.uk burnley.lettings@pettyreal.co.uk
property.management@pettyreal.co.uk

www.pettyreal.co.uk