

Because life is

Petty
Real™

Plot 123, Canal Walk Manchester Road
Hapton
BB12 7LF



For Sale

£299,995

- £10k deposit contribution
- Move in now - WAS £309,995 | NOW £299,995*
- Extras included worth over £12,000
- Extras include upgraded kitchen!
- Integrated appliances included!

- Blinds and light fittings included
- En-suite to master bedroom
- 10-Year NHBC Warranty
- registered with NHQB
- Terms and conditions apply



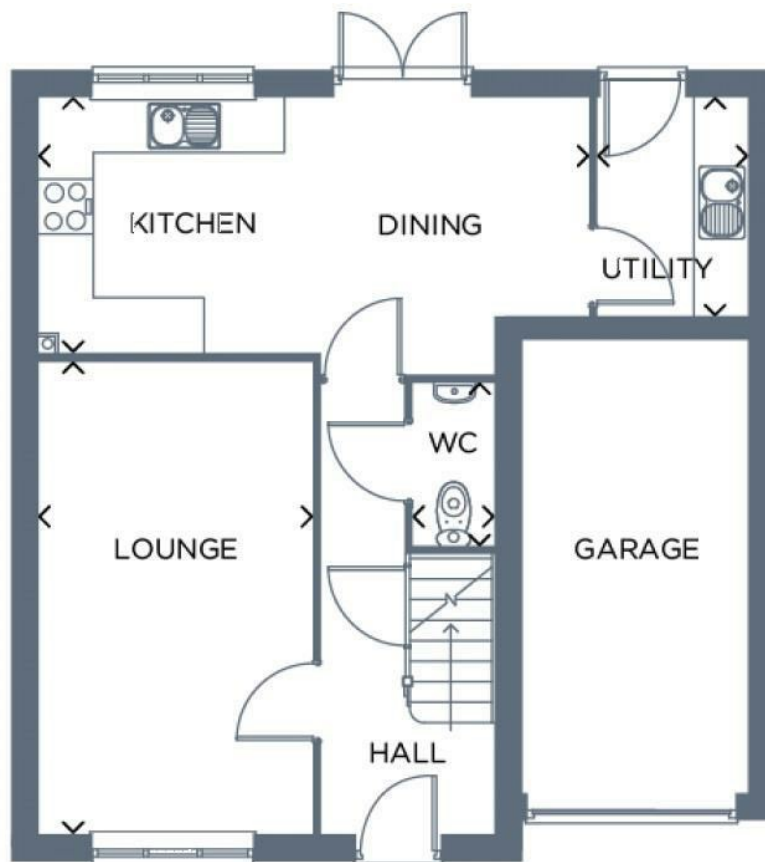
Discover the perfect family home with the four-bedroom Waterford, now available at a reduced price of £299,995, down from £309,995 and ready to move into. This exceptional property offers a blend of modern design and practical features, making it an ideal choice for families seeking both comfort and style.

Upon entering, you'll be greeted by a large, inviting living room, perfect for relaxing and entertaining. The open-plan kitchen-dining area is a highlight, featuring French doors that lead out to the garden, allowing for plenty of natural light and seamless indoor-outdoor living. A useful utility room adds convenience, helping to keep the main living areas clutter-free. Additionally there is a downstairs w/c.

The Waterford boasts four well-proportioned bedrooms, ensuring ample space for everyone. The main bedroom includes a private en-suite, offering a touch of luxury and added privacy. Completing this superb home is a convenient integral garage and a private drive, providing secure parking and additional storage space.

Take advantage of the incredible extras worth over £12,200 included with this home, along with a £10,000 price reduction. Extras include: Upgraded kitchen with integrated fridge freezer, oven and hob, and dishwasher, turf and fencing and flooring, blinds and light fittings throughout. Additionally, benefit from a £10,000 deposit contribution, making this home even more affordable. Terms and conditions apply to these offers, so be sure to review them for full details.

Don't miss out on this fantastic opportunity to own a stylish and spacious home that perfectly caters to modern family living. Contact us today to arrange a viewing and make the Waterford your new home.



These particulars, whilst believed to be accurate are set out as a general outline only for guidance and do not constitute any part of an offer or contract. Intending purchasers should not rely on them as statements of representation of fact, but must satisfy themselves by inspection or otherwise as to their accuracy. No person in this firm's employment has the authority to make or give any representation or warranty in respect of the property.

4 Manchester Road, Burnley, Lancashire, BB11 1HH

T.

burnley.sales@pettyreal.co.uk burnley.lettings@pettyreal.co.uk
property.management@pettyreal.co.uk

www.pettyreal.co.uk