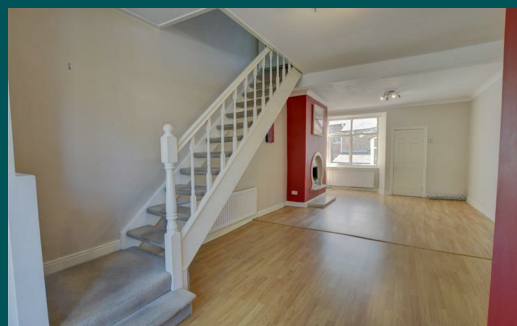


Because life is

Petty<sup>TM</sup>  
Real

20 Louvain Street  
Barnoldswick  
BB18 5LA



For Sale

£675 PCM

- Three Bedrooms
- Large Living Room
- Three Piece Bathroom Suite
- Built in Oven & Hob
- Fronted Mid Terraced

- Enclosed Rear yard
- Council Tax: A
- EPC: D
- Deposit £675
- NO SMOKERS



A well presented garden fronted mid terraced property providing a spacious family home, conveniently located and within walking distance to all local amenities, transport links and schools.

The property briefly comprises of one reception rooms, kitchen complete with an electric oven, hob and extractor.

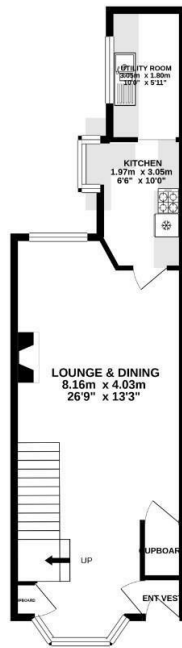
On the first floor there are three bedrooms, there is a house bathroom. The property benefits from uPVC double glazing and gas central heating.

To the front of the property is a low maintenance garden, with an enclosed flagged yard.

Our initial tenancy agreements are for 6 or 12 months.

**NO SMOKERS**

GROUND FLOOR  
47.1 sq.m. (507 sq.ft.) approx.

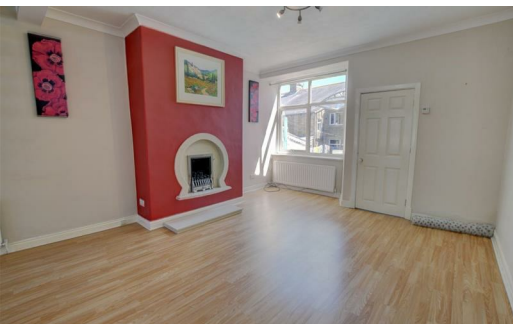


1ST FLOOR  
33.1 sq.m. (357 sq.ft.) approx.



TOTAL FLOOR AREA: 80.2 sq.m. (864 sq.ft.) approx.

Whilst every attempt has been made to ensure the accuracy of the floorplans contained herein, measurements of floors, windows, doors and any other items are approximate and no responsibility is taken for any error, omission or mis-statement. This plan is for illustrative purposes only and should be used as such for any prospective purchase. The services, systems and appliances shown hereon are not tested and no guarantee as to their availability or efficiency can be given.  
Made with Hozonplan (2021)



These particulars, whilst believed to be accurate are set out as a general outline only for guidance and do not constitute any part of an offer or contract. Intending purchasers should not rely on them as statements of representation of fact, but must satisfy themselves by inspection or otherwise as to their accuracy. No person in this firm's employment has the authority to make or give any representation or warranty in respect of the property.

4 Manchester Road, Burnley, Lancashire, BB11 1HH  
T.

[burnley.sales@pettyreal.co.uk](mailto:burnley.sales@pettyreal.co.uk) [burnley.lettings@pettyreal.co.uk](mailto:burnley.lettings@pettyreal.co.uk)  
[property.management@pettyreal.co.uk](mailto:property.management@pettyreal.co.uk)

[www.pettyreal.co.uk](http://www.pettyreal.co.uk)