

Because life is

PettyTM
Real

57 Halifax Road
Briercliffe
Burnley
BB10 3QN



For Sale

Asking Price £190,000

- No Onward Chain
- Two Bedrooms
- Extended Kitchen Diner
- Modern Decor
- Terraced House

- Beautiful Location
- Modern Kitchen Appliances
- Light Spacious Living Room
- Full of Character
- Viewing Highly Recommended!



Welcome to your dream home on Halifax Road, nestled in the sought-after area of Briercliffe. This stunning terraced house has been meticulously modernised, boasting impeccable presentation throughout.

The spacious living room is bathed in natural light, offering a perfect setting for relaxation and gatherings. Adorned with a stylish log burner, it exudes warmth and comfort. Understairs storage provides practical convenience, keeping clutter at bay and maximizing space efficiency.

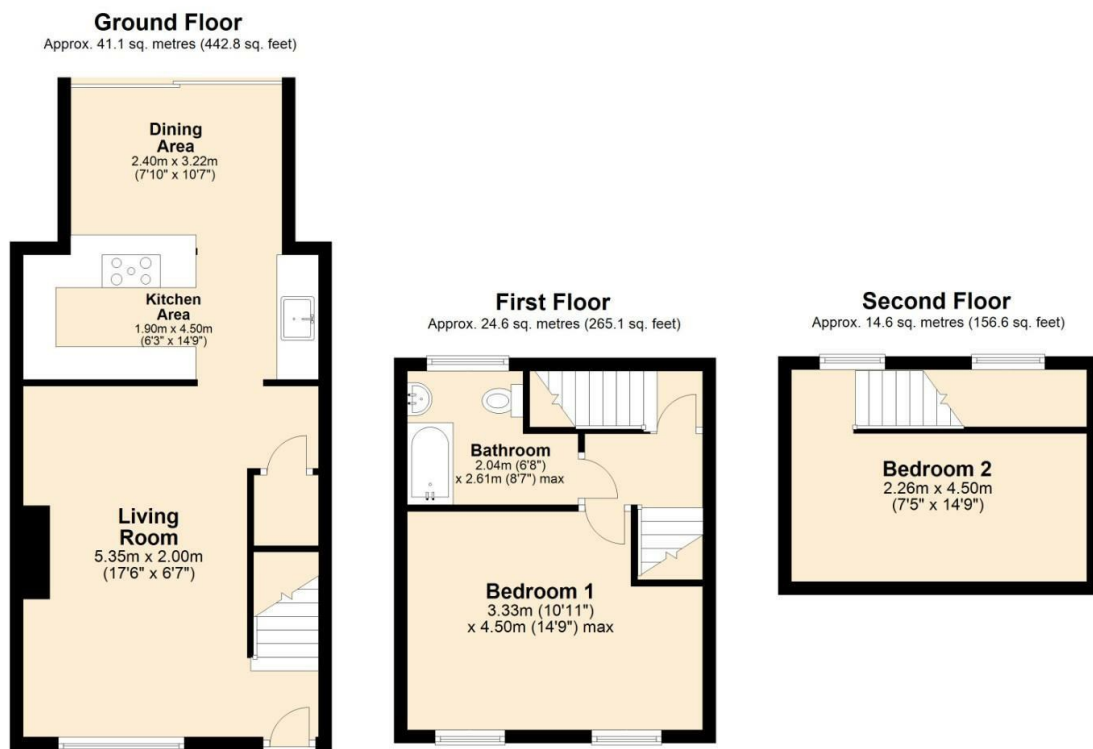
Continuing into the rear of the property, a stunning extended kitchen diner awaits. Featuring sleek handleless cabinets, fitted appliances, and an integrated sink, this culinary haven is a testament to modern design and functionality. Sliding patio doors seamlessly connect the indoor and outdoor spaces, leading to the garden. The garden is a generous space with the potential to personalise it to suit your preferences and is great for enjoying the sun throughout the day.

Ascending the stairs, the first bedroom awaits, boasting fitted furniture and illuminated by contemporary spotlights. The bathroom, accessible from the landing, exudes sophistication with its white three-piece suite and a striking exposed brick wall feature.

Ascend further to discover the second bedroom, where modernity meets charm. The staircase is adorned with a chic glass balustrade, while the painted white exposed beams enhance the sleek decor, creating a serene retreat.

The property also benefits from a new roof, fitted just 5 years ago.

This property on Halifax Road is not just a house; it's a testament to modern living at its finest. With its impeccable design, thoughtful touches, and prime location in Briercliffe, prepare to fall in love with your new home from the moment you step inside.



Total area: approx. 80.3 sq. metres (864.6 sq. feet)



These particulars, whilst believed to be accurate are set out as a general outline only for guidance and do not constitute any part of an offer or contract. Intending purchasers should not rely on them as statements of representation of fact, but must satisfy themselves by inspection or otherwise as to their accuracy. No person in this firm's employment has the authority to make or give any representation or warranty in respect of the property.

4 Manchester Road, Burnley, Lancashire, BB11 1HH

T.

burnley.sales@pettyreal.co.uk burnley.lettings@pettyreal.co.uk
property.management@pettyreal.co.uk

www.pettyreal.co.uk