

Because life is

Petty
Real™

24 Lothersdale Close
Burnley
BB10 2BU



For Sale

Asking Price £170,000

- Three Bedrooms
- Semi Detached
- Ideal For Growing Family
- Drive And Garage
- Enclosed Rear Garden

- Living Room
- Dining Room
- Open Plan
- Popular Area



Welcome to this charming semi-detached property nestled in a quiet area, boasting comfort and convenience at every turn. As you approach, the eye-catching front lawn and driveway beckon you towards the single detached garage at the rear, promising ample parking and storage space.

Upon entering, you are greeted by an entrance hallway, where the staircase ahead guides you to the upper floor. To the left, the spacious living room invites you to unwind and relax, seamlessly flowing into the dining room, creating an ideal space for entertaining guests or enjoying family gatherings. Adjacent to the dining area lies the well-appointed kitchen, complete with matching wall and base units, offering both functionality and style. A convenient door leads from the kitchen to the back garden, perfect for al fresco dining or enjoying the fresh air.

Ascending the stairs, you'll find the thoughtfully designed bathroom directly ahead, featuring a modern three-piece suite including a double shower. To the left, the second bedroom awaits, boasting ample built-in storage space to neatly organize belongings. Continuing towards the front of the property, the main bedroom awaits, exuding comfort and tranquility, with its own set of built-in wardrobes offering practical storage solutions.

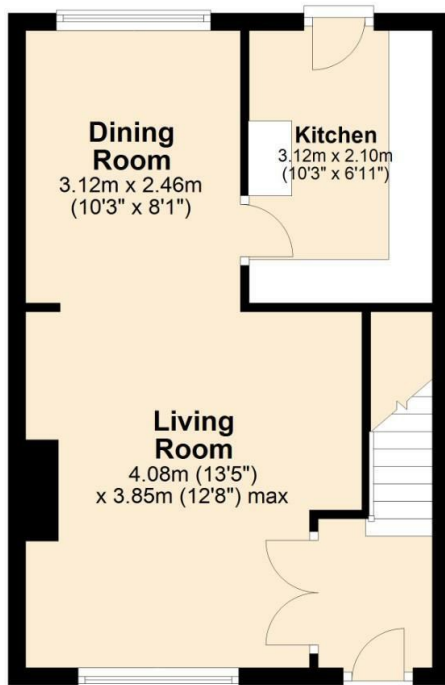
Completing the upper level is the versatile third bedroom, currently utilized as an office, offering flexibility to accommodate various lifestyle needs.

Outside, the back garden presents a delightful combination of lawn and stone flagging, providing a charming outdoor retreat to enjoy leisurely moments or host gatherings with loved ones.

In summary, this delightful property offers a harmonious blend of comfort, functionality, and style, providing the perfect backdrop for creating cherished memories and enjoying a fulfilling lifestyle. Don't miss the opportunity to make this your new home sweet home!

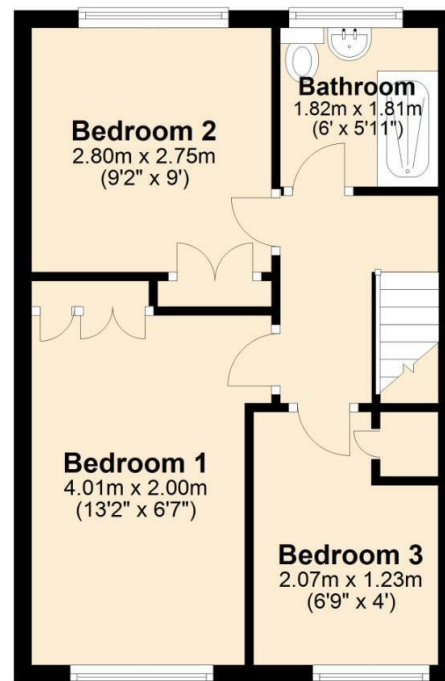
Ground Floor

Approx. 34.0 sq. metres (366.2 sq. feet)



First Floor

Approx. 30.9 sq. metres (333.1 sq. feet)



Total area: approx. 65.0 sq. metres (699.3 sq. feet)



These particulars, whilst believed to be accurate are set out as a general outline only for guidance and do not constitute any part of an offer or contract. Intending purchasers should not rely on them as statements of representation of fact, but must satisfy themselves by inspection or otherwise as to their accuracy. No person in this firm's employment has the authority to make or give any representation or warranty in respect of the property.

4 Manchester Road, Burnley, Lancashire, BB11 1HH

T.

Burnley.sales@pettyreal.co.uk burnley.lettings@pettyreal.co.uk
property.management@pettyreal.co.uk

www.pettyreal.co.uk