

Because life is

Petty
Real™

4 Greenwood Close
Burnley
BB11 4BF



For Sale

£165,000

- No Chain
- Semi Detached
- Three Bedrooms
- Spacious Living Room
- Kitchen Diner

- Back Garden
- Family Bathroom
- Master Bedroom with En-suite
- Tax Band - B
- EPC Rating - B



This charming three-bedroom semi-detached property, located within a relatively new estate, invites you to embrace a lifestyle of comfort and convenience.

As you arrive, you'll be greeted by the convenience of parking for two cars right at the side of the property, ensuring that coming home is always a breeze. Step inside, where a sense of warmth and tranquility envelops you.

The spacious living room offers the perfect setting for cozy gatherings or quiet evenings curled up with a good book. Natural light dances through the windows, illuminating the room and creating an inviting ambiance that feels like home from the moment you walk in.

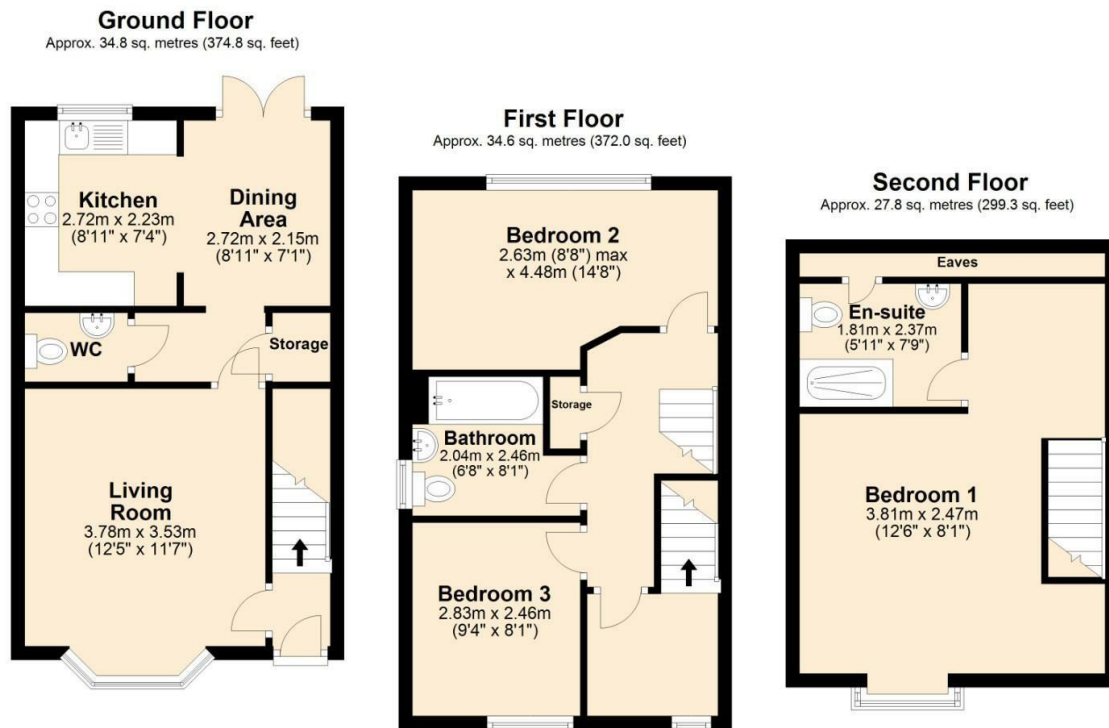
Prepare to be enchanted by the heart of the home – the kitchen diner. This versatile space is designed for both culinary adventures and memorable meals shared with loved ones. French doors beckon you to step outside and discover the enchanting rear garden, where lush greenery and fresh air await.

Ascending to the first floor, you'll find a well-appointed double bedroom, providing a serene retreat for restful nights and peaceful mornings. Adjacent, the family bathroom awaits, comprising a toilet, sink, and shower over the bath.

Completing the first floor is a charming single bedroom, perfect for a child's room, guest quarters, or a cozy home office – the possibilities are endless!

Venture up to the second floor, where the master bedroom awaits, promising luxurious comfort and privacy. Pamper yourself in the en-suite, boasting a walk-in shower, toilet, and sink – a sanctuary designed to elevate your everyday routine.

Embrace the essence of modern living in this delightful abode, where every detail is crafted with care and comfort in mind. With its ideal location and inviting atmosphere, this property offers not just a place to live, but a place to thrive. Come experience the joy of calling this house your home – schedule a viewing today and let the possibilities unfold!



Total area: approx. 97.2 sq. metres (1046.1 sq. feet)



These particulars, whilst believed to be accurate are set out as a general outline only for guidance and do not constitute any part of an offer or contract. Intending purchasers should not rely on them as statements of representation of fact, but must satisfy themselves by inspection or otherwise as to their accuracy. No person in this firm's employment has the authority to make or give any representation or warranty in respect of the property.

4 Manchester Road, Burnley, Lancashire, BB11 1HH

T.

burnley.sales@pettyreal.co.uk burnley.lettings@pettyreal.co.uk
property.management@pettyreal.co.uk

www.pettyreal.co.uk