

Because life is

Petty  
Real™

157 Manchester Road  
Hapton  
Burnley  
BB11 5RA



For Sale

Asking Price £199,000

- Near To Transport Links
- Three Bedroom
- Spacious Living Room
- Stunning Views & Countryside
- Semi Detached Property

- Driveway Parking
- Kitchen Extension
- Leasehold
- Bay Window
- Near To Local Schools



Welcome to Manchester Road Hapton, — a semi-detached property that seamlessly blends comfort, style, and breathtaking views. As you step through the small side porch, you are immediately embraced by a sense of warmth and charm that sets the tone for the entire residence.

The large living room beckons with a bay window that not only floods the space with natural light but also frames the outside world like a living masterpiece. Picture yourself nestled by the cozy gas fire, casting a gentle glow across the room as you gaze out at the stunning panoramic views that unfold before you. This room becomes a sanctuary, a place to unwind and connect with the beauty that surrounds your home.

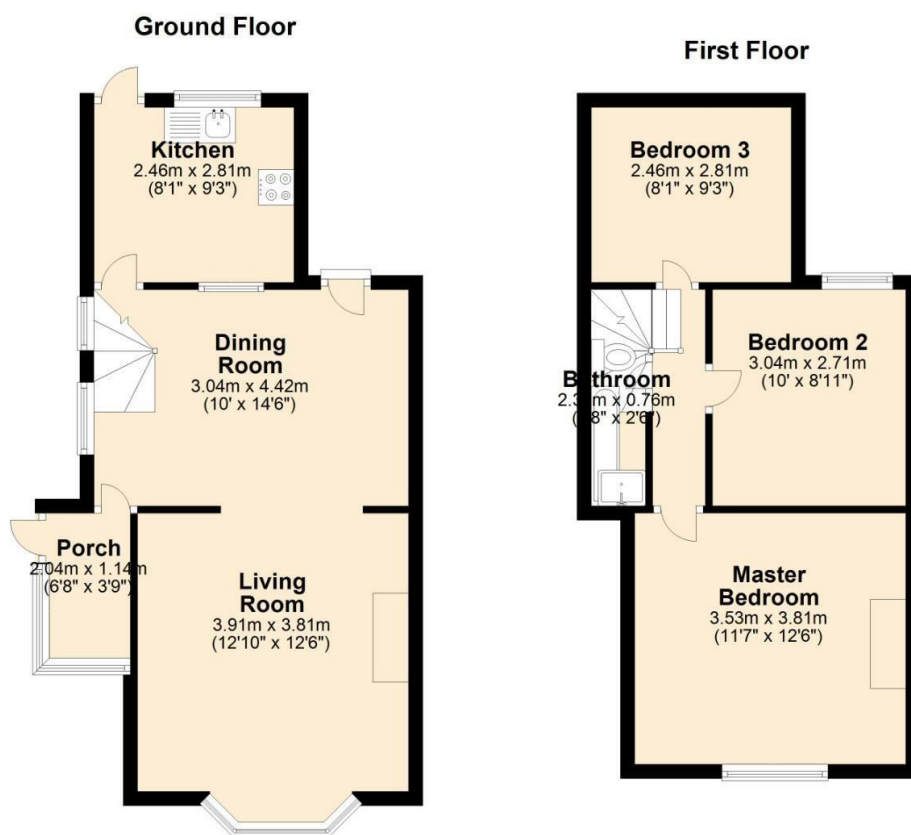
Moving seamlessly from the living room, you enter the dining room—a space that seamlessly connects indoor and outdoor living. A door at the back of the room leads you to the back garden.

The kitchen, is a delightful surprise with an extension at the rear of the property. Efficiently designed, it offers a practical yet stylish space where culinary delights are prepared while staying connected with the allure of the outdoor surroundings.

Venturing upstairs, bedroom three welcomes you as you ascend, a versatile space that could serve as a guest room or home & office. Opposite the stairs, bedroom two awaits, offering its own unique charm and functionality and the same as bedroom three this could serve as a guest room or home & office space.

As you traverse the landing, a well-appointed bathroom invites relaxation with a bath, sink, and toilet—a private sanctuary for self-care.

At the front of the property, the master bedroom awaits, providing ample space and a sanctuary of serenity. Open the curtains each morning to reveal not just a bedroom but a canvas of natural beauty. The window frames the stunning views, creating a picturesque backdrop that transforms your master suite into a haven of tranquility.



These particulars, whilst believed to be accurate are set out as a general outline only for guidance and do not constitute any part of an offer or contract. Intending purchasers should not rely on them as statements of representation of fact, but must satisfy themselves by inspection or otherwise as to their accuracy. No person in this firm's employment has the authority to make or give any representation or warranty in respect of the property.

4 Manchester Road, Burnley, Lancashire, BB11 1HH

T.

[burnley.sales@pettyreal.co.uk](mailto:burnley.sales@pettyreal.co.uk) [burnley.lettings@pettyreal.co.uk](mailto:burnley.lettings@pettyreal.co.uk)  
[property.management@pettyreal.co.uk](mailto:property.management@pettyreal.co.uk)

[www.pettyreal.co.uk](http://www.pettyreal.co.uk)