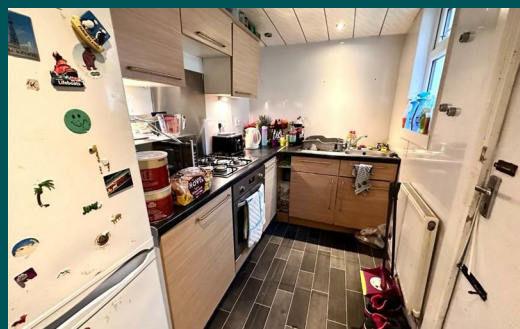
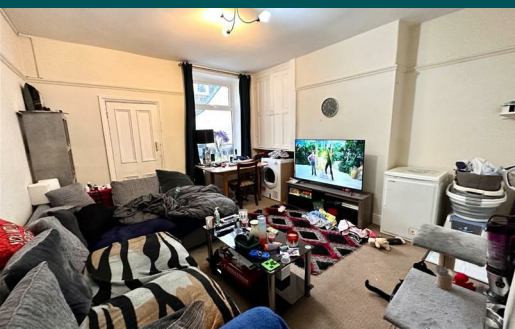


Because life is

Petty<sup>TM</sup>  
Real

53 Burnley Road  
Briercliffe  
BB10 2JF



For Sale

Asking Price £85,000

- Elevated terraced property
- Popular location in Harle Syke
- Two reception rooms
- Freehold
- Tenant in Situ

- Two double bedrooms
- Three piece bathroom
- Gas central heating
- Council tax band - A
- Tenant Paying £495PCM



Elevated, two-bedroom, terraced property situated in the ever-popular location in Harle Syke so ideally placed for all the local town centre amenities, schools, and bus routes. Tenant in situ paying £495 PCM.

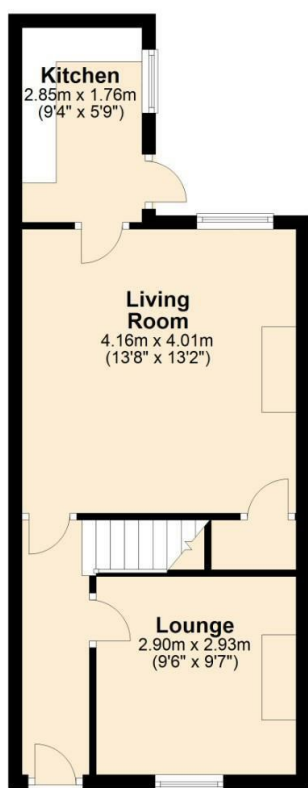
The accommodation comprises the ground floor lounge, dining room, and fitted kitchen with tiled floor, built-in oven and hob, a range of matching wall and base units with contrasting worktops and spotlights to ceiling.

On the first floor, there are two double bedrooms, one with fitted wardrobes, and a three-piece bathroom suite in white with a shower over.

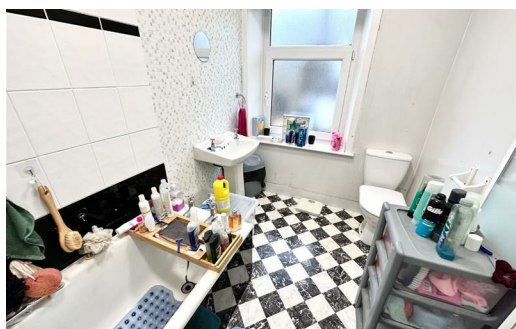
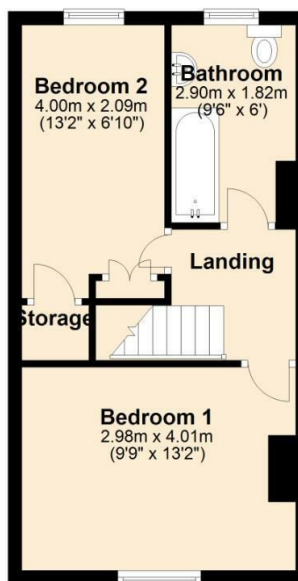
The property is further complemented by the modern-day comforts of gas central heating and double glazing and has neutral carpets and décor throughout.

Some renovation work is required at the property.

**Ground Floor**



**First Floor**



These particulars, whilst believed to be accurate are set out as a general outline only for guidance and do not constitute any part of an offer or contract. Intending purchasers should not rely on them as statements of representation of fact, but must satisfy themselves by inspection or otherwise as to their accuracy. No person in this firm's employment has the authority to make or give any representation or warranty in respect of the property.

4 Manchester Road, Burnley, Lancashire, BB11 1HH  
T.

[burnley.sales@pettyreal.co.uk](mailto:burnley.sales@pettyreal.co.uk) [burnley.lettings@pettyreal.co.uk](mailto:burnley.lettings@pettyreal.co.uk)  
[property.management@pettyreal.co.uk](mailto:property.management@pettyreal.co.uk)

[www.pettyreal.co.uk](http://www.pettyreal.co.uk)