





# 116 Lever House Lane

£220,000

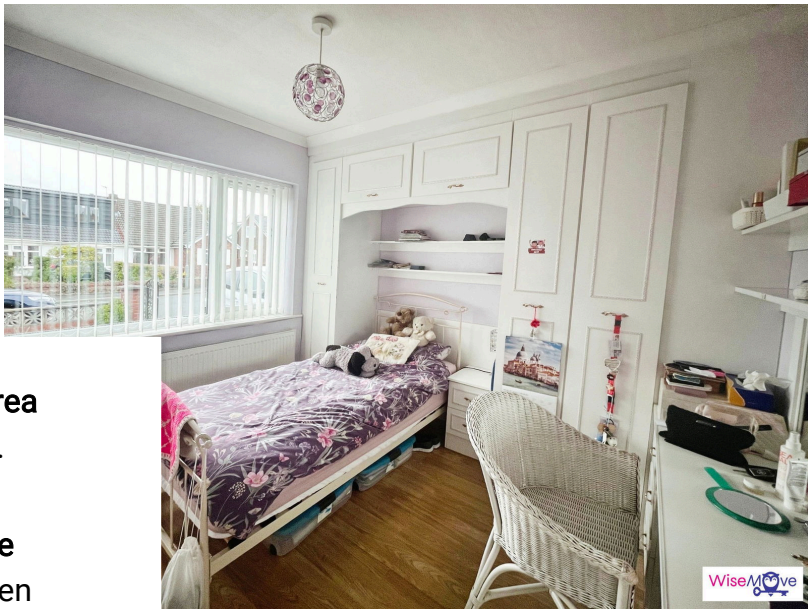
3 1



This beautiful, three bedroom semi detached home in a much sought after part of Farington. This property would make the ideal home, situated a short drive to Leyland town centre and its superb local shops, schools and amenities and has fantastic travel links to all nearby towns and cities via the M6 and M65 motorways. Viewing at earliest convenience is highly recommended to avoid any potential disappointment.







**Floor Area**  
sq. ft.

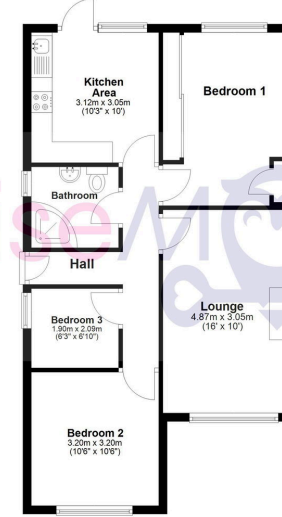
**Tenure**  
Not given

**Service Charge**  
£ per annum

**Ground Rent**  
£ per annum



**Ground Floor**  
Approx. 63.8 sq. metres (686.6 sq. feet)



Total area: approx. 63.8 sq. metres (686.6 sq. feet)



[hello@wise-move.co.uk](mailto:hello@wise-move.co.uk)

Company Number:- 14695463

[wise-move.co.uk](http://wise-move.co.uk)  
0151 424 3401

Agents Note: Whilst every care has been taken to prepare these sales particulars, they are for guidance purposes only. All measurements are approximate and for general guidance purposes only and whilst every care has been taken to ensure their accuracy, they should not be relied upon and potential buyers are advised to recheck the measurements