



WiseMove



53 Chedworth Road

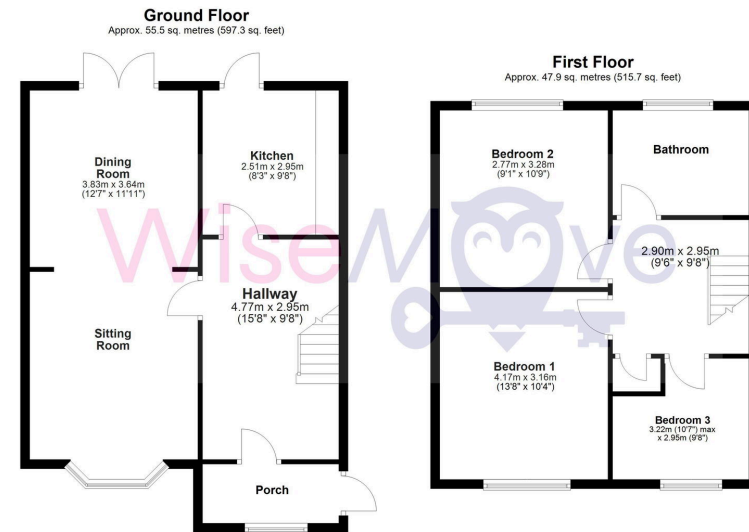
Offers In Region Of £160,000

3 1 2



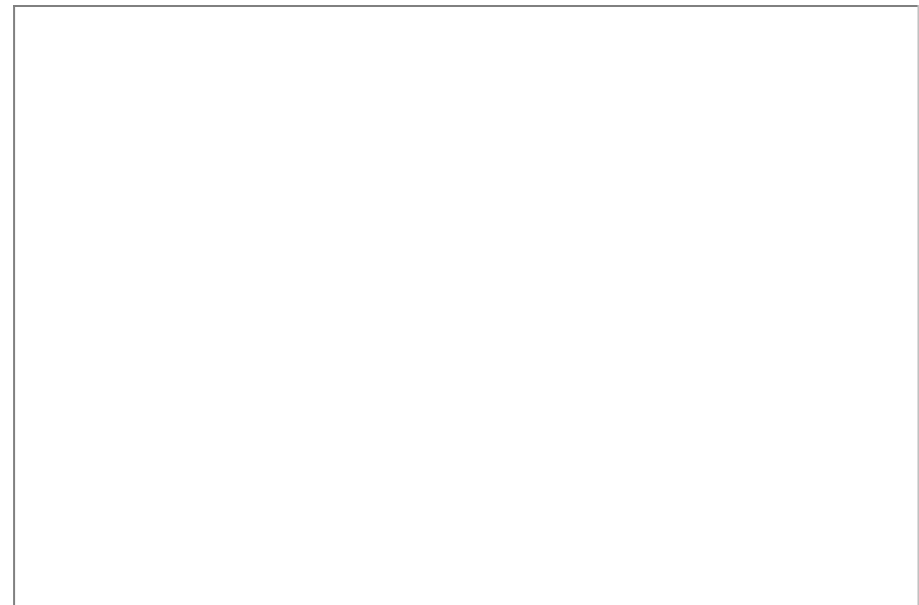
- Park views
- Brand New shower Room
- Driveway
- No chain
- Front and Rear Gardens
- Great Location





Total area: approx. 103.4 sq. metres (1112.9 sq. feet)

A perfectly positioned end terrace, situated within a popular residential location of L14 overlooking Dovecot park. It is very rare that properties like this in this location are brought to the market, Chedworth road is highly sought after within the local area.



hello@wise-move.co.uk

Company Number:- 14695463

wise-move.co.uk
0151 424 3401

Agents Note: Whilst every care has been taken to prepare these sales particulars, they are for guidance purposes only. All measurements are approximate and for general guidance purposes only and whilst every care has been taken to ensure their accuracy, they should not be relied upon and potential buyers are advised to recheck the measurements