



RED HOUSE  
ESTATE & LETTING AGENTS

PORTLAND - 01305 824455  
WEYMOUTH - 01305 824455



Channel View Road, Portland, Dorset, DT5 2AZ

£335,000

3 1 2





## Storm Porch

Door from front leads into the storm porch. Door to Kitchen

**Kitchen** - 3.66m x 3.48m (12'0" x 11'5")

Front aspect double glazed window. Range of wall and base units. Gas hob and electric oven with extractor over. Space for fridge freezer. Space and plumbing for washing machine.

## Inner Hall

Doors to all rooms. Access to loft.

**Living Room** - 3.66m x 3.96m (12'0" x 13'0")

Rear aspect patio doors. Fireplace with surround.

**Dining Room** - 3.96m x 3.51m (13'0" x 11'6")

Rear aspect patio doors into sun room.

## Sun Room

Windows and door opens into the rear garden.

**Bedroom One** - 3.53m x 4.01m (11'7" x 13'2")

Rear aspect windows.

**Bedroom Two** - 3.73m x 3.18m (12'3" x 10'5")

Front aspect window. Built in wardrobe

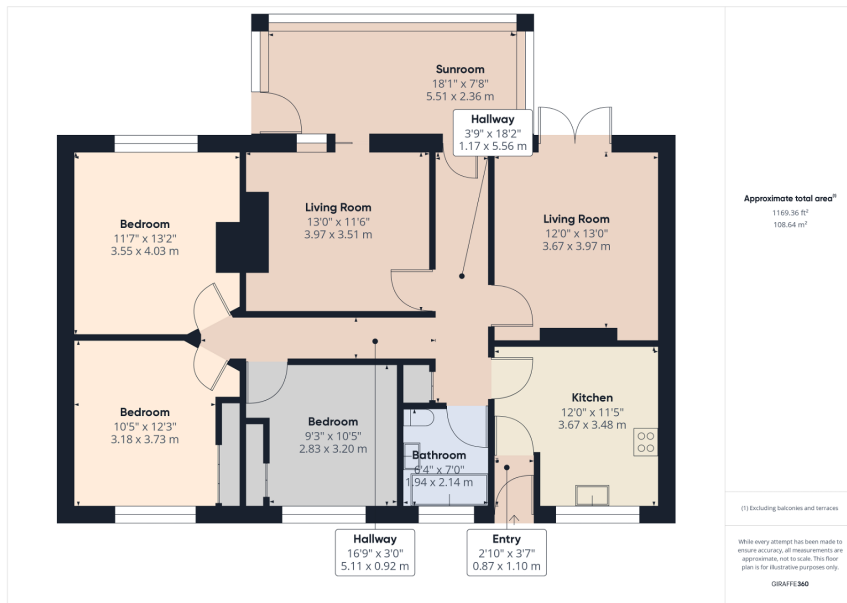
**Bedroom Three** - 3.18m x 2.82m (10'5" x 9'3")

Front aspect window. Storage cupboard.

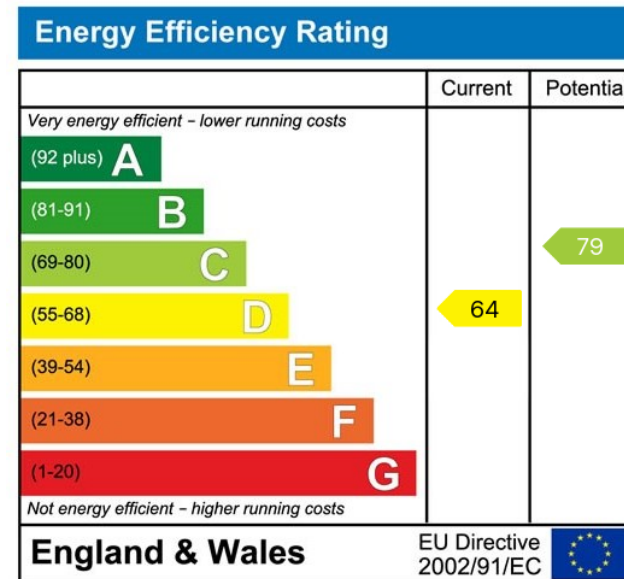
## Bathroom

Front aspect window. Bath with shower mixer taps. Wash hand basin and low level WC.





- Detached Bungalow
- Three Double Bedrooms
- EPC D
- Off Street Parking
- Three Reception Rooms
- Council Tax Band D



HEAD OFFICE  
89/91 Fortuneswell, Portland DT5 1LY

**IMPORTANT NOTE**

These particulars are for marketing purposes only and should not be treated as a statement of the condition of any building, fixture or appliances. All measurements are approximate and should not be relied upon. Purchasers should make their own checks before relying on any of the information provided herein.

[www.redhouseproperty.co.uk](http://www.redhouseproperty.co.uk)  
[www.redhouseproperty.tv](http://www.redhouseproperty.tv)