

7 Parkview Flats Easton Square, Portland

£700 PCM

Available End of July • Long Term Let • Top Floor Apartment • Close To Shops • Bus Routes Nearby • Spacious Accommodation • No Pets Allowed • Open Plan Living Area • Residents Parking Available • Isle Of Portland



Top floor one bed flat available end of July. Spacious open-plan living, large bedroom, modern bathroom. Close to amenities & bus routes. Long-term let, suits professionals or couples. No pets

Council Tax band: A

EPC Energy Efficiency Rating: E

EPC Environmental Impact Rating: F



- Available End of July
- Long Term Let
- Top Floor Apartment
- Close To Shops
- Bus Routes Nearby
- Spacious Accommodation
- No Pets Allowed
- Open Plan Living Area
- Residents Parking Available
- Isle Of Portland



Sitting Room

14' 4" x 10' 10" (4.37m x 3.30m)

14'4" x 10'10"

Kitchen

7' 4" x 6' 8" (2.24m x 2.03m)

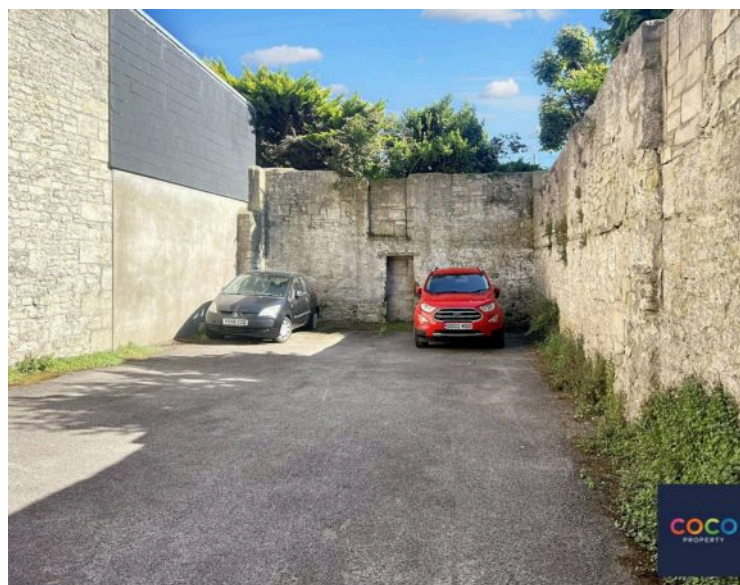
6'8" x 7'4"

Bedroom

12' 11" x 10' 8" (3.94m x 3.25m)

10'8" x 12'11"

Bathroom





TOTAL APPROX. FLOOR AREA 441 SQ.FT. (40.9 SQ.M.)

Whilst every attempt has been made to ensure the accuracy of the floor plan contained here, measurements of doors, windows, rooms and any other items are approximate and no responsibility is taken for any error, omission, or mis-statement. This plan is for illustrative purposes only and should be used as such by any prospective purchaser. The services, systems and appliances shown have not been tested and no guarantee as to their operability or efficiency can be given

Made with Metropix ©2016

You can include any text here. The text can be modified upon generating your brochure.