

## Flat 145, Atlantic House, 1 Ayton Drive

£1,100 pcm

Sea Views • Two Bathrooms • Balcony • Private Parking • Two Double Bedrooms • Long Term Let • Available End Of June • No Pets Allowed • Lift Access To All Floors • EPC Rating B

**COCO**  
PROPERTY



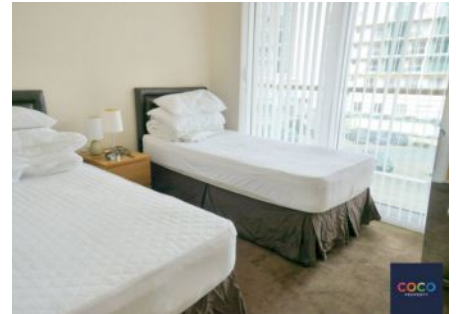


"Stylish 2-bed apartment with sea views on Isle of Portland. Open-plan living, balcony, modern kitchen, en-suite, allocated parking. Available end of June. No pets. Deposit required. Fees apply."

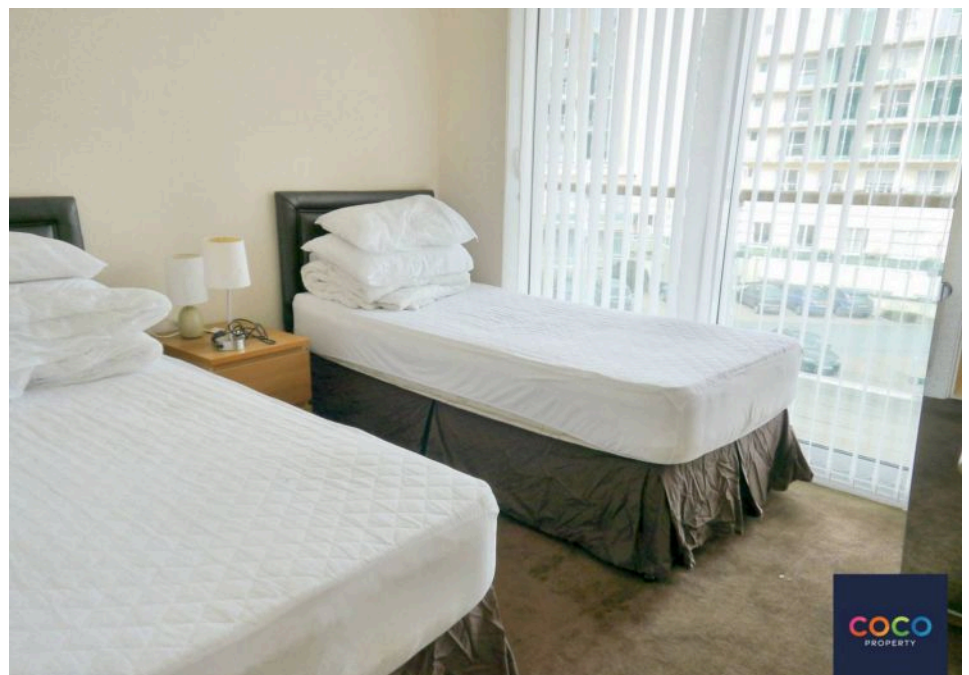
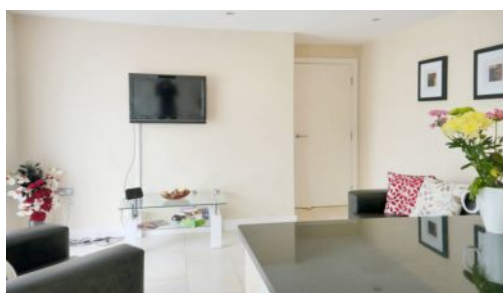
Council Tax band: D

EPC Energy Efficiency Rating: B

EPC Environmental Impact Rating: B



- Sea Views
- Two Bathrooms
- Balcony
- Private Parking
- Two Double Bedrooms
- Long Term Let
- Available End Of June
- No Pets Allowed
- Lift Access To All Floors
- EPC Rating B



**Sitting Room**

13' 4" x 9' 11" (4.06m x 3.02m)

**Kitchen/Diner**

13' 4" x 9' 11" (4.06m x 3.02m)

**Bedroom One**

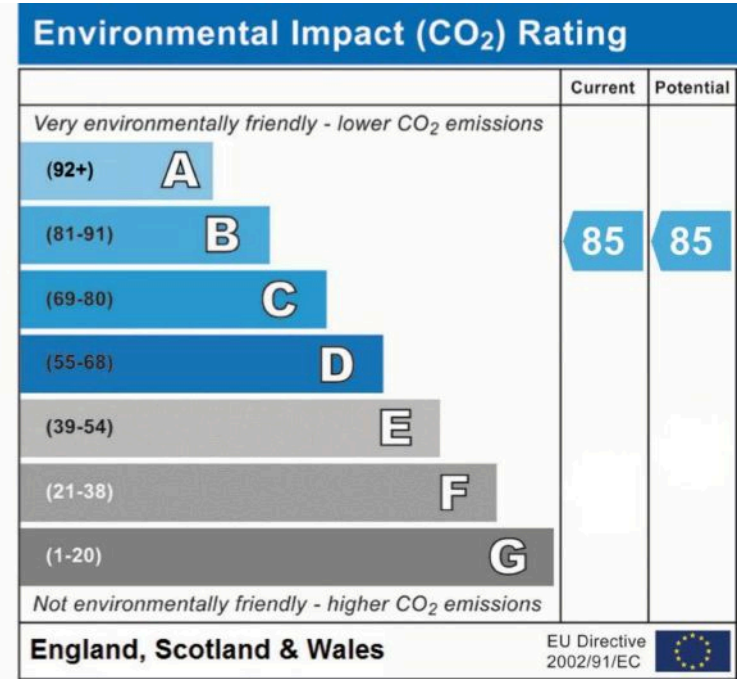
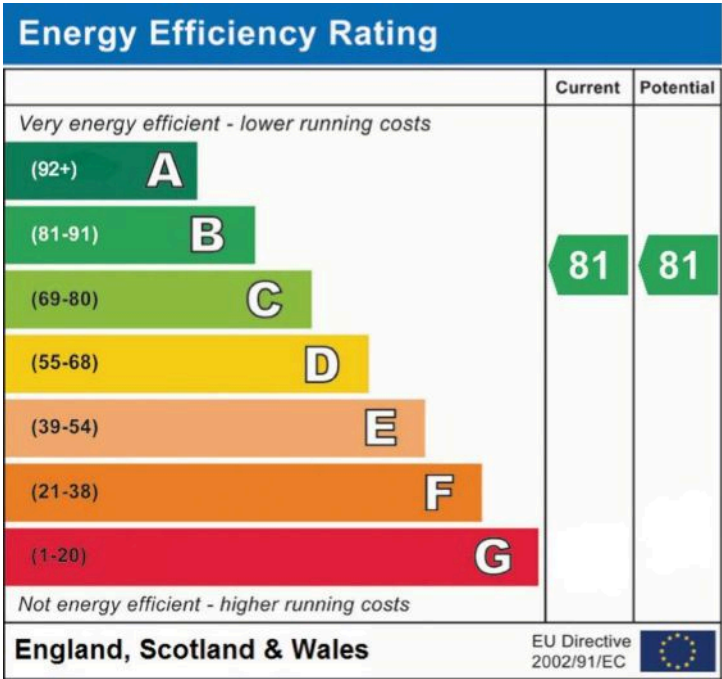
13' 4" x 9' 11" (4.06m x 3.02m)

**Bedroom Two**

9' 11" x 9' 1" (3.02m x 2.77m)

**En-Suite**

**Bathroom**







#### PORTLAND

Whilst every attempt has been made to ensure the accuracy of the floor plan contained here, measurements of doors, windows, rooms and any other items are approximate and no responsibility is taken for any error, omission, or mis-statement. This plan is for illustrative purposes only and should be used as such by any prospective purchaser. The services, systems and appliances shown have not been tested and no guarantee as to their operability or efficiency can be given.  
Made with Metropix ©2014

You can include any text here. The text can be modified upon generating your brochure.