

Disclaimer: These particulars are believed to be correct, but their accuracy is not guaranteed and they do not constitute an offer or contract. Strictly subject to contract, all measurements are approximate.
Agents Note: At no time have we undertaken a structural survey and services have not been tested. Interested parties should satisfy themselves to the structural integrity of the premises and condition / working order of services, plants and equipment.

FLOOR PLAN



26 Westbrook Court, 472 Christchurch Road
Bournemouth, BH1 4BD, £850 PCM

MAIN FEATURES

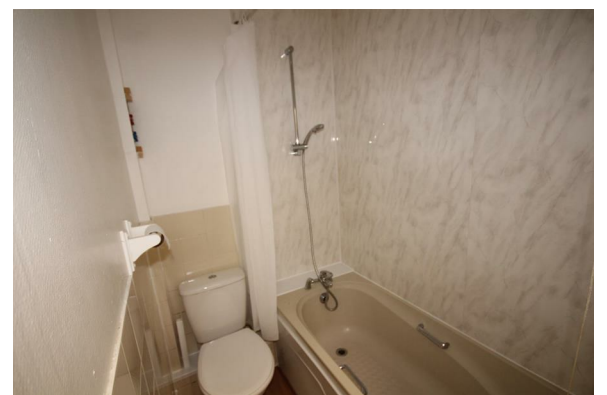
- One Double Bedroom
- Top Floor Flat
- Spacious Lounge
- Separate Kitchen
- Bathroom with Bath
- Tenants in receipt of Universal Credit Considered
- Close to Shops and Transport Links
- Close to the Local Beaches
- Tax Band A
- Available Immediately

Full description

Lovett International are delighted to share this one bedroom top floor flat with a spacious lounge, separate kitchen and bathroom with bath. The property benefits from electric heating, double glazing and secure intercom system. Conveniently located close to transport links for ease of access to Bournemouth Town Centre and within walking distance of local amenities. Available Immediately.



MORE @ [HTTPS://WWW.LOVETTINTERNATIONAL.COM](https://www.lovettinternational.com)



£850 PCM

Energy Efficiency Rating		Current	Potential
Very energy efficient - lower running costs			
(92 plus) A			
(81-91) B			76
(69-80) C			
(55-64) D		41	
(39-54) E			
(21-38) F			
(1-20) G			
Not energy efficient - higher running costs			
England & Wales		EU Directive 2002/91/EC	

