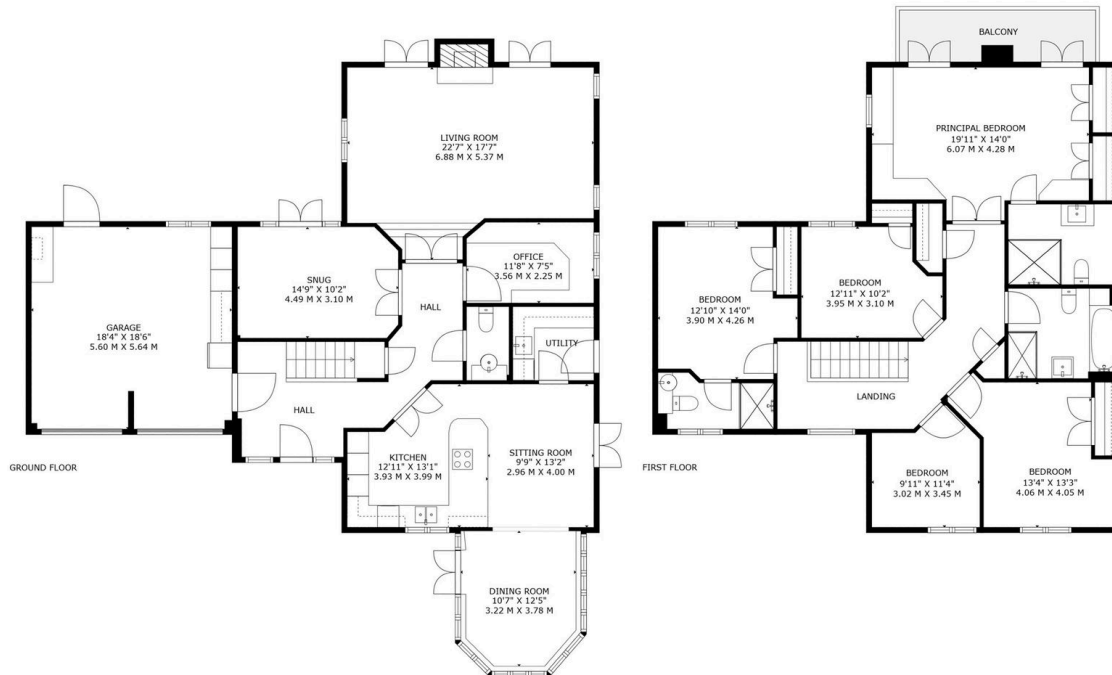


14 Donovan Drive,
Offers In Region Of £1,250,000

🛏 5 🚿 3 🚺 3



- Backs directly onto Sutton Park – A rare and exclusive setting offering instant access to nature.
- Grand living room with nearly 10ft ceilings – A stunning, light-filled space for relaxing and entertaining.
- Bespoke home office – Handcrafted wooden furniture, creating a stylish and functional workspace.
- Five spacious bedrooms, two with en-suites – Ideal for families and guests.
- Moments from Sutton Coldfield's best restaurants & leisure spots
- Gated development – Secure, private, and highly sought-after.
- Open-plan kitchen, dining & living area – Featuring high-end Neff appliances and a front garden aspect dining space.
- Master suite with balcony & en-suite – Two sets of French doors lead to a private outdoor retreat.
- South-West facing garden – Sunlit throughout the day, with seamless indoor-outdoor living.
- Excellent transport links – Close to Sutton Coldfield town centre & train station for easy access to Birmingham and beyond.



GROSS INTERNAL AREA: 2630 sq ft, 244 m²

BALCONY: 85 sq ft, 8 m²

GARAGE: 339 sq ft, 32 m²

OVERALL TOTALS: 3054 sq ft, 284 m²

SIZES AND DIMENSIONS ARE APPROXIMATE, ACTUAL MAY VARY
FLOORS MAY NOT BE SHOWN IN THEIR ACTUAL LOCATION



A rare opportunity to own a five-bedroom detached home backing directly onto Sutton Park—one of the most exclusive settings in Sutton Coldfield.

Set within a gated development, this home offers sophisticated living spaces, including an open-plan kitchen, dining, and living area with high-end Neff appliances and a front garden aspect dining space. A grand living room with nearly 10ft ceilings, a bespoke home office, and a versatile day room add to the elegance.

Upstairs, the master suite stuns with two sets of French doors leading to a private balcony, while two of the five bedrooms boast en-suites.

The South-West facing garden ensures all-day sun, with direct park access making it a true retreat.

With Browns Brasserie, The Bracebridge, Blackroot Bistro, Wyndley Leisure Centre, and Sutton Coldfield town & train station nearby, this is more than a home—it's a lifestyle.