





**59 Watchman Walk,**  
Offers Over £270,000

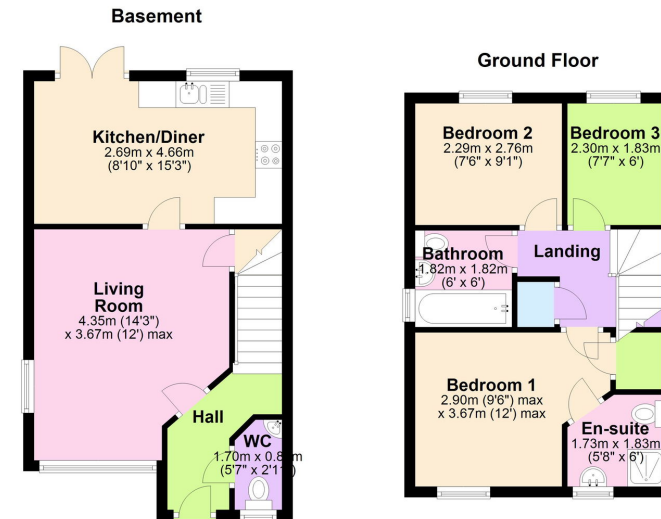
🛏 3 🚿 2 🚺 1



- Modern 3-Bedroom Semi-Detached Home
- Master Bedroom with En-Suite
- Off-Road Parking
- Excellent Transport Links
- Move-In Ready Built in 2020 with modern fittings and finishes.
- Open-Plan Kitchen and Dining Area
- Private South Westerly Rear Garden
- Proximity to Reputable Schools
- Nearby Amenities Shopping, dining, and healthcare facilities within easy reach.
- Offers Over £270,000 A valuable opportunity in a desirable location.







Introducing 59 Watchman Walk, Tamworth – a modern 3-bedroom semi-detached home offering comfort, convenience, and contemporary living. Situated in a sought-after area, this property is perfect for families, professionals, or anyone looking to settle in a vibrant community. With offers over £270,000, this is an opportunity not to be missed.

97

84