



60 Abbotsford Avenue, Great Barr

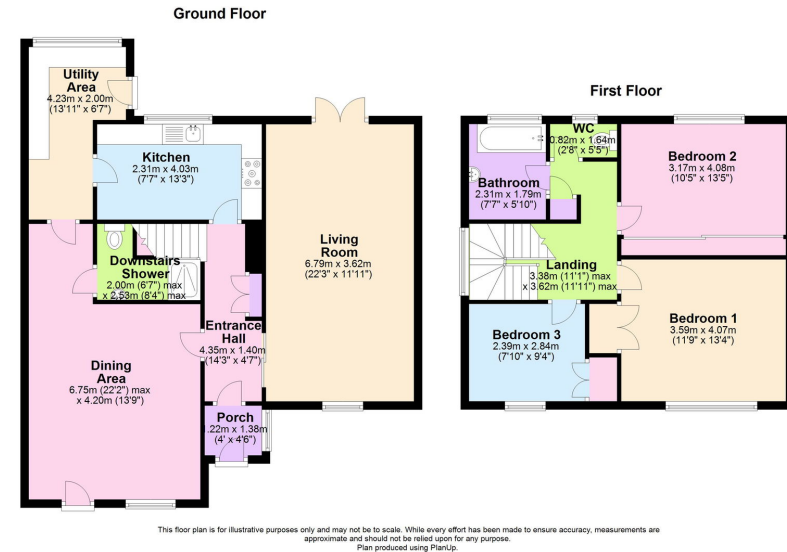
Offers In Region Of £325,000

🛏 3 🚿 2 🛋 2



- Three Double Bedrooms: Spacious and each with built-in wardrobes.
- Converted Garage: Ideal as a playroom, study, or additional living space.
- Downstairs Shower Room: Extra convenience for guests or family.
- Prime Location: Close to schools, Red House Park, and local amenities.
- Potential to Extend
- Two Large Reception Rooms: Flexible spaces for entertaining or family life.
- Functional Kitchen with Utility Room: Practical and well-suited for family needs.
- South-Facing Garden: Flat, sunny, and perfect for outdoor enjoyment.
- Direct Bus Access: Easy links to Birmingham, West Bromwich, Sutton Coldfield, and Walsall.





Discover 60 Abbotsford Avenue, Great Barr – a spacious 3-bedroom detached home with bags of potential and an enviable location. With two large reception rooms (thanks to a converted garage), a modern kitchen, and a sunny south-facing garden, this home is ready for its next chapter. Perfect for families or those looking to put their stamp on a property, this is a must-see.

