



Flat 6, Tyne Court, Park Road

Offers Over £180,000

2 1

Welcome to Flat 6, Tyne Court – a top-floor gem in the heart of Sutton Coldfield. Built in 1976, this two-bedroom apartment is a haven for first-time buyers or savvy investors. With no onward chain and a lease stretching to March 2152, it's an opportunity you don't want to miss. The property offers a spacious reception room, a well-sized kitchen, and a bathroom – all ready for you to personalise. Whether you're upgrading the kitchen or adding modern decor, the potential here is limitless. Just a few hundred meters from Sutton Park, the train station, and the town center, you'll enjoy a lifestyle of convenience and leisure. Gated communal parking adds to the appeal, and with two years of service charges covered by the current owner, this aggressively priced apartment is a steal. Fancy a blend of charm, practicality, and location? Flat 6 is calling your name.

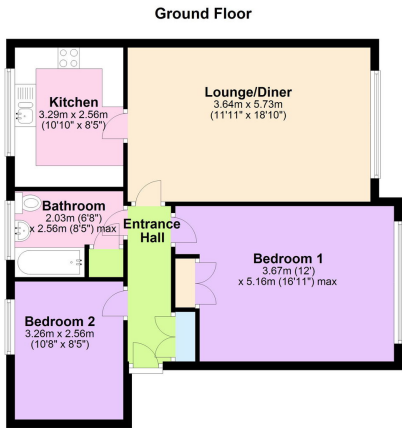


Floor Area: 775 Sq Ft sq. ft.

Tenure: Leasehold

Service Charge: £1782.55 per annum

Ground Rent: £0 per annum



This floor plan is for illustrative purposes only and may not be to scale. While every effort has been made to ensure accuracy, measurements are approximate and should not be relied upon for any purpose.
Plan produced using PlanUp.

