



Price

£1,250 PCM

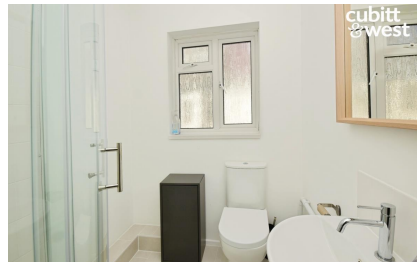
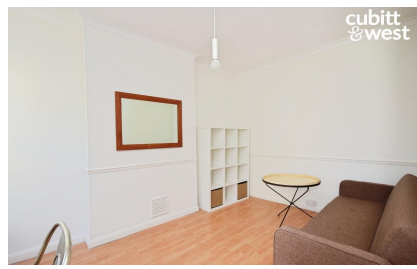
Fees Apply



Available 06/01/25

**Egmont Road Sutton
SM2**

cubitt&west
Helping you move forwards



Main Features

Double Glazed

Communal Garden

Close to Transport & Shops

Suit Couple

Gas Central Heating

No Deposit Option

Accommodation

Lounge 13'3" x 14'3"

Bedroom 11'1" x 11'6"

Kitchen 6'5" x 7'8"

Bathroom



Deposit required is £1,442.31
Sutton London - Council Tax Band Tax Band C

Renting a property is a big commitment and we recommend that you visit the local authority website and these websites which offer helpful information and advice about letting

www.gov.uk/government/publications/how-to-rent

www.gov.uk/private-renting

www.cubittandwest.co.uk/renting/tenancy-fees-individuals/

www.gov.uk/green-deal-energy-saving-measures

Call Sutton 020 86426266 ■ cubittandwest.co.uk

IMPORTANT INFORMATION: Please contact our Lettings Team who will confirm the total costs involved in renting this property. For clarification, we wish to inform the prospective tenant that we have prepared these details as a general guide. The agent has not carried out a detailed survey nor tested the services, appliances, or specific fittings (unless otherwise stated), and no warranty can be given as to their condition. All room measurements are taken at floor level. We strongly recommend that all the information which we provide about the property is verified by yourself and your advisers. The contents of this publication are © Cubitt & West, 2015. Cubitt & West is a trading name of Arun Estates Limited Registered in England No. 2597969

