



Bexley Gardens, London

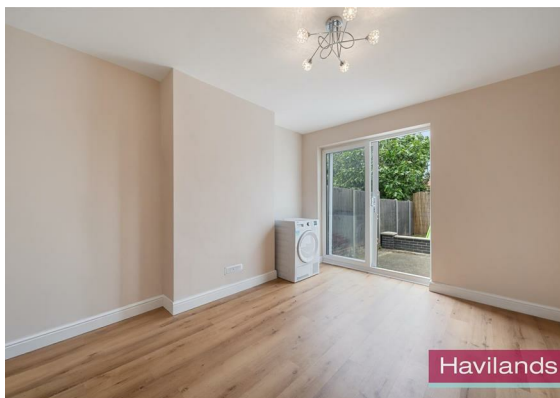
£525,000

Havilands

the advantage of experience



- Three Bedroom House
- Chain Free
- Potential to Extend (STPP).
- Within Catchment of Firs Farm & Hazelbury Primary Schools
- Within Catchment of Latymer & Winchmore Schools
- Approx 25 min walk to Silver Street & Edmonton Green Stations (Liverpool St approx 25 mins)
- Ease of Access to A10 & A406
- Local Shops & Amenities Nearby





Havilands



Havilands



Havilands



Havilands

Havilands are pleased to offer For Sale on a CHAIN FREE basis, this THREE BEDROOM HOUSE located on Bexley Gardens, N9. Offering around 950sqft of living space, the property has been well kept and is comprised of: Three Bedrooms, Family Bathroom, Two Reception Rooms and Kitchen. The house also offers potential to extend (STPP) to the rear and into the loft, with the potential to add off-street parking.

An ideal family home, the property is within the catchment area of good local schools including Firs Farm Primary & Hazelbury Primary Schools. The property also falls within catchment of sought after secondary schools including Latymer & Winchmore Schools. The property is well placed for commuters, offering excellent access to both the A10 & A406 offering routes into central London and across the wider Borough. Both Edmonton Green & Silver Street Stations are an approx 25 minute walk away, both offering direct rail links to central London (Liverpool St approx 25 mins).

The property is within easy reach of green space with Firs Farm Wetlands and Playing Fields & Pymmes Park both a short walk from the property. Shopping and leisure amenities are within easy reach too with a number of local shops on Kendal Parade & Hedge Lane, Viewing is highly recommended - to arrange yours, please get in touch.

Property Information:

Tenure: Freehold

Local Authority: Enfield Borough

Council Tax: Band D (£2164.02 25/26)

EPC Rating: Awaiting

For more images of this property please visit havilands.co.uk

havilands | 020 8886 6262
come by and meet the team
30 The Green, Winchmore Hill, London, N21 1AY

