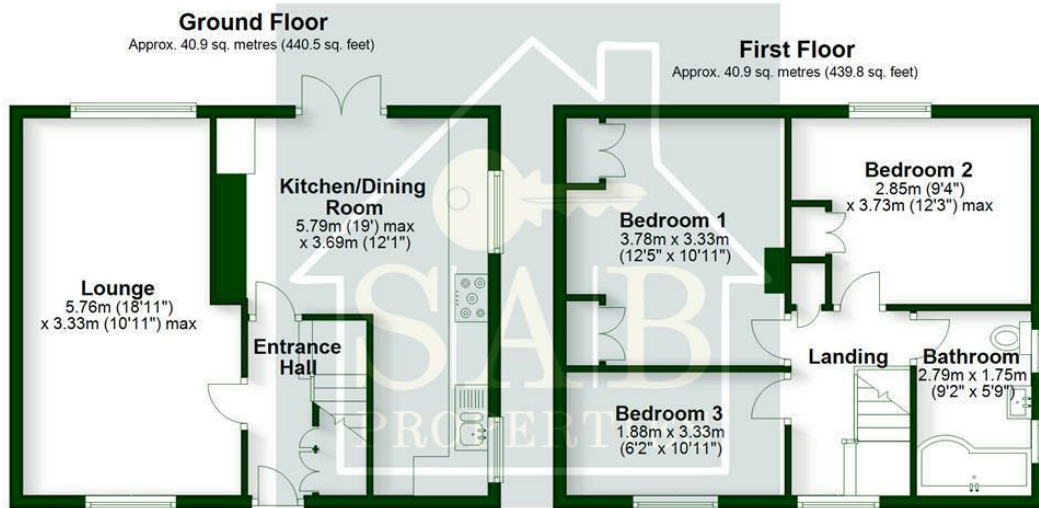




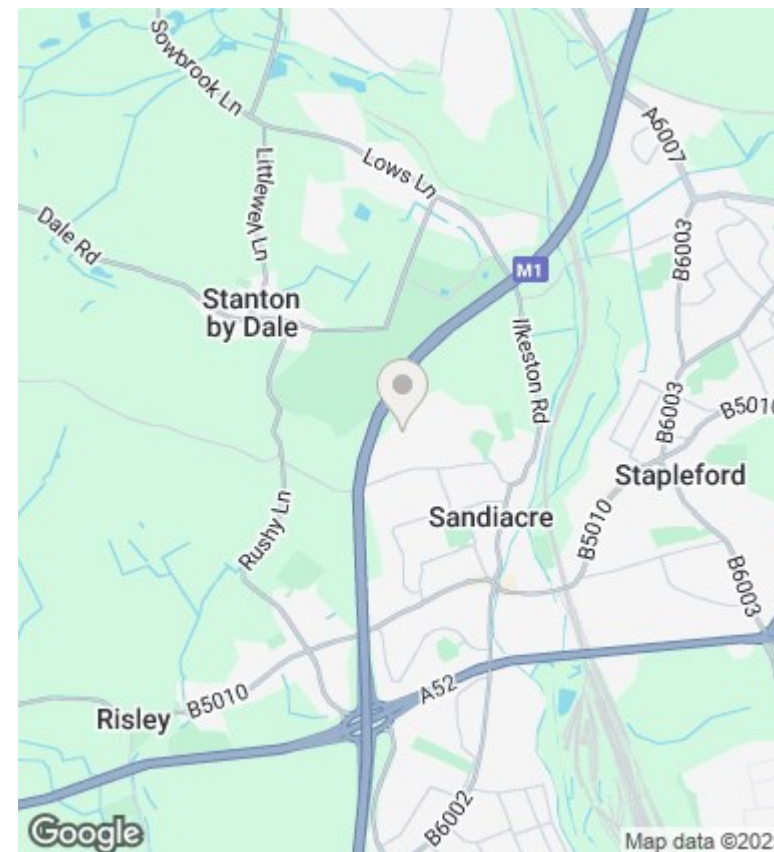
65 Sycamore Crescent, Sandiacre, Nottingham, NG10 5EY

£1,200

- 3 bedroom semi-detached house
- Modern bathroom Suite with shower over bath
- Generous-Sized Private Enclosed Garden
- Modern kitchen with integrated cooking facilities, dishwasher and washing machine
- Gas central heating and combi boiler
- Excellent transport links to Nottingham, Derby and East Midlands Airport
- Spacious Lounge
- 2 Double bedrooms and 1 single bedroom
- Council Tax Band = A



Total area: approx. 81.8 sq. metres (880.4 sq. feet)



Directions

Viewings

Viewings by arrangement only. Call 0115 6713038 to make an appointment.

Council Tax Band

A

EPC Rating:

D

Energy Efficiency Rating		Current	Potential
<i>Very energy efficient - lower running costs</i>			
(92 plus)	A		
(81-91)	B		
(69-80)	C		75
(55-68)	D	62	
(39-54)	E		
(21-38)	F		
(1-20)	G		
<i>Not energy efficient - higher running costs</i>			
England & Wales		EU Directive 2002/91/EC	