

ChaseBuchanan



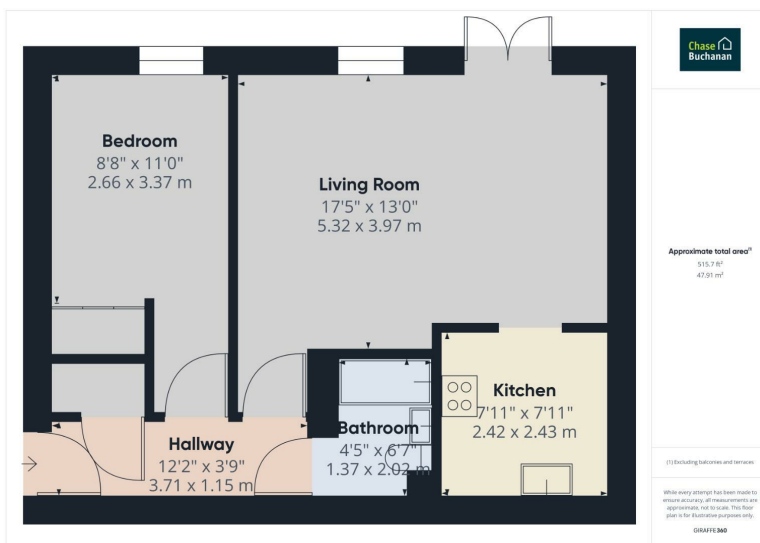
ChaseBuchanan

## Gras Lawn, EXETER £850 PCM

▪ GROUND FLOOR APARTMENT ▪ CLOSE TO RD&E & NUFFIELD HOSPITALS ▪ LIVING/DINING ROOM ▪ KITCHEN WITH WHITE GOODS ▪ BATHROOM ▪ DOUBLE BEDROOM ▪ AVAILABLE IN JULY ▪ PRIVATE PATIO AREA & ALLOCATED PARKING SPACE ▪ COUNCIL TAX=D EPC=C ▪ DEPOSIT PAYABLE £980.76 , HOLDING FEE PAYABLE £196.15

Ground Floor apartment situated in the popular residential location of St Leonards. The property comprises of an entrance hall with storage cupboard, living/dining room, fitted kitchen with integrated appliances, double bedroom and a bathroom with shower over the bath. The property benefits from a patio area and an allocated parking space. The property is available in July on an unfurnished basis. Council Tax=D. EPC=C.

This property has an energy performance rating of C



For more information or to book a viewing, please contact:

**01392 259395**

Exeter@chasebuchanan.co.uk  
20 Queen Street, Exeter, Devon, EX4 3SN

**ChaseBuchanan**