

ChaseBuchanan



360°

ChaseBuchanan

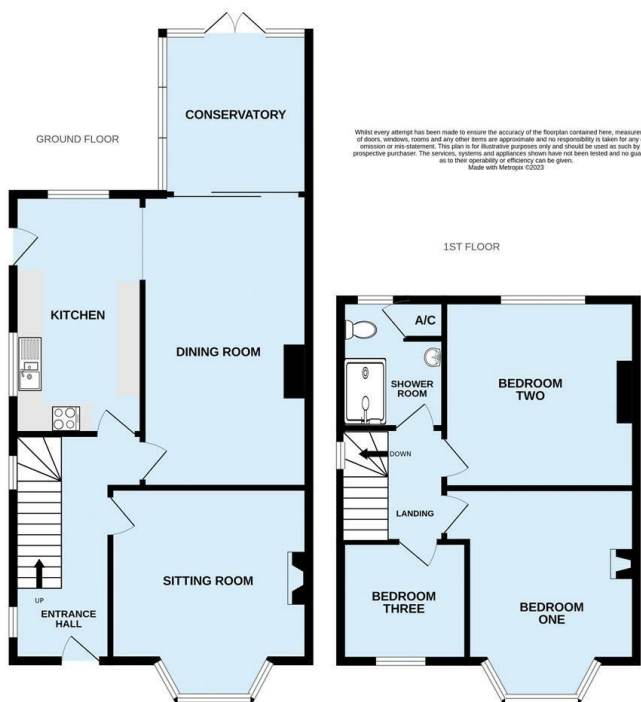
## Exminster, Exeter Guide Price £375,000

▪ A SPACIOUS SEMI-DETACHED FAMILY HOME ▪ SITUATED IN THE POPULAR VILLAGE OF EXMINSTER ▪ THREE BEDROOMS INCLUDING TWO LARGE DOUBLES ▪ SITTING ROOM, DINING ROOM AND CONSERVATORY ▪ KITCHEN & SHOWER ROOM ▪ LARGE REAR GARDEN WITH OUTBUILDINGS ▪ OFF STREET PARKING FOR UP TO FOUR VEHICLES ▪ NO ONWARD CHAIN ▪ COUNCIL TAX BAND 'D' EPC = ORDERED ▪ REFERENCE REF: DWFF07834

\*\*\*Guide Price £375,000 - £400,000\*\*\*

A fantastic opportunity to acquire a spacious family home, situated in a popular village location. The property is in need of minor modernisation throughout but has three bedrooms, three reception rooms including a conservatory plus a kitchen, bathroom and a large garden. The property also has plenty of parking and is viewing is highly recommended.

This property has an energy performance rating of



For more information or to book a viewing, please contact:

**01392 259395**

20 Queen Street, Exeter, Devon, EX4 3SN

**ChaseBuchanan**