



Coldharbour Lane, SW9
£550,000

0208 702 9555
pedderproperty.com

pedder



In general

- Large reception/kitchen/dining room
- Immaculately presented
- Integrated appliances in kitchen
- 2 double bedrooms, 2 bathrooms
- Private roof terrace
- Gated development
- Close to transport links

In detail

An opportunity to purchase this 2, double bedroom, 2 bathroom first floor flat set just off Coldharbour Lane, SW9, one of only 9 private apartments completed in 2017.

The property is immaculately presented throughout, with large double glazed windows, attractive wooden flooring throughout the whole of the 24 ft x 23 ft kitchen/dining/reception area. The reception affords plenty of natural light, there is ample room for a large dining table & chairs, and the kitchen area offers a vast range of modern wall & base units with solid wooden work surfaces and fully integrated appliances. There is a deep storage cupboard within the entrance hall. The principal bedroom has a floor to ceiling window & door leading to a private Westerly aspect roof terrace, and there is a stylish en-suite shower room. There is a second double bedroom and a modern bathroom.

Coldharbour Lane offers a vast array of shopping amenities, Loughborough Junction Thameslink and a short walk to the Victoria line and Denmark Hill overground, and several bus routes traverse the local roads. The London terminals and London airport is also easily accessible. The delights of Ruskin Park are nearby with its sports pitches, outdoor gym, and open spaces loved by dog walkers & joggers. Brixton centre is accessible by road with its eclectic range of restaurant & shopping amenities, railway station & tube, and the popular Ritzy Cinema together with a short walk to 2 quiet gyms.

Early viewings of this highly desirable property are highly recommended.

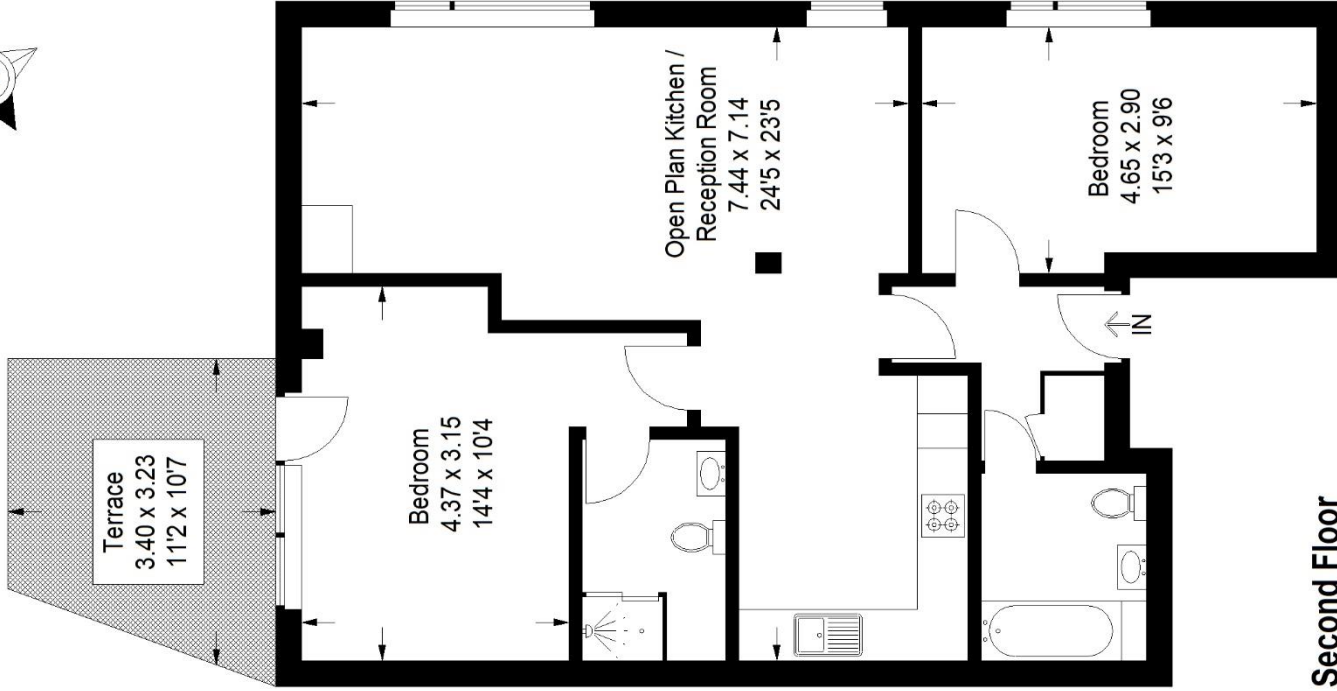
EPC: B | Council Tax Band: A | Lease: 93 years remaining | SC: £4,004 pa | GR: £450 pa | Buildings Insurance: included in SC



Floorplan

Coldharbour Lane, SW9

Approximate Gross Internal Area
78.5 sq m / 845 sq ft



Second Floor

Copyright www.pedderproperty.com © 2024

These plans are for representation purposes only as defined by RICS - Code of Measuring Practice. Not drawn to Scale. Windows and door openings are approximate. Please check all dimensions, shapes and compass bearings before making any decisions reliant upon them.

Score	Energy rating	Current	Potential
92+	A		
81-91	B	84 B	84 B
69-80	C		
55-68	D		
39-54	E		
21-38	F		
1-20	G		

Pedder Property Ltd trading as Pedder for themselves and for the vendor/landlord of this property whose agents they are, give notice that (1) these particulars do not constitute any part of an offer or contract, (2) all statements contained within these particulars are made without responsibility on the part of Pedder or the vendor/landlord, (3) whilst made in good faith, none of the statements contained within these particulars are to be relied upon as a statement of representation or fact, (4) any intending purchaser/tenant must satisfy him/herself by inspection or otherwise as to the correctness of each of the statements contained within these particulars, (5) the vendor/landlord does not make or give either Pedder or any person in their employment any authority to make or give representation or warranty whatsoever in relation to this property.