



Courtmead Close, SE24
£900,000

0208 702 9555
pedderproperty.com

pedder



In general

- Private development
- 3 bedroom Bungalow
- Well presented
- Garage connected to the property
- Close to transport links
- Freehold

In detail

A rare opportunity to purchase a 3 bedroom Bungalow set in Courtmead Close, a small private development, just off Burbage Road SE24.

The property is flooded with light throughout and the spacious L-shaped reception/dining room has full windows & a door to the paved, enclosed, private garden. The good-sized kitchen has a stylish range of wall & base units, built-in oven & hob, window & part glazed roof to side. The principal bedroom has a full wall of glazed windows overlooking the garden and built-in double wardrobe, there are 2 further bedrooms and a stylish shower room. The property benefits from being Freehold and having a single garage connected to the property.

Courtmead Close falls under the Dulwich Estate Scheme of Management who maintain the communal grounds.

Burbage Road is a sought after location, there is a Doctors Surgery next door, and local shopping & restaurant amenities are situated on Half Moon Lane. Herne Hill (Victoria, Thameslink, Blackfriars) and North Dulwich (Peckham Rye, London Bridge) railway stations are closeby and there is access to the vast expanse of Brockwell Park with its lido & cafe. Several bus routes traverse the area.

Early viewings are highly recommended.EPC: D | Council Tax Band: E



Floorplan

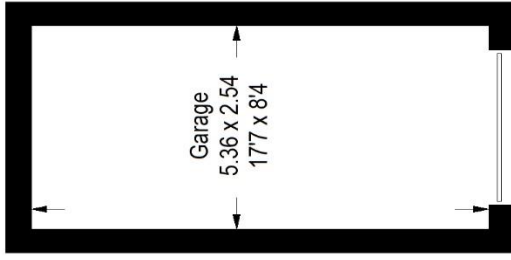
Courtmead Close, SE24

Approximate Gross Internal Area
(Excluding Outbuilding)

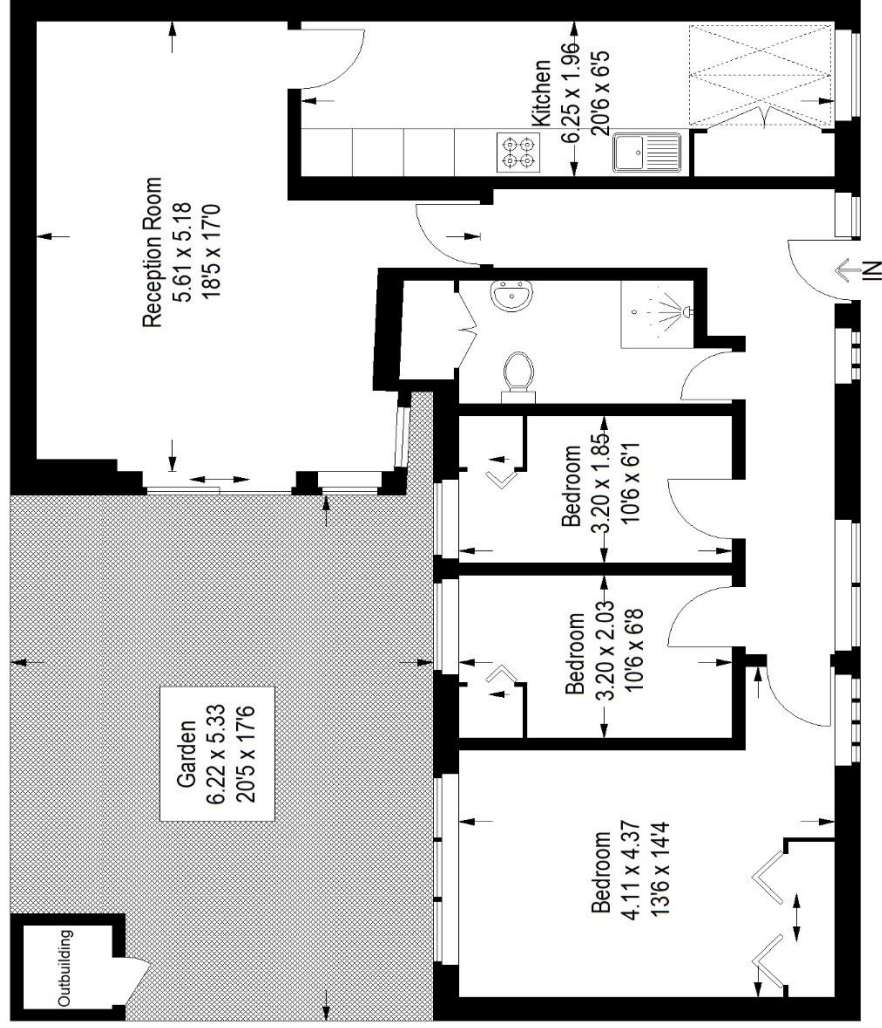
81.6 sq m / 878 sq ft

Garage = 13.8 sq m / 149 sq ft

Total = 95.4 sq m / 1027 sq ft



(Not Shown In Actual
Location / Orientation)



Ground Floor

Copyright www.pedderproperty.com © 2024

These plans are for representation purposes only as defined by RICS - Code of Measuring Practice. Not drawn to Scale. Windows and door openings are approximate. Please check all dimensions, shapes and compass bearings before making any decisions reliant upon them.



Pedder Property Ltd trading as Pedder for themselves and for the vendor/landlord of this property whose agents they are, give notice that (1) these particulars do not constitute any part of an offer or contract, (2) all statements contained within these particulars are made without responsibility on the part of Pedder or the vendor/landlord, (3) whilst made in good faith, none of the statements contained within these particulars are to be relied upon as a statement of representation or fact, (4) any intending purchaser/tenant must satisfy him/herself by inspection or otherwise as to the correctness of each of the statements contained within these particulars, (5) the vendor/landlord does not make or give either Pedder or any person in their employment any authority to make or give representation or warranty whatsoever in relation to this property.