



ELIVIA  
— HOMES —

# Willowbank Place

SEND VILLAGE

[WWW.ELIVIAHOMES.CO.UK](http://WWW.ELIVIAHOMES.CO.UK)

# E

A warm welcome to  
Willowbank Place, an outstanding  
collection of luxurious houses  
in the heart of Surrey



COMPUTER-GENERATED ARTIST'S IMPRESSION, INDICATIVE ONLY.

# H

WILLOWBANK PLACE - SEND VILLAGE

# Willowbank Place

SEND VILLAGE



Nestled in the beautiful Surrey countryside, Willowbank Place in the charming village of Send offers an exclusive collection of just 15 detached and terraced homes.

Perfectly placed, this prestigious semi-rural development offers so much more than a breath of fresh air! Here you can enjoy the leisurely pace of village life and all that the beautiful countryside has to offer, whilst being within easy reach of Woking and Guildford for all your urban lifestyle needs.

For those heading into London for work or leisure, the capital is a quick and easy commute from nearby Woking station.

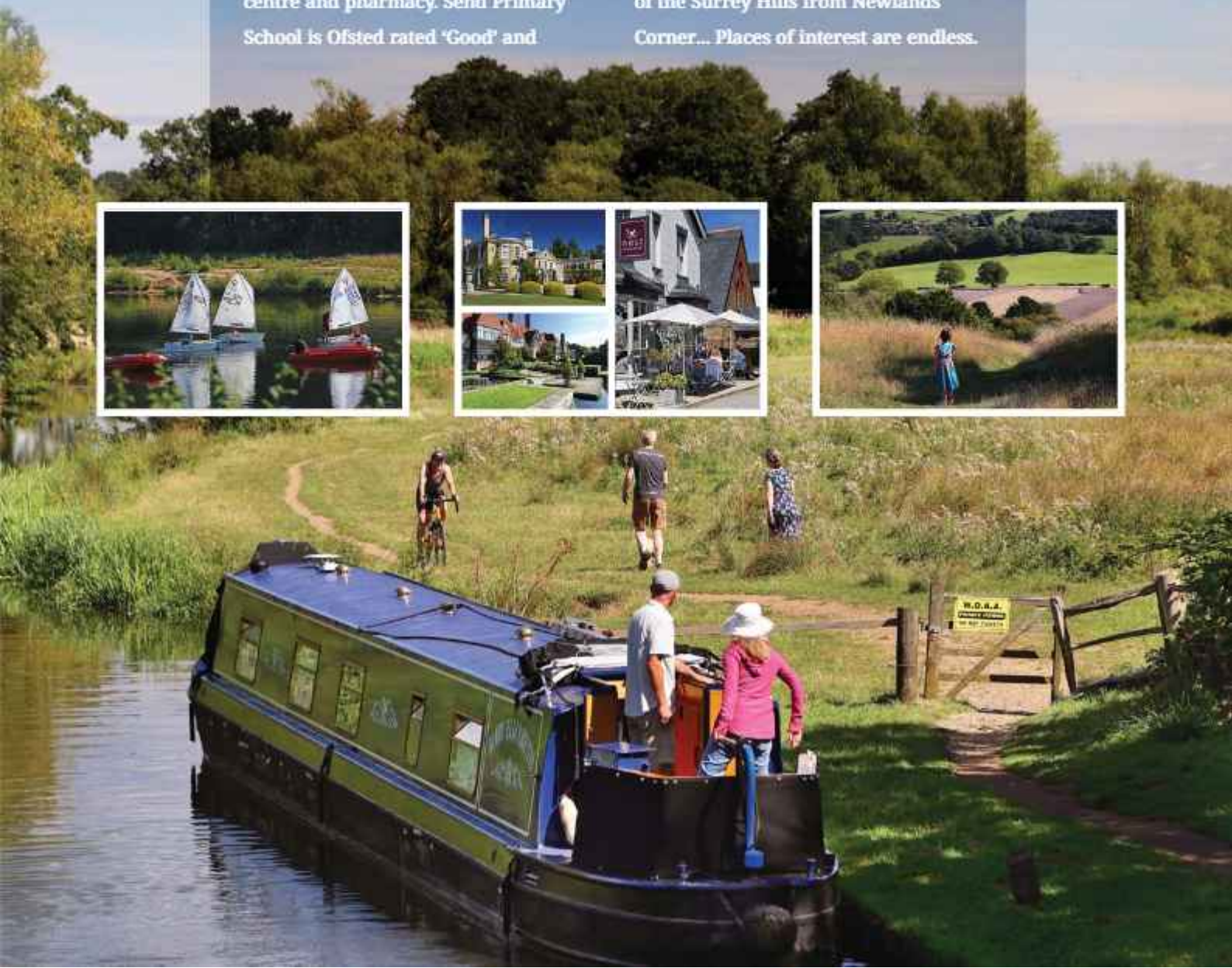
## Discover the joys of country living in the charming village of Send

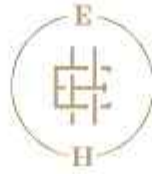
Enjoy a real sense of community in Send. Meet locals at family-friendly events at the Send Village Club, or visit the popular local pubs including the renowned Onslow Arms in nearby West Clandon. Sample fine dining at The Clock House in Ripley, or watch the world go by on the banks of the National Trust's Wey Navigations - just moments away near the The New Inn, or four locks down at The Anchor in Pyrford.

Everyday amenities include village shops, a Little Waitrose, a medical centre and pharmacy. Send Primary School is Ofsted rated 'Good' and

there is an excellent choice of highly regarded state and independent schools in the vicinity.

The great outdoors is yours to explore! Enjoy a towpath walk along the canal, or take to the water at Papercourt Sailing Club, join the local football or cricket club, or improve your game at one of many reputable golf clubs in the area. Explore the endless cycle trails, visit one of many National Trust houses, or simply relax in the nearby spectacular surroundings of RHS Garden Wisley. You can also enjoy breathtaking views of the Surrey Hills from Newlands Corner... Places of interest are endless.





# The vibrant town of Woking offers something for everyone, whilst the historic county town of Guildford is also within easy reach

Woking is a modern, thriving market town, which is home to an array of leisure and entertainment facilities. The extensive Victoria Place shopping centre, Market Walk food hall, New Victoria Theatre and Nova Cinema will certainly meet all your needs and more. Woking is also host to The Lightbox gallery and museum, whilst an eclectic choice of pubs, restaurants and eateries are located throughout the town centre. Nearby Woking Park is in fact a large leisure complex containing stunning landscaped walks, ponds, gardens, indoor swimming pools, water slides and wave pool, leisure centre, play areas and a selection of sports pitches and clubs.



From its mainline station, London Waterloo is as little as 26 minutes away with numerous journeys to the capital every hour during the day. Closer to Send, Clandon station also provides a regular stopping service to the capital.

Just a short drive away, Surrey's county town of Guildford is a truly desirable market town. Attractions include the castle, cathedral and the iconic cobbled High Street, with it's famous projecting Guildhall clock. Here you can meet friends at one of

the many cafés, pubs and highly rated restaurants. The town offers a host of boutiques, artisan shops, and popular weekly markets, plus world-class leisure, cultural and educational facilities.



## CONNECTING YOU TO A NEW LIFESTYLE

Willowbank Place enjoys excellent access to road and rail connections across the county and beyond. The A3 Ripley Interchange is moments away, leading south-west to Guildford and Portsmouth, and north-east to the M25 for major airports, motorway network beyond and central London. Woking station is just 3 miles by car, from where you can reach London Waterloo in 26 minutes - visiting the capital for work or leisure is a breeze.

### BY TRAIN

Guildford	10 mins
London Clapham Junction	19 mins
Basingstoke	20 mins
London Waterloo	26 mins
Southampton	50 mins
Portsmouth	63 mins

### BY CAR

Woking	8 mins
Guildford	12 mins
Heathrow Airport	29 mins
Gatwick Airport	37 mins
Portsmouth	50 mins
London Waterloo	54 mins
Southampton	67 mins



Solar panels are fitted to supplement your energy usage and will help reduce your energy costs. They capture the sun's energy and convert it into electricity to use in your home. This truly renewable and infinite energy source also means that carbon emissions are very low.



Impressive interiors include a superb range of contemporary design features, which enhance every part of your new home - from spacious layouts and sleek kitchens to stylish bathrooms and premium appliances, a high-specification finish is the Elivia standard. A host of practical considerations includes energy efficient gas boilers, downstairs underfloor heating and thoughtful storage areas. EV charging points, roof-installed solar PV arrays and cycle storage further enhance the development's green credentials.





Beautifully designed  
and finished down to  
every last detail

Throughout your home at Willowbank Place, you will find an exemplary, luxurious specification and finish. This reflects the Elivia ethos of selecting only trusted and high-performing brands, using trusted specialists and highly skilled craftsmen to complete your home. This means the home will not only be beautifully built, but will perform perfectly for generations to come.

# The highest quality design and craftsmanship, from foundation to finishing touches

Positioned on the north west fringes of Send, Willowbank Place is easily accessed off the main Send Road, which runs the length of the village. The development showcases the best of Elivia's craftsmanship and meticulous attention to detail - attractively planned home layouts boast a variety of contemporary exterior finishes. Warm red brick, which harmonises with the anthracite grey weatherboarding,

matching slate roofs and grey casement windows, combine to elevate the appeal of this modern, stylish development. Detached homes enjoy garaging and block-paved private driveways, whilst terraced homes each benefit from two allocated parking spaces. Generous settings, turfed gardens, landscaped exteriors and visitor parking further enhance both the practical and aesthetic appeal of Willowbank Place.

## NO.1

### THE NEWARK 4 BEDROOM HOME

Total Internal Living Area:  
167.7 sq m / 1,805 sq ft



## NO.2 / 3 / 4

### THE PAPER COURT 4 BEDROOM HOME

Total Internal Living Area:  
165.8 sq m / 1,785 sq ft



## NO.11 / 12 / 15

### THE BOWERS 4 BEDROOM HOME

Total Internal Living Area:  
145.9 sq m / 1,570 sq ft



## NO.9 / 10 / 13 / 14

### THE STOKE 3 BEDROOM HOME

Total Internal Living Area:  
103.8 sq m / 1,117 sq ft



## NO.20 / 23

### THE MILLMEAD 2 BEDROOM HOME

Total Internal Living Area:  
81 sq m / 872 sq ft



## NO.21 / 22

### THE CATTESHALL 2 BEDROOM HOME

Total Internal Living Area:  
No.21 - 81 sq m / 874 sq ft  
No.22 - 81.7 sq m / 879 sq ft







WILLOWBANK PLACE - SEND VILLAGE

GALILEO DRIVE



▶ Home Entrance

EXISTING PROPERTY

# The Newark

NO. 1

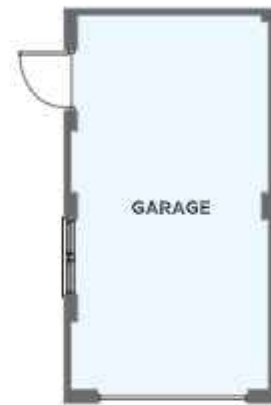


COMPUTER GENERATED ARTIST'S IMPRESSION AND INDICATIVE ONLY.

**A four bedroom detached house  
with separate garage**



TERRACE / GARDEN



See development plan for position

GROUND FLOOR



- Detached home over two levels
- Driveway parking with separate garage
- Spacious open-plan kitchen / dining area
- Separate study
- Four double bedrooms
- En suite and dressing area to bedroom 1
- Fitted wardrobes to bedroom 2
- Two sets of glazed double doors to terrace and garden
- Cycle store / shed



FIRST FLOOR

Total Internal Living Area: 167.7 sq m / 1,805 sq ft  
Not including garage

Kitchen	4.46m x 3.89m	14'8" x 12'9"	Bedroom 1	4.18m x 3.07m	13'9" x 10'1"
Dining Area	2.81m x 2.14m	9'3" x 7'1"	Bedroom 2	4.34m x 2.80m	14'3" x 9'2"
Living Room	8.06m x 3.89m	26'6" x 12'9"	Bedroom 3	4.10m x 2.88m	13'6" x 9'6"
Study	2.88m x 2.94m	9'6" x 9'8"	Bedroom 4	3.92m x 2.94m	12'10" x 9'8"

# The Papercourt

NO. 2 / 3 / 4

I



COMPUTER GENERATED ARTIST'S IMPRESSION AND INDICATIVE ONLY.

**A four bedroom detached house  
with integral garage**



II





- Detached home over two levels
- Driveway parking with integral garage
- Spacious open-plan kitchen / dining area with separate utility room
- Four double bedrooms
- En suite and fitted wardrobes to bedroom 1
- Cupboard storage to bedroom 2
- Two sets of glazed double doors to terrace and garden
- Attached cycle / refuse store





FIRST FLOOR

Total Internal Living Area: 165.8 sq m / 1,785 sq ft  
Not including garage

I

NO. 2

II

NO. 3 / 4 - with layout variation

Kitchen / Dining	7.16m x 4.62m	23'6" x 15'2"	Bedroom 1	5.22m x 3.09m	17'2" x 10'2"
Living Room	4.12m x 4.12m	13'7" x 13'7"	Bedroom 2	4.10m x 3.19m	13'6" x 10'6"
			Bedroom 3	3.79m x 3.09m	12'6" x 10'2"
			Bedroom 4	3.47m x 3.27m	11'5" x 10'9"

# The Bowers

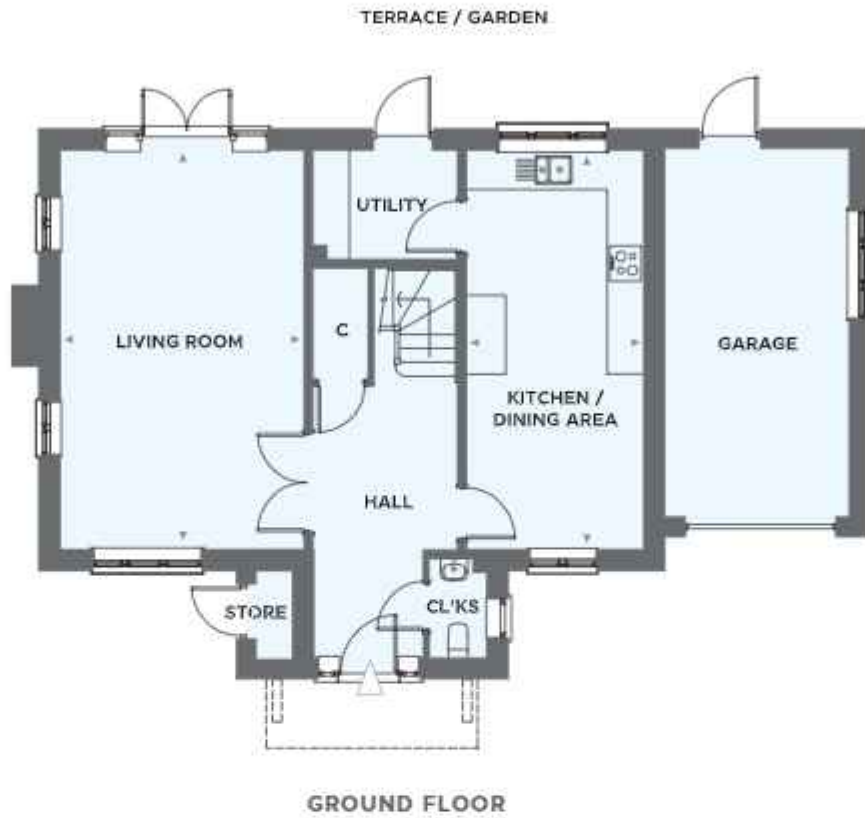
NO. 11 / 12 / 15



COMPUTER GENERATED ARTIST'S IMPRESSION AND INDICATIVE ONLY.

**A four bedroom detached house  
with integral garage**





- Detached home over two levels
- Driveway parking with integral garage
- Spacious open-plan kitchen / dining area with separate utility room
- Four double bedrooms
- En suite, fitted wardrobes and Juliette balcony to bedroom 1
- Two sets of glazed double doors to terrace and garden
- Cycle store / shed



FIRST FLOOR

Total Internal Living Area: 145.9 sq m / 1,570 sq ft  
Not including garage

NO.11 / 12 - mirrored layout  
NO.15 - as presented

Kitchen / Dining	6.59m x 2.92m	21'8" x 9'7"	Bedroom 1	4.21m x 4.07m	13'10" x 13'4"
Living Room	6.59m x 4.02m	21'8" x 13'3"	Bedroom 2	4.05m x 3.10m	13'4" x 10'2"
			Bedroom 3	3.78m x 3.49m	12'5" x 11'6"
			Bedroom 4	2.87m x 3.37m	9'5" x 11'1"

# The Stoke

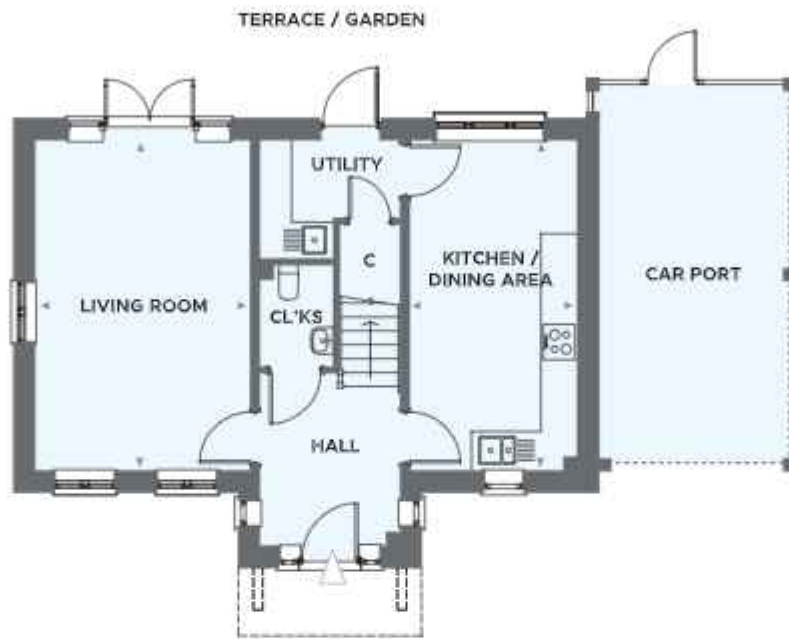
NO. 9 / 10 / 13 / 14



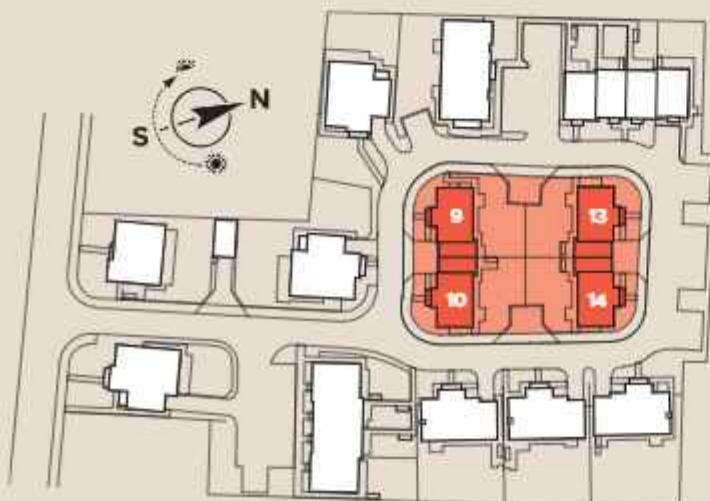
COMPUTER GENERATED ARTIST'S IMPRESSION AND INDICATIVE ONLY.

**A three bedroom detached house  
with attached car port**



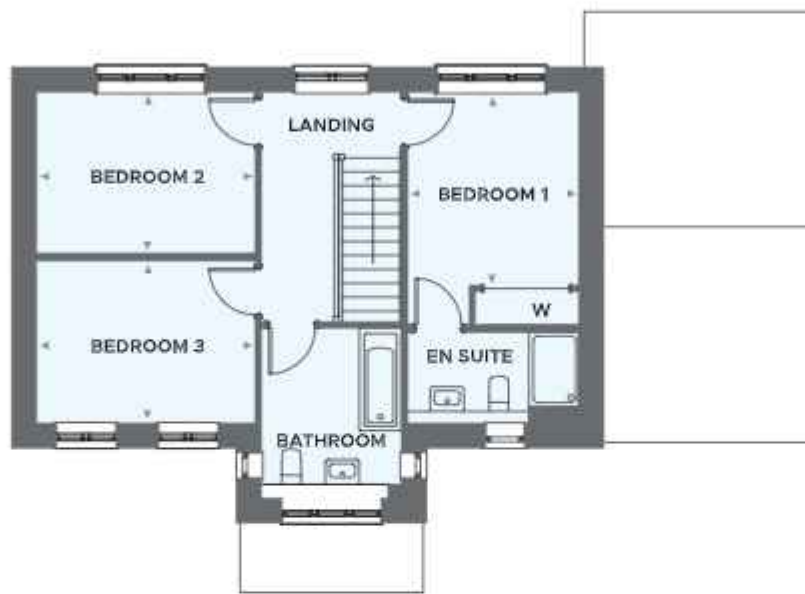


GROUND FLOOR



- Detached home over two levels
- Driveway parking with attached car port
- Additional separate parking
- Spacious open-plan kitchen / dining area with separate utility room
- En suite and fitted wardrobes to bedroom 1
- Glazed double doors to terrace and garden from living room
- Cycle store / shed





FIRST FLOOR

Total Internal Living Area: 103.8 sq m / 1,117 sq ft  
Not including car port

NO.9 / 14 - as presented  
NO.10 / 13 - mirrored layout

Kitchen / Dining	5.47m x 2.77m	18'0" x 9'1"	Bedroom 1	3.19m x 2.83m	10'6" x 9'4"
Living Room	5.47m X 3.56m	18'0" X 11'8"	Bedroom 2	3.61m x 2.66m	11'11" x 8'9"
			Bedroom 3	3.61m x 2.68m	11'11" x 8'10"

# The Millmead

NO. 20 / 23



COMPUTER GENERATED ARTIST'S IMPRESSION AND INDICATIVE ONLY.

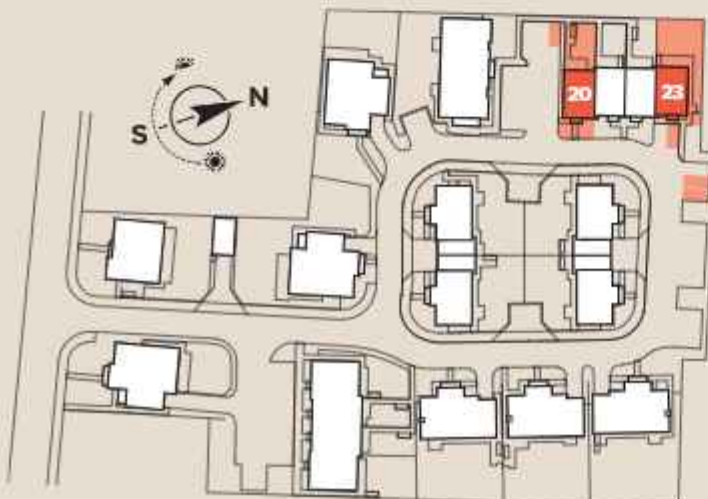
**A two bedroom end of terrace house  
with allocated parking**



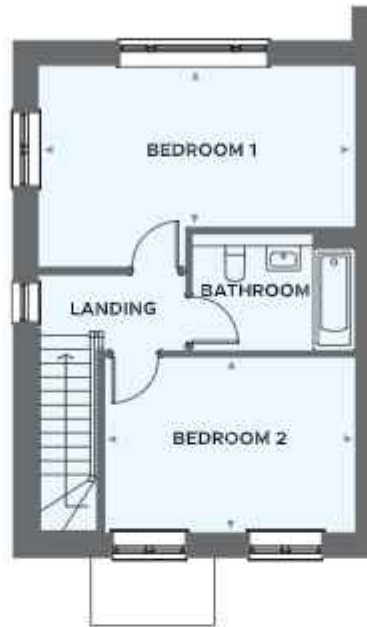
TERRACE / GARDEN



GROUND FLOOR



- End of terrace home over two levels
- Allocated parking for two cars
- Spacious open-plan kitchen / dining area that leads to the living room
- Two double bedrooms
- Glazed double doors to terrace and garden from living room
- Cycle store / shed



**FIRST FLOOR**

Total Internal Living Area: 81 sq m / 872 sq ft

**NO.20 - as presented**  
**NO.23 - mirrored layout**

Kitchen / Dining	4.29m x 2.57m	14'1" x 8'5"	Bedroom 1	5.24m x 2.70m	17'3" x 8'11"
Living Room	5.24m x 3.45m	17'3" x 11'4"	Bedroom 2	4.15m x 2.91m	13'8" x 9'7"

# The Catteshall

NO. 21 / 22



COMPUTER GENERATED ARTIST'S IMPRESSION AND INDICATIVE ONLY.

**A two bedroom mid terrace house  
with allocated parking**



TERRACE / GARDEN



GROUND FLOOR



- Mid terrace home over two levels
- Allocated parking for two cars
- Spacious open-plan kitchen / dining area that leads to the living room
- Two double bedrooms
- Glazed double doors to terrace and garden from living room
- Cycle store / shed





FIRST FLOOR

No.21 - Total Internal Living Area: 81 sq m / 874 sq ft  
 No.22 - Total Internal Living Area: 81.7 sq m / 879 sq ft

**NO.21 - as presented**  
**NO.22 - mirrored layout**

Kitchen / Dining	4.29m x 2.61m	14'1" x 8'7"	Bedroom 1	4.39m x 2.98m	14'5" x 9'9"
Living Room	5.26m x 3.43m	17'3" x 11'3"	Bedroom 2	4.15m x 3.23m	13'8" x 10'7"

WILLOWBANK PLACE - SEND VILLAGE



---

# The Specification

## KITCHEN

- Classically styled kitchen
- Quartz worktops and splash backs\*
- Electric, stainless steel double oven
- 4 burner induction hob and extractor cooker hood
- Integrated fridge/freezer
- Integrated dishwasher
- Integrated washing and drying machine (homes without utility)
- Stainless steel 1 ½ bowl sink
- Amtico flooring

## UTILITY†

- Plumbing, wiring and space for washing and drying machines
- Stainless steel bowl sink with mixer tap†
- Laminate worktops and splash back
- Amtico flooring

## BATHROOM & EN SUITE

- Modern styled bathrooms and en suites with chrome fixings and Roca sanitary ware
- Toilets with soft-close seats
- Mixer taps and controls in chrome
- Heated chrome towel rails (size dependent on layout)
- Chrome shower head with slide rail
- Clear glass sliding door shower screen and glass bath shower screen
- Ceramic wall tiles on selected areas, edges trimmed with brushed chrome strip
- Shaver socket
- Amtico flooring

## MEDIA & CONNECTIVITY

- Prewired for Sky Q service in the living room
- TV points to all bedrooms
- Telephone points in living room, hallway and bedroom 1
- USB charger point incorporated in socket within kitchen

## FINISHING DETAILS

- Modern style painted internal doors with chrome finish door furniture
- Carpeted, closed-tread, painted staircase with softwood hand rail
- Painted, three stepped architrave and skirting boards
- Fitted wardrobes shown in floor plans†
- Carpets to all principal rooms unless otherwise specified

## HEATING, ELECTRICAL & LIGHTING

- Energy efficient gas-fired heating with mains pressure hot water system and central programmer
- Underfloor heating to ground floor
- Radiators to first floor
- LED down lights in kitchen, utility, bathroom, en suite and cloakroom
- Pendant lighting in all other rooms
- External lights for all external doors
- External, weatherproof power socket
- Roof installed solar PV array to supplement energy supply

## EXTERNAL

- Electrical vehicle charging point
- Attached cycle store or separate cycle store / shed
- Landscaped front
- Turf in the rear garden
- Close board fencing around gardens
- External water tap

## GARAGE / CAR PORT†

- Separate garage to No.1
- Integral garage to No.2 - 3 - 4 - 11 - 12 - 15
- Attached car port to No.9 - 10 - 13 - 14
- Double power sockets and strip lighting (garages only)

## WARRANTY

- Q Assure Build 10 year warranty

† Selected homes only.

\*Colour choices available - subject to stage of construction.



*Award-winning  
customer service*  
that continues well  
beyond the sale



**In-house Research**  
has awarded Elvia Homes  
**'Gold'** two years running.  
92% of customers would  
recommend Elvia Homes  
to a friend or colleague.



# Elvia Homes: building better as standard since 2004

From the calibre of design and build standards to the care of our dedicated customer service team, our aim is to ensure finding, choosing, and buying your perfect home is the best experience it can be. What is more, you have the reassurance that Elvia Homes is a leading, independent house builder with a respected and established reputation for quality across the Home Counties.



WHAT HOUSE? AWARDS  
BRONZE WINNER 2023  
BEST MEDIUM HOUSEBUILDER



EVERING STANDARD  
NEW HOMES AWARDS WINNER 2023  
BEST FAMILY HOME



SOUTH EAST  
PROPERTY AWARDS WINNER 2023  
DEVELOPER OF THE YEAR



THE BUSINESS  
MAGAZINE  
THAMES VALLEY  
PROPERTY AWARDS  
2023  
THAMES VALLEY  
PROPERTY AWARDS WINNER 2023  
DEVELOPER OF THE YEAR



THE BUSINESS  
MAGAZINE  
South Coast  
Property Awards  
2023  
SOUTH COAST  
PROPERTY AWARDS WINNER 2023  
HOUSEBUILDER OF THE YEAR  
RESIDENTIAL DEVELOPMENT OF THE YEAR  
SUSTAINABLE DEVELOPMENT OF THE YEAR



SURREY PROPERTY  
AWARDS WINNER 2023  
BEST BOUTIQUE DEVELOPMENT



Protection for new-build home buyers



ALL PARTICULARS INCLUDING ILLUSTRATIONS, COMPUTER GENERATED IMAGES AND EXTERNAL SPACES ARE FOR GUIDANCE ONLY AND ARE CORRECT AT TIME OF PRINT. ELVIA HOMES IS UNDER NO OBLIGATIONS. ITEMS MAY CHANGE IN ACCORDANCE WITH PLANNING PERMISSIONS DURING VARIOUS CONSTRUCTION PHASES AS APPLICABLE. SPECIFICATION CHANGES ALONG WITH ALTERATIONS MAY HAVE BECOME NECESSARY SINCE PUBLICATION. THIS INFORMATION DOES NOT CONSTITUTE A CONTRACT IN FULL OR PART OF A WARRANTY. INTENDING PURCHASERS OR LESSEES MUST SATISFY THEMSELVES BY INSPECTION, MEASUREMENT OR OTHERWISE AS TO THE CORRECTNESS OF EACH OF THE STATEMENTS CONCERNING DIMENSIONS CONTAINED WITHIN THESE PARTICULARS. TRAVEL TIMES AND DISTANCES ARE APPROXIMATE ONLY.

# Willowbank Place

SEND VILLAGE

Willowbank Place, Send Road,  
Send, Surrey. GU23 7ER

07399 405 974

WILLOWBANKPLACE@ELIVIAHOMES.CO.UK



ELIVIA  
— HOMES —

Elivia Homes Central, Apollo House, Mercury Park,  
Wooburn Green, High Wycombe HP10 0HH

WWW.ELIVIAHOMES.CO.UK

