



Walnut Court
Kensington Green, W8

Walnut Court, Kensington Green, W8

3  2 

The Property

A fantastic 3-bedroom, 2-bathroom lateral apartment within the highly regarded Kensington Green development. This prized and very private address is gated and benefits from 24-hour security and concierge, award-winning landscaped gardens, secure underground parking, and a residents-only gymnasium.

The apartment itself is located on the fourth floor of Walnut Court with lift access. The generous layout is spread over 1185 sq.ft and the light-filled living room features 2 Juliet balconies and a large bay window. All 3 bedrooms are good sized doubles and master benefits from an ensuite bathroom.

Location

Kensington Green is enviably located just south of High Street Kensington, with a world class offering of restaurants, shops, entertainment and top schools on your doorstep. Hyde Park is within walking distance and the development is conveniently positioned for both access into the West End/City and back out to Heathrow Airport.

Price

£1,900,000

Tenure

Share of Freehold (991 years from Sept. 91)

Council

Royal Borough of Kensington & Chelsea (Band H)

Service Charge

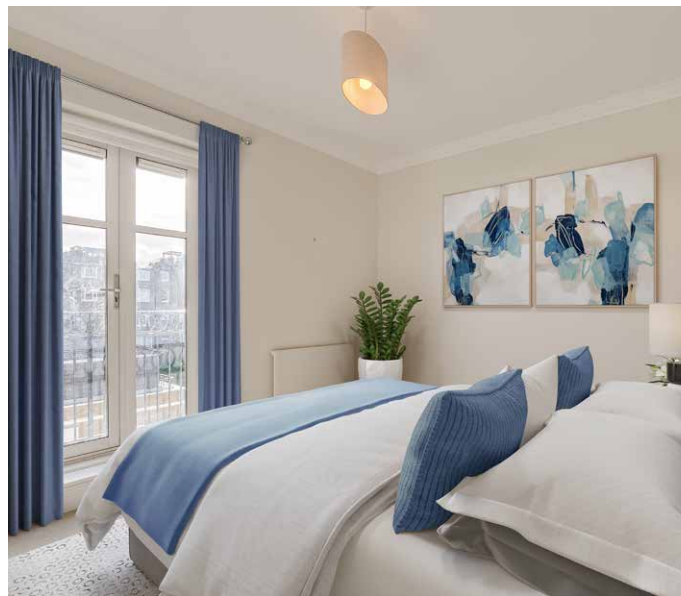
£10,373 per annum (2024)

Ground Rent

£202 per annum (2024)

Onsite Amenities

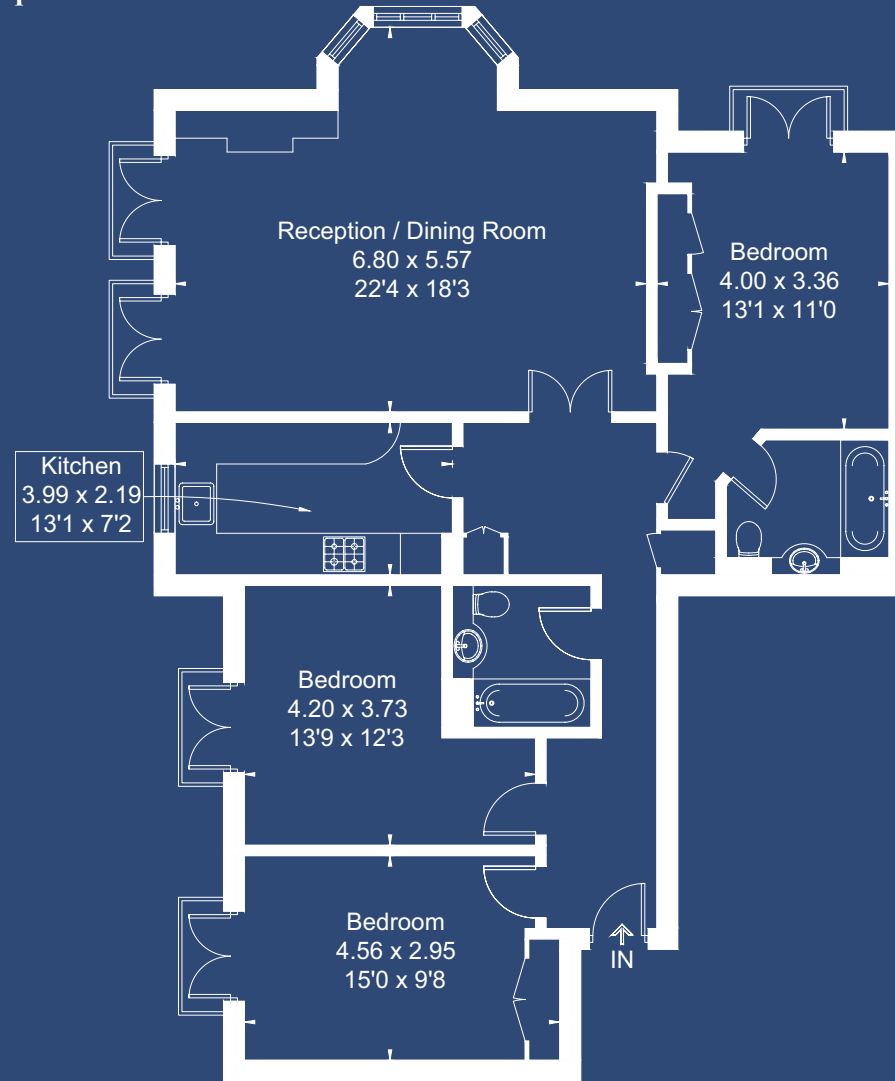
24 Hour Security & Concierge
Underground Car Parking Space
Private Landscaped Gardens
Gym (Residents Only)





Floorplan

Approximate Floor Area = 110.1 sq m / 1185 sq ft



Fourth Floor

Energy Efficiency Rating		
	Current	Potential
Very energy efficient - lower running costs		
(92+) A		
(81-91) B		
(69-80) C	76	81
(55-68) D		
(39-54) E		
(21-38) F		
(1-20) G		
Not energy efficient - higher running costs		
England & Wales	EU Directive 2002/91/EC	

Contact

T: +44 (0) 7867 526 071

E: hello@ridgestoneproperty.com