

## Black Isle View

SHARED  
EQUITY  
AVAILABLE



Somewhere to call home



# Black Isle View

# Westhill 2 bedroom home

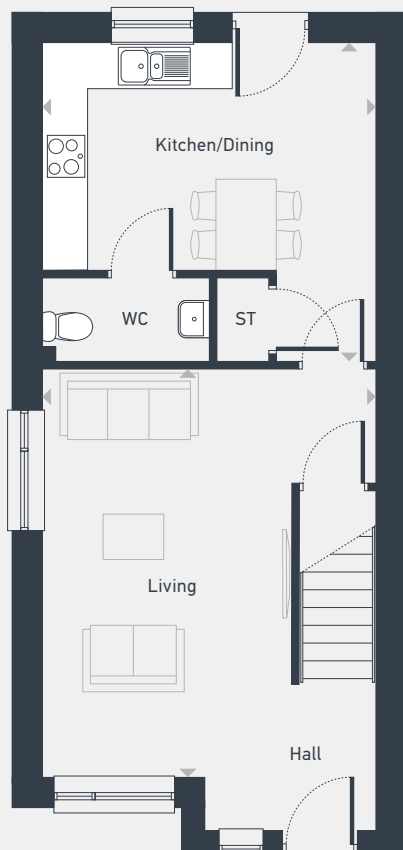


# Black Isle View

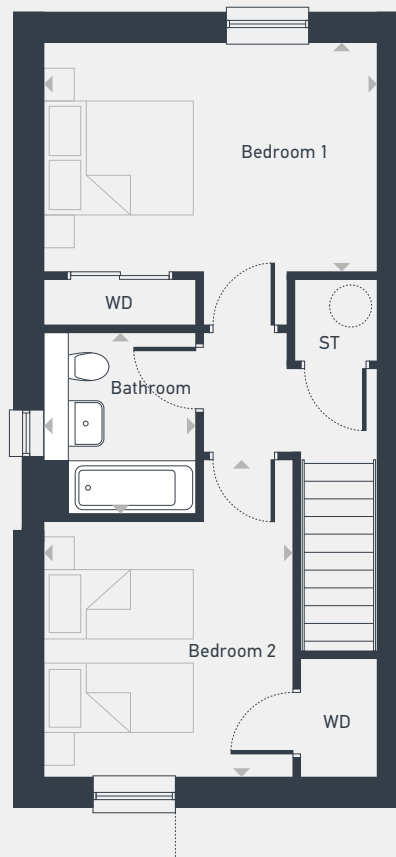
# Westhill 2 bedroom home

Plots as drawn: 81 and 85  
Plots handed: 80 and 84

87.20 sq m / 938.61 sq ft



GROUND FLOOR



FIRST FLOOR

DIMENSIONS	m	ft
Living	5.42m x 4.40m	17'9" x 14'5"
Kitchen/Dining	4.40m x 4.20m	14'5" x 13'9"

DIMENSIONS	m	ft
Bedroom 1	4.40 m x 3.75m	14'5" x 12'3"
Bedroom 2	4.20m x 3.29m	13'9" x 10'9"
Bathroom	2.40m x 2.00m	7'10" x 6'6"



07940 087 354 | blackisleviewsales@placesforpeople.co.uk  
Loch Avenue, Stratton, Inverness, IV2 7BX

**Please note:** All layouts and floor plans, configurations, maps and information are intended for guidance only and accuracy of this information cannot be relied upon by prospective purchasers who must make their own enquiries to satisfy themselves by inspection or otherwise as to the correct detail. Sizes and dimensions approximate and subject to change.

# Black Isle View

# Dalroy 3 bedroom home

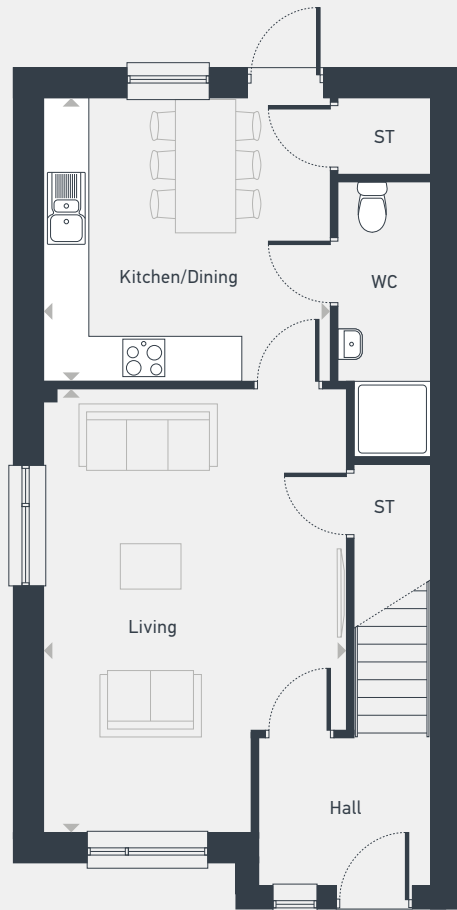


# Black Isle View

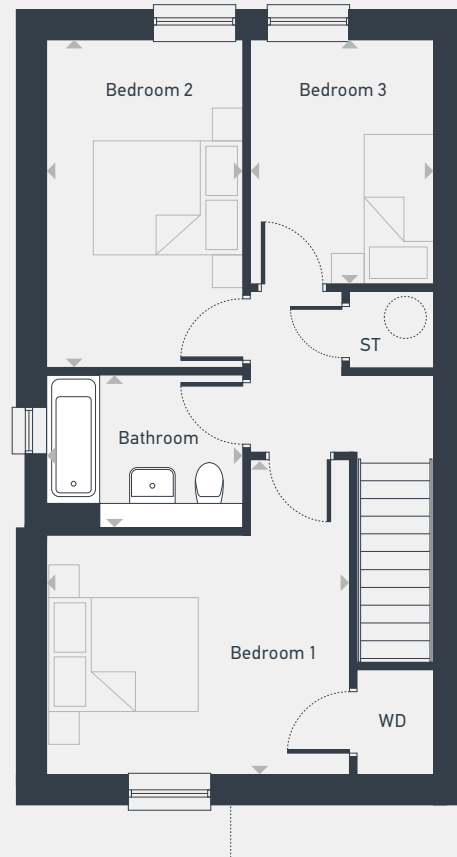
# Dalroy 3 bedroom home

Plots as drawn: 30 and 59  
Plots handed: 31 and 58

101 sq m / 1087.15 sq ft



GROUND FLOOR



FIRST FLOOR

DIMENSIONS	m	ft
Living	5.88m x 4.00m	19'3" x 13'5"
Kitchen/Dining	3.98m x 3.75m	13'0" x 12'3"

DIMENSIONS	m	ft
Bedroom 1	4.12m x 4.00 m	13'6" x 13'5"
Bedroom 2	4.32m x 2.60 m	14'2" x 8'6"
Bedroom 3	3.20m x 2.40 m	10'6" x 7'10"
Bathroom	2.60 m x 2.00 m	8'6" x 6'6"



07940 087 354 | blackisleviewsales@placesforpeople.co.uk  
Loch Avenue, Stratton, Inverness, IV2 7BX

**Please note:** All layouts and floor plans, configurations, maps and information are intended for guidance only and accuracy of this information cannot be relied upon by prospective purchasers who must make their own enquiries to satisfy themselves by inspection or otherwise as to the correct detail. Sizes and dimensions approximate and subject to change.



# Black Isle View

# Dalroy 3 bedroom home

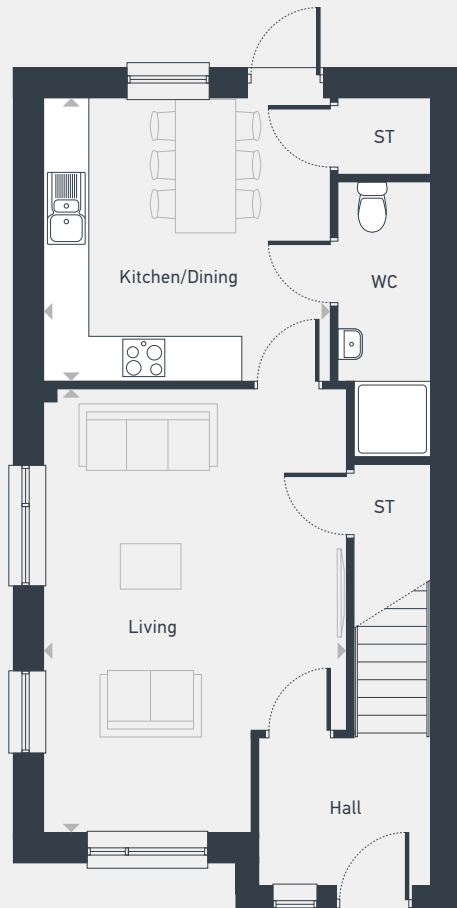


# Black Isle View

# Dalroy 3 bedroom home

Plots as drawn: 28, 60, 91, 93 and 97  
Plots handed: 29, 61, 92, 94 and 98

101 sq m / 1087.15 sq ft



GROUND FLOOR



FIRST FLOOR

DIMENSIONS	m	ft
Living	5.88m x 4.00m	19'3" x 13'5"
Kitchen/Dining	3.98m x 3.75m	13'0" x 12'3"

DIMENSIONS	m	ft
Bedroom 1	4.12m x 4.00 m	13'6" x 13'5"
Bedroom 2	4.32m x 2.60 m	14'2" x 8'6"
Bedroom 3	3.20m x 2.40 m	10'6" x 7'10"
Bathroom	2.60 m x 2.00 m	8'6" x 6'6"



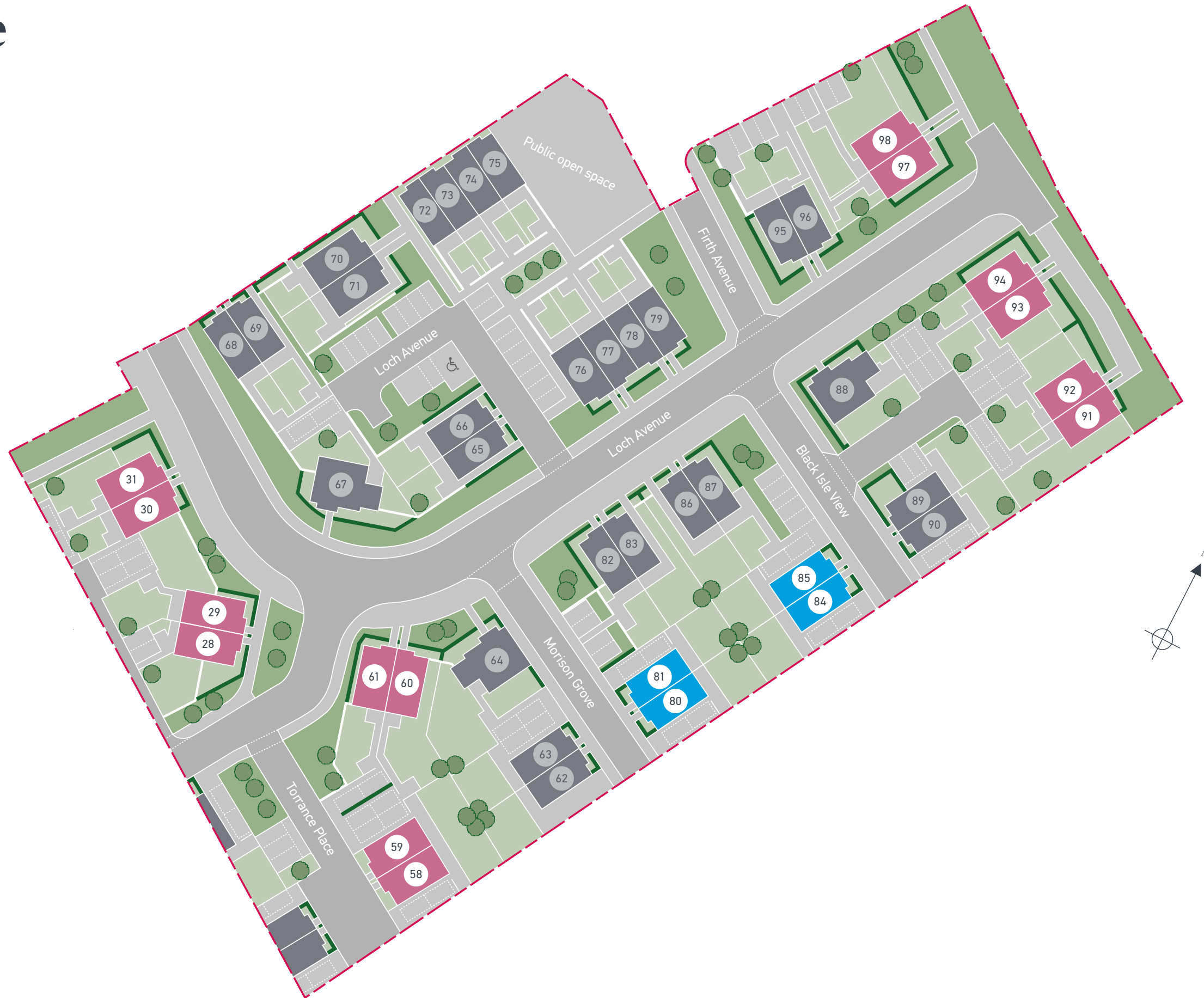
07940 087 354 | blackisleviewsales@placesforpeople.co.uk  
Loch Avenue, Stratton, Inverness, IV2 7BX

**Please note:** All layouts and floor plans, configurations, maps and information are intended for guidance only and accuracy of this information cannot be relied upon by prospective purchasers who must make their own enquiries to satisfy themselves by inspection or otherwise as to the correct detail. Sizes and dimensions approximate and subject to change.

# Black Isle View

## Site Plan

-  **Westhill**  
2 bedroom home
-  **Dalroy**  
3 bedroom home



07940 087 354 | [blackisleviewsales@placesforpeople.co.uk](mailto:blackisleviewsales@placesforpeople.co.uk)  
Loch Avenue, Stratton, Inverness, IV2 7BX

Please note: All CGIs, floor plans, configurations, maps and information are intended for guidance only and accuracy of this information cannot be relied upon by prospective purchasers who must make their own enquiries to satisfy themselves by inspection or otherwise as to the correct detail, including individual plot plans and colours. Sizes and dimensions approximate and subject to change.



### GENERAL

- Entrance door with timber frame.
- External stainless-steel light to front.
- Chrome door numbers.
- Grey PVCu windows and patio doors.
- Semi-solid doors painted in white satinwood finish with chrome handles.
- Skirting and architraves painted in white satinwood finish.
- Internal walls/ceilings painted in white emulsion.
- Built in wardrobes as per architect's plans.
- All white sockets and switches.
- Fibre telecom ONT.
- Pendant lighting as per plan.
- Low energy light at rear door.
- Air source heating.
- Front and back garden as per landscaped plan.
- Rotary drying pole.

### KITCHEN

- Stylish pre-selected kitchen by Riverside.
- Laminate worktops.
- Zanussi four ring ceramic hob and stainless-steel electric oven.
- Stainless steel cooker hood with splashback.
- Integrated fridge freezer.
- Stainless steel sink with Methven chrome tap.

### BATHROOM AND EN-SUITES

- Stylish Roca sanitary ware with Methven chrome taps.
- Stylish full height wall tiling around bath.
- Shower over bath with Methven thermostat and screen.
- Chrome towel rails.
- Shaver point.
- Semi flush ceiling light.



07940 087 354 | [blackisleviewsales@placesforpeople.co.uk](mailto:blackisleviewsales@placesforpeople.co.uk)  
Loch Avenue, Stratton, Inverness, IV2 7BX



07940 087 354 | [blackisleviewsales@placesforpeople.co.uk](mailto:blackisleviewsales@placesforpeople.co.uk)

Loch Avenue, Stratton, Inverness, IV2 7BX

Shared equity terms and conditions apply. Please talk to us for further details. Applications are subject to affordability and eligibility criteria.

---

**Places for People and any joint agents give notice that:** 1. The text, photographs, computer generated images and plans are for guidance only and are not necessarily comprehensive. 2. These particulars were prepared from preliminary plans and specifications before the completion of the properties. These particulars, together with any images that they contain, are intended only as a guide. They may have been changed during construction and final finishes could vary. This information is for guidance only and does not form any part of any contract or constitute a warranty. 3. There may be changes throughout the build process to specific brands, materials and appliances referred to in the specification. In such cases, an alternative of similar quality will be provided.