



5 Church Lane, Edith Weston,

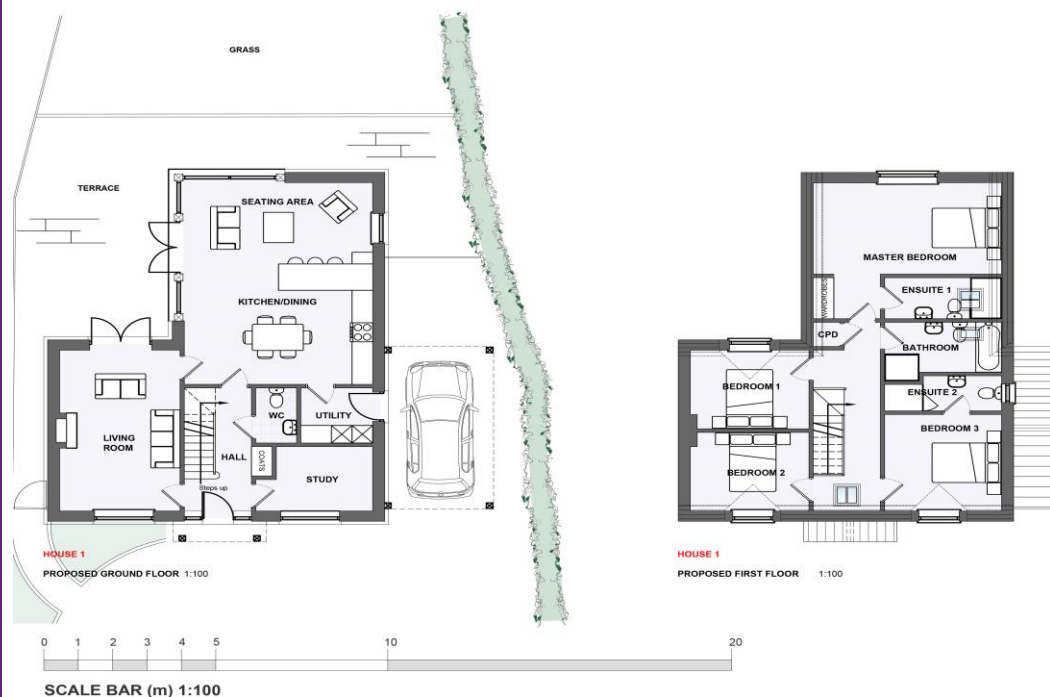
Fantastic Brand New Four Bedroom Stone Build in this
Quintessential English village

£695,000

5 Church Lane, Edith Weston, Rutland

Overview

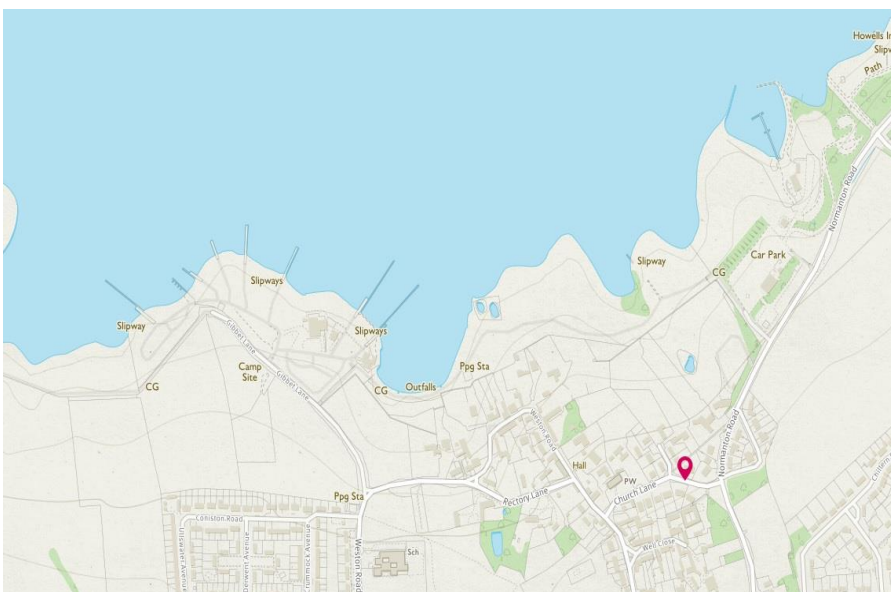
- Brand New Stone Built House
- 4 Bedrooms with 3 Bathrooms
- Sought After village Location
- Views of Rutland Water from First Floor
- Open plan kitchen/Dining/Family Rooms
- Sitting Room, Study
- Large Plot
- Car Port & Ample Driveway Parking
- Extremely High Spec Finish



Brand new four bedroom house set in the delightful Rutland village of Edith Weston and having views of Rutland Water from the first floor. Finished to a high standard throughout this stone property is both architecturally striking and cleverly designed to make the most of the space on offer. Sitting in a generous plot right in the heart of the village, within easy walking distance of Rutland Water the location really is idyllic. The house offers the best of modern design with an open plan kitchen/diner/family room looking out over the garden, yet still also featuring a large separate Living Room, Study, Utility Room and Cloakroom. Upstairs is a Master suite featuring its own dressing area and en-suite shower room. The remaining 3 double bedrooms are well served by another en-suite and the family bathroom. Outside the size of the rear garden is a surprise whilst to the front is a car port and ample parking set inside the gated entrance.



Edith Weston really is the quintessential English village and sits nestled on the southern shore of internationally famous Nature Reserve Rutland Water. The thriving community benefits from the many amenities on offer including a public house, village shop, primary school, sailing club and church. It offers a superb range of recreational facilities including nature walks, sailing, fishing, cycle routes and activity centres. There are many excellent golf courses in the area. The nearby market towns of Oakham, Uppingham and Stamford offer weekly street markets together with a good range of shopping and recreational facilities and each has a highly regarded public school.



Directions

From Stamford take the A606 towards Oakham. Follow this road for approximately 3 miles and just before the village of Empingham take the left fork towards Edith Weston. Follow the road along the side of Rutland Water for approximately 2 miles and on entering Edith Weston take the first right turn into Church Lane. The property can be found on the right hand side.

Thinking of Selling or Letting your home?

If you are considering selling or letting your home please contact us today for your no obligation free market appraisal.

Our dedicated and friendly team will assist you 6 days a week. Get in touch today!

Tel: +44 (0)1780 750000



Goodwin Property, 2-3 St John's Street, Stamford PE9 2DA

Phone: +44 (0)1780 750000



e-mail: enquiries@goodwinproperty.co.uk

IMPORTANT: we would like to inform prospective purchasers that these sales particulars have been prepared as a general guide only. A detailed survey has not been carried out, nor the services, appliances and fittings tested. Room sizes should not be relied upon for furnishing purposes and are approximate. If floor plans are included, they are for guidance only and illustration purposes only and may not be to scale. If there are any important matters likely to affect your decision to buy, please contact us before viewing the property.