



Brownlow Terrace

Stamford, PE9 2EH

1 Bedroom Ground Floor Flat - Brownlow Terrace sits in an elevated position on the apex of the corner between Wharf Road and St Leonards Street in the heart of Stamford Town centre and just moments from all the local shops, restaurants and amenities.

£715 PCM

Brownlow Terrace

Stamford, PE9 2EH



- Ground Floor Flat
- Kitchen
- Available March 2026
- 1 Double Bedroom with En Suite Shower Room
- Situated in the Heart of Stamford Town
- Good Condition Throughout
- Large Living Room
- Walking Distance to Local Shops & Amenities
- EPC Rating - E

Communal Entrance Hall

Entrance lobby

Living Room

Kitchen

Double Bedroom

En Suite Shower Room

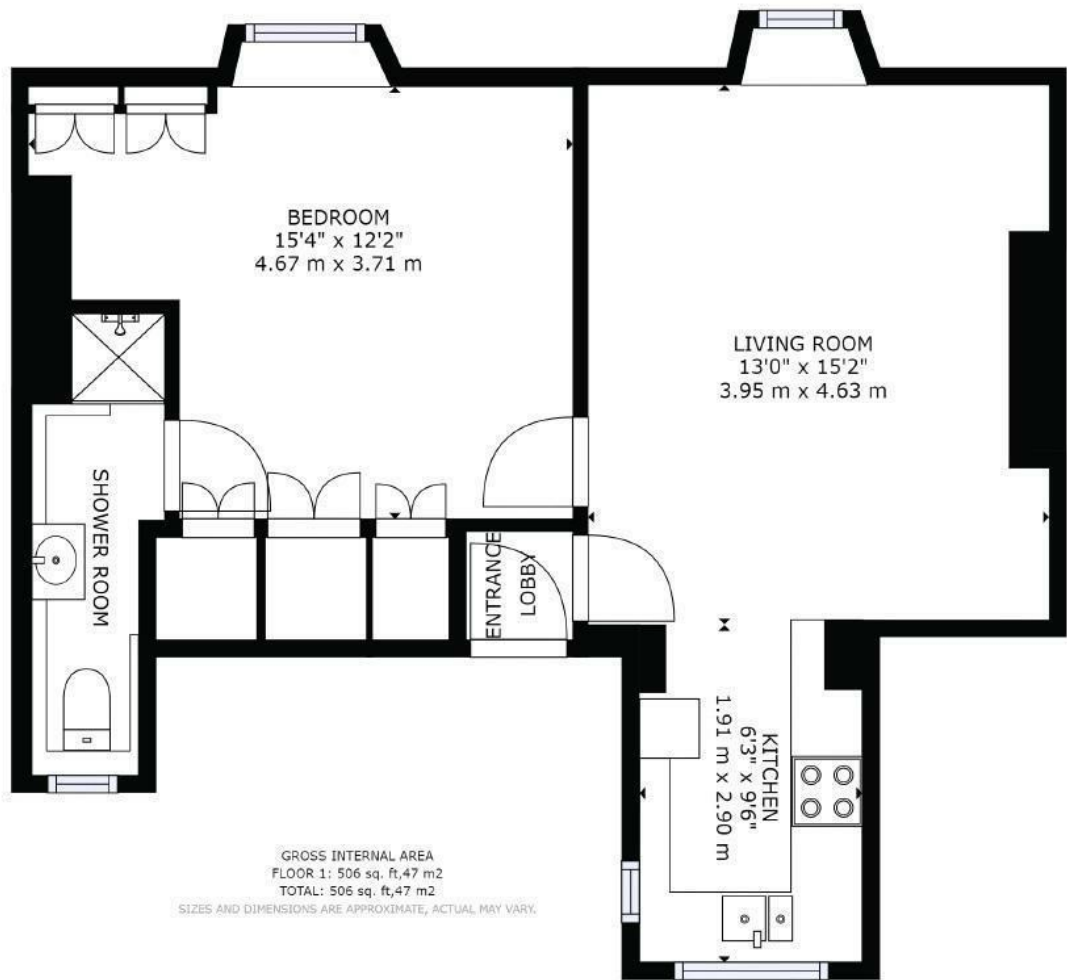


Directions

Please use Post Code PE9 2EH for Sat-Nav Assistance



Floor Plan



These particulars, whilst believed to be accurate are set out as a general outline only for guidance and do not constitute any part of an offer or contract. Intending purchasers should not rely on them as statements of representation of fact, but must satisfy themselves by inspection or otherwise as to their accuracy. No person in this firms employment has the authority to make or give any representation or warranty in respect of the property.

2-3 St Johns Street, Stamford, Lincs, PE9 2DA
Tel: 01780 750000 Email: info@goodwinproperty.co.uk goodwinproperty.co.uk

