

Ravel Close Stamford, PE9 1EZ

Spacious 3 storey, 3 bedroom townhouse with off street parking in a sought after part of Stamford close to local amenities . This property offers a modern kitchen and bathroom with a good sized garden.

£1,150 PCM

Ravel Close

Stamford, PE9 1EZ



- Stamford Location
- 3 Bedrooms
- Available from January 2026
- 3 Storey Townhouse
- 2 Bathrooms
- EPC Rating C
- Parking and Enclosed Garden
- Modern Interior
- Please see Keys Facts for Tenants for Material Information Disclosures

Entrance Hall

Kitchen

Living Room

13'6" x 12'2" (4.12 x 3.72)

First Floor Landing

Bedroom 2

13'6" x 8'5" (4.12 x 2.59)

Bedroom 3

6'5" x 8'0" (1.96 x 2.44)

Family Bathroom

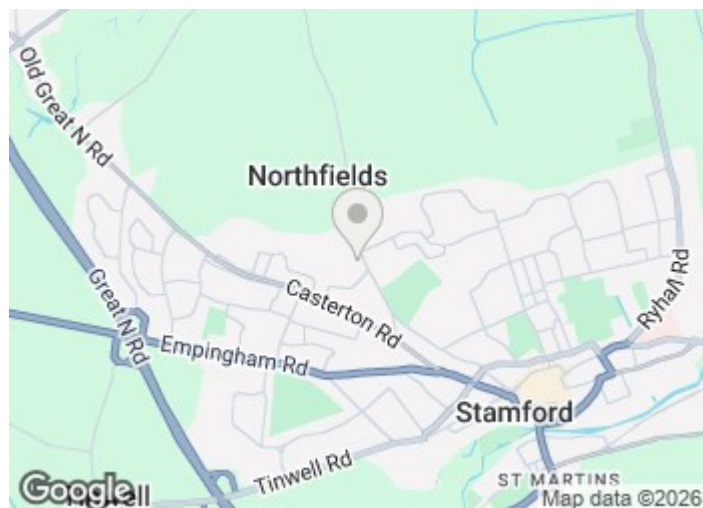
Master Bedroom

13'6" x 12'2" (4.12 x 3.73)

Ensuite Shower Room

Enclosed Rear Garden

Designated Off Street Parking

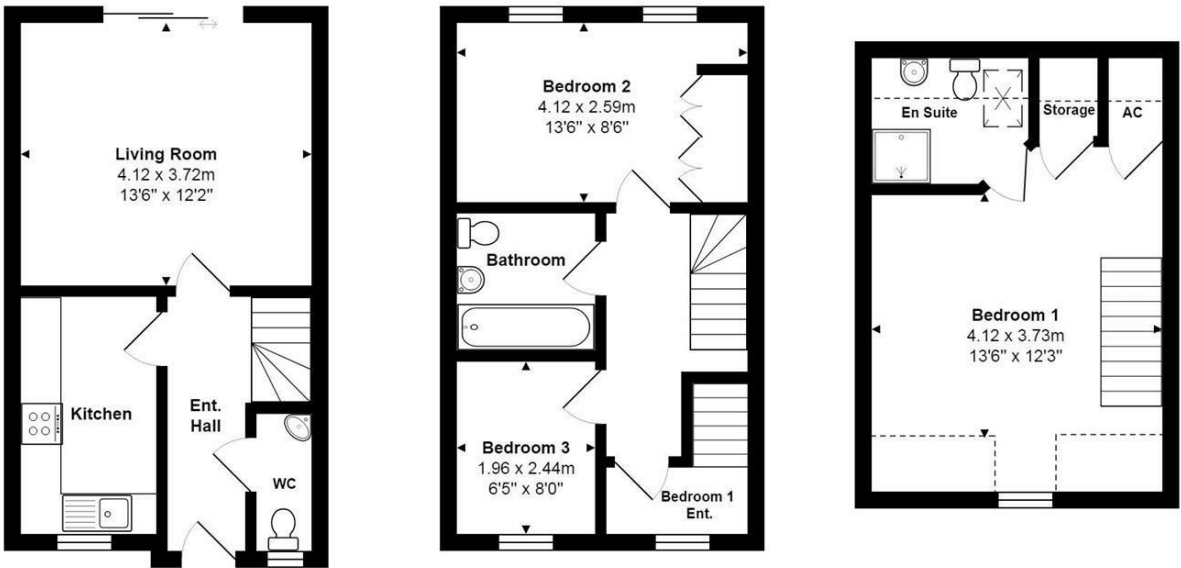


Directions

Please use postcode PE9 1EZ for Sat-Nav Guidance



Floor Plan



Ravel Close, Stamford

All measurements are approximate and for display purposes only

These particulars, whilst believed to be accurate are set out as a general outline only for guidance and do not constitute any part of an offer or contract. Intending purchasers should not rely on them as statements of representation of fact, but must satisfy themselves by inspection or otherwise as to their accuracy. No person in this firms employment has the authority to make or give any representation or warranty in respect of the property.

2-3 St Johns Street, Stamford, Lincs, PE9 2DA
Tel: 01780 750000 Email: info@goodwinproperty.co.uk goodwinproperty.co.uk

