



Carisbrooke Grove

Stamford, PE9 2GF

Modern three-bedroom end terrace in a popular residential area off Empingham Road. Well-presented throughout with neutral décor, lounge diner, modern kitchen, downstairs cloakroom, enclosed garden, garage, and parking for two cars. EPC Rating D

£1,250 PCM

Carisbrooke Grove

Stamford, PE9 2GF



- 3 Bed End of Terrace
- Neutral Decor and Brand New Carpets (Downstairs)
- EPC Rating - D
- Driveway for 2 Vehicles
- Enclosed Rear Garden
- Please see Keys Facts for Tenants for Material Information Disclosures
- Single Garage with Personnel Door to the Garden
- Bathroom with Shower over the Bath

Entrance Hall

Cloakroom

Kitchen

Living Room

14'9" x 14'5" (4.50 x 4.39)

Landing

Bedroom 1

12'9" x 8'2" (3.89 x 2.49)

Bedroom 2

6'11" x 9'10" (2.11 x 3.00)

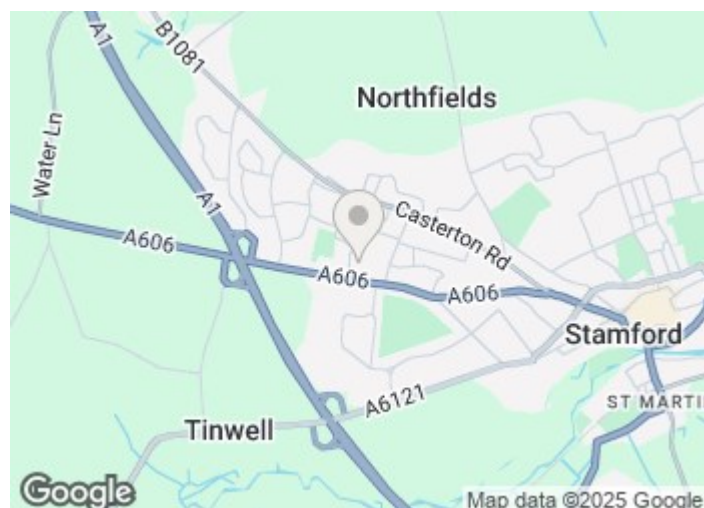
Bedroom 3

7'3" x 6'7" (2.21 x 2.01)

Enclosed Rear Garden

Single Garage

Parking For 2 Vehicles

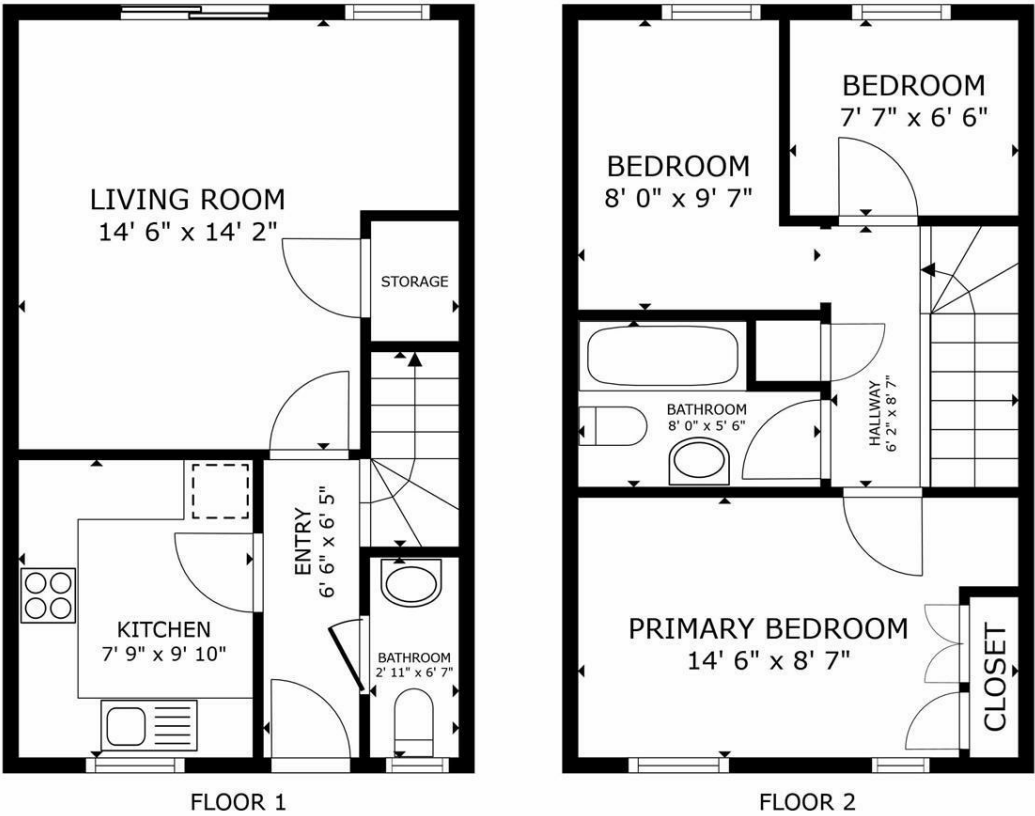


Directions

Please use post code PE9 2GF for Sat-Nav assistance



Floor Plan



GROSS INTERNAL AREA
FLOOR 1 353 sq.ft. FLOOR 2 353 sq.ft.
TOTAL : 707 sq.ft.
SIZES AND DIMENSIONS ARE APPROXIMATE, ACTUAL MAY VARY.



These particulars, whilst believed to be accurate are set out as a general outline only for guidance and do not constitute any part of an offer or contract. Intending purchasers should not rely on them as statements of representation of fact, but must satisfy themselves by inspection or otherwise as to their accuracy. No person in this firms employment has the authority to make or give any representation or warranty in respect of the property.

2-3 St Johns Street, Stamford, Lincs, PE9 2DA
Tel: 01780 750000 Email: info@goodwinproperty.co.uk goodwinproperty.co.uk

